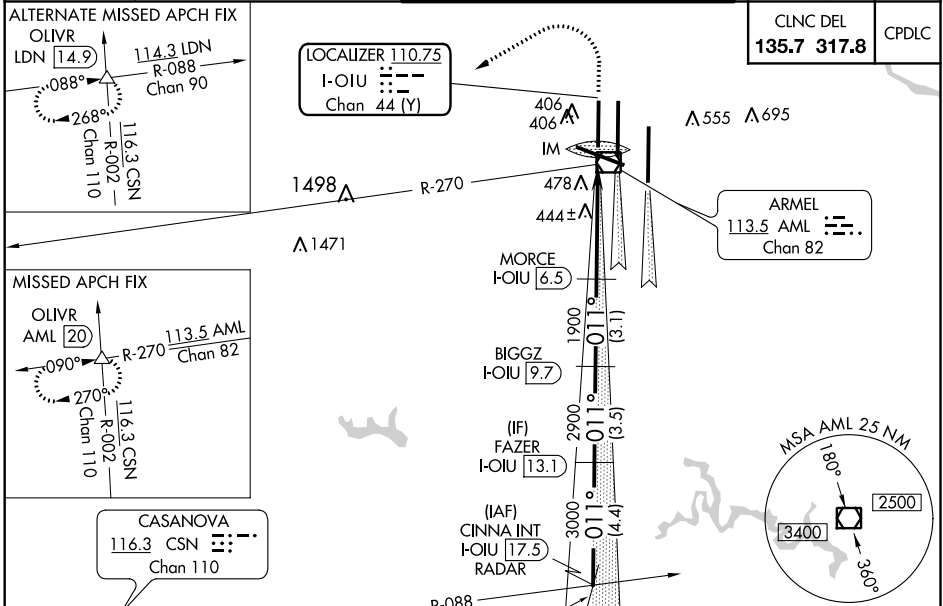


LOC/DME I-OIU <b>110.75</b> Chan <b>44</b> (Y)	APP CRS <b>011°</b>	Rwy Idg <b>9400</b> TDZE <b>296</b> Apt Elev <b>312</b>
--	------------------------	--

# ILS RWY 1L (CAT II & III)

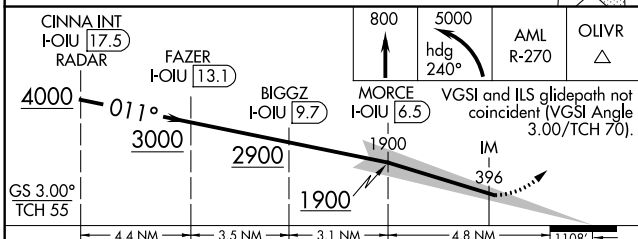
## WASHINGTON DULLES INTL (IAD)

<b>⚠</b> Simultaneous approach authorized with ILS or LOC/DME Rwy 1C, ILS Rwy 1C (Cat III), RNAV (GPS) Y Rwy 1C, ILS or LOC Rwy 1R, ILS Rwy 1R (Cat II), ILS Rwy 1R (Cat III), RNAV (GPS) Y Rwy 1R.	ALSF-2 	<b>MISSED APPROACH:</b> Climb to 800 then climbing left turn to 5000 via heading 240° and AML VOR/DME R-270 to OLVR INT/AML 20 DME and hold, continue climb-in-hold to 5000.



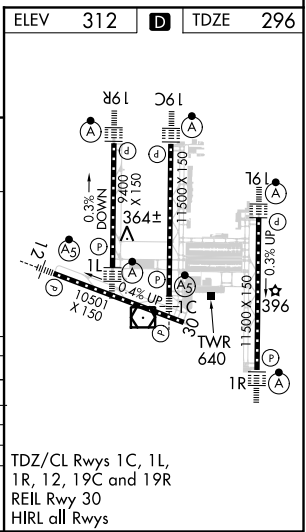
ELEV 312	<b>D</b>	TDZE 296
----------	----------	----------

### DME or RADAR REQUIRED



CATEGORY	A	B	C	D
S-ILS 1L	CAT II RA 97/12		100 DA 396	
S-ILS 1L	CAT IIIa		RVR 07	
S-ILS 1L	CAT IIIb		RVR 06	
S-ILS 1L	CAT IIIc		NA	

## CATEGORY II & III ILS - SPECIAL AIRCREW & AIRCRAFT CERTIFICATION REQUIRED



## WASHINGTON DULLES INTL (IAD)

# ILS RWY 1L (CAT II & III)

NE-3, 25 MAR 2021 to 22 APR 2021

NE-3, 25 MAR 2021 to 22 APR 2021