

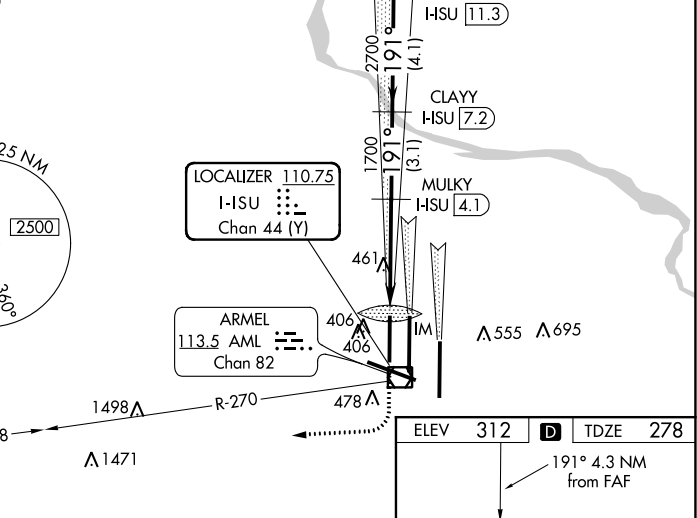
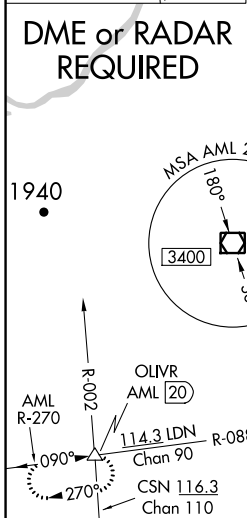
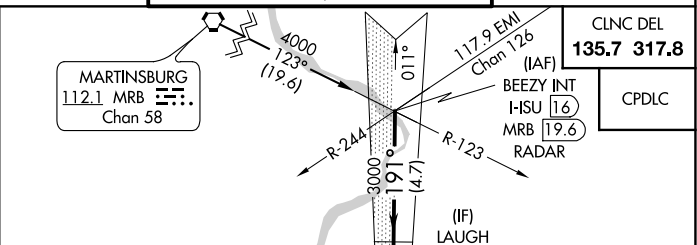
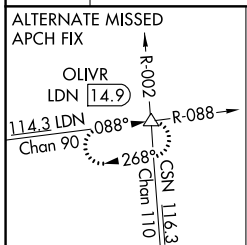
LOC/DME I-HSU 110.75 Chan 44 (Y)	APP CRS 191°	Rwy ldg 9400 TDZE 278 Apt Elev 312
--	------------------------	---

ILS or LOC/DME RWY 19R

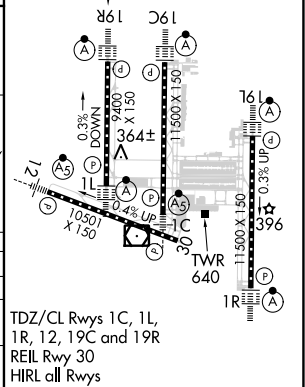
WASHINGTON DULLES INTL (IAD)

Simultaneous approach authorized with ILS or LOC/DME ALSF-2 MISSED APPROACH: Climb to 800 then climbing right turn to 5000 via AML VOR/DME R-270 to OLIVR INT/ Rwy 19C, ILS Rwy 19C (Cat II), ILS Rwy 19C (Cat III), Rwy 19L.

D-ATIS 134.85	POTOMAC APP CON 120.45 306.925 (241°-330°) 128.525 306.925 (091°-240°) 126.1 338.25 (331°-090°)	DULLES TOWER 120.1 317.8 (Rwy 1R/19L) 120.25 348.6 (Rwy 1C/19C) 134.425 348.6 (Rwys 1L/19R and 12/30)	GND CON 121.9 317.8 (EAST) 121.625 348.6 (WEST)
-------------------------	---	---	---



BEEZY INT I-HSU 116 RADAR	VGS1 and ILS glidepath not coincident (VGS1 Angle 3.00/TCH 70).			
4000	3000	2700	1700	800
191°				5000
GS 3.00° TCH 55				AML R-270
	4.7 NM	4.1 NM	3.1 NM	1.1 NM
CATEGORY	A	B	C	D
S-ILS 19R	478/18 200 (200-½)			
S-LOC 19R	720/24 442 (500-½)	720/40 442 (500-¾)	720/50 442 (500-1)	
CIRCLING	940-1 628 (700-1)	940-1¾ 628 (700-1¾)	940-2 628 (700-2)	



NE-3, 25 MAR 2021 to 22 APR 2021

NE-3, 25 MAR 2021 to 22 APR 2021