


LOC I-OSZ 111.3	APP CRS 011°	Rwy ldg TDZE Apt Elev	11500 286 313
---------------------------	------------------------	-----------------------------	--

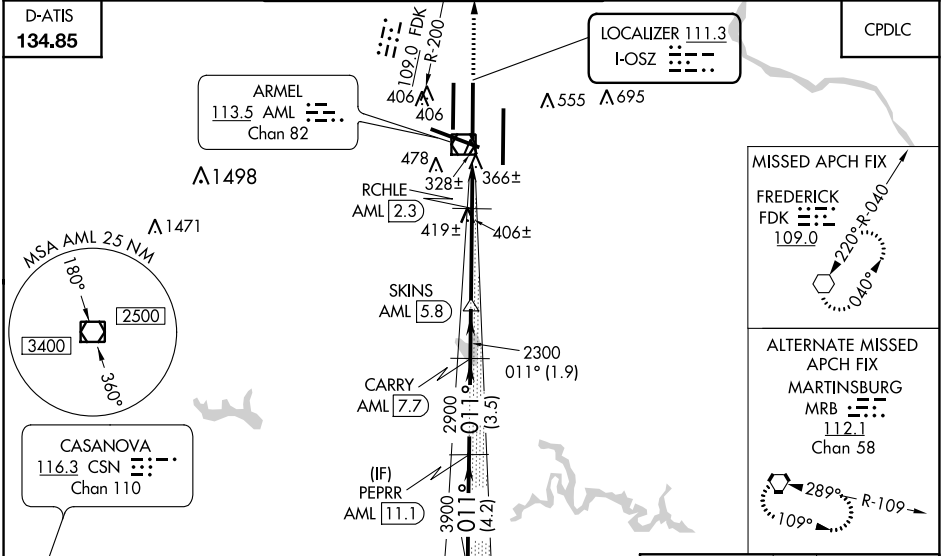
ILS or LOC/DME RWY 1C

WASHINGTON DULLES INTL (IAD)

⚠ DME from AML VOR/DME. Simultaneous reception of I-OSZ and AML DME required. Simultaneous approach authorized with ILS or LOC/DME Rwy 1L, ILS Rwy 1L (Cat II), ILS Rwy 1L (Cat III), ILS or LOC Rwy 1R, ILS Rwy 1R (Cat II), ILS Rwy 1R (Cat III). DME required. For Inoperative MALSRL, increase S-LOC Cats C/D visibility to RVR 5000. **1800 RVR authorized with the use of FD or AP or HUD to DA.

MALSRL  **MISSED APPROACH:** Climb to 3000 on heading 011° and FDK VOR R-200 to FDK VOR and hold.

POTOMAC APP CON 120.45 306.925 (241°-330°) 128.525 306.925 (091°-240°) 126.1 338.25 (331°-090°)	DULLES TOWER 120.1 317.8 (Rwy 1R/19L) 120.25 348.6 (Rwy 1C/19C) 134.425 348.6 (Rwys 1L/19R and 12/30)	GND CON 121.9 317.8 (EAST) 121.625 348.6 (WEST)	CLNC DEL 135.7 317.8
---	---	---	--------------------------------

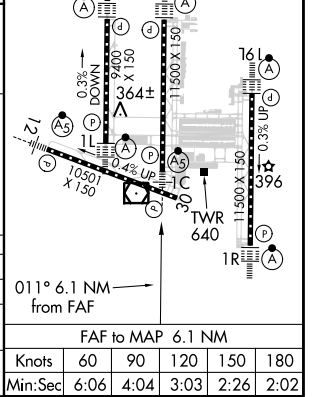
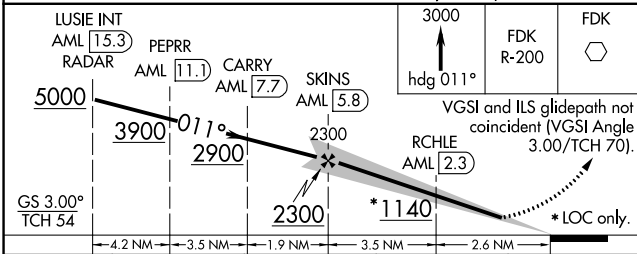


NE-3, 25 MAR 2021 to 22 APR 2021

NE-3, 25 MAR 2021 to 22 APR 2021

LUSIE INT AML [15.3] PEPRR AML [11.1] CARRY AML [7.7] SKINS AML [5.8]	3000	FDK
5000	hdg 011°	FDK R-200
3900 011° 2900	VGSI and ILS glidepath not coincident (VGSI Angle 3.00/TCH 70).	
GS 3.00° TCH 54	RCHLE AML [2.3]	
-4.2 NM	-3.5 NM	-1.9 NM
-3.5 NM	-1.9 NM	3.5 NM
		2.6 NM

ELEV 313	D	TDZE 286
TDZ/CL Rwys 1C, 1L, 1R, 12, 19C and 19R		
REIL Rwy 30		
HIRL all Rwys		



CATEGORY	A	B	C	D
S-ILS 1C		** 486/24	200 (200-½)	
S-LOC 1C		620/24	334 (400-½)	620/40 334 (400-¾)
CIRCLING	940-1	627 (700-1)	940-1¾ 627 (700-1¾)	940-2 627 (700-2)