

JDUBB FOUR DEPARTURE (RNAV)

**TOP ALTITUDE:
3000**

D-ATIS
134.85
CLNC DEL
135.7 317.8
CPDLC
GND CON
121.9 317.8 (EAST)
121.625 348.6 (WEST)
DULLES TOWER
120.1 317.8 (Rwy 1R/19L)
120.25 348.6 (Rwy 1C/19C)
134.425 348.6 (Rwys 1L/19R, 12/30)
POTOMAC DEP CON
126.65 350.2



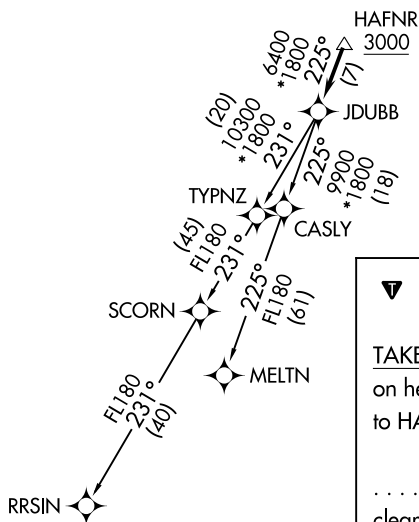
TAKEOFF MINIMUMS:

Rwys 1L/C/R, 19L/C/R, 30:
Standard with minimum climb
of 500' per NM to 820.

- NOTE: RNAV 1.
- NOTE: RADAR required.
- NOTE: DME/DME/IRU or GPS required.
- NOTE: Turbo-jets only.

NE-3, 25 MAR 2021 to 22 APR 2021

NE-3, 25 MAR 2021 to 22 APR 2021



NOTE: Chart not to scale.

▼ DEPARTURE ROUTE DESCRIPTION

TAKEOFF RUNWAY 1L/C/R, 19L/C/R, 30: Climb on heading assigned by ATC, expect RADAR vectors to HAFNR, then on track 225° to JDUBB, thence. . . .

 . . . on assigned transition. Maintain 3000. Expect clearance to filed altitude within 10 minutes after departure.

MELTN TRANSITION (JDUBB4.MELTN)
RRSIN TRANSITION (JDUBB4.RRSIN)