

| | | | |
|--|------------------------|---|-------------|
| WAAS CH 86709 W19D | APP CRS 191° | Rwy Idg TDZE 278 Apt Elev 312 | 9400 |
|--|------------------------|---|-------------|

RNAV (GPS) RWY 19R

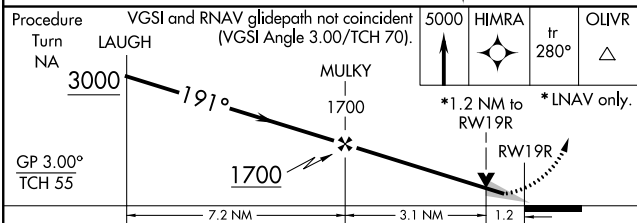
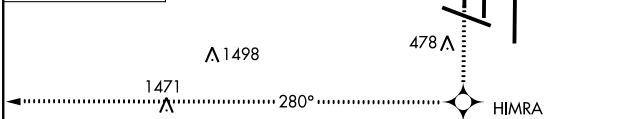
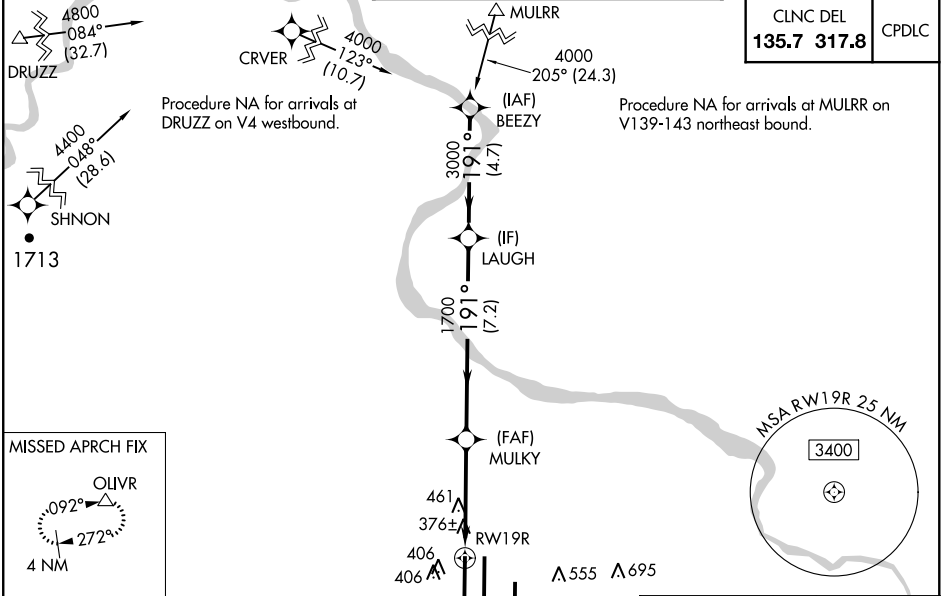
WASHINGTON DULLES INTL (IAD)

▼ For uncompensated Baro-VNAV systems, LNAV/VNAV NA below -15°C (5°F) or above 48°C (118°F). DME/DME RNP -0.3 NA. Simultaneous approach authorized with ILS or LOC Rwy 19L, ILS Rwy 19L (Cat II). LNAV procedure NA during simultaneous operations. Use of FD or AP providing RNAV track guidance required during simultaneous operations.

ALSF-2

MISSED APPROACH: Climb to 5000 direct HIMRA and on 280° track to OLIVR and hold, continue climb-in-hold to 5000.

| | | | |
|-------------------------|--|---|---|
| D-ATIS 134.85 | POTOMAC APP CON 120.45 306.925 (241°-330°) | DULLES TOWER 120.1 317.8 (Rwy 1R/19L) 120.25 348.6 (Rwy 1C/19C) | GND CON 121.9 317.8 (EAST) 121.625 348.6 (WEST) |
| | 126.1 338.25 (331°-090°) | 134.425 348.6 (Rwy 1L/19R and 12/30) | |
| | | | |



| | | | | |
|------|-----|----------|------|-----|
| ELEV | 312 | D | TDZE | 278 |
|------|-----|----------|------|-----|

| CATEGORY | A | B | C | D |
|--------------|--------|---------------|------------------------------|-----------------------|
| LPV DA | | 478/18 | 200 (200-1/2) | |
| LNAV/VNAV DA | | 714/50 | 436 (500-1) | |
| LNAV MDA | 720/24 | 442 (500-1/2) | 720/40 442 (500-3/4) | 720/50 442 (500-1) |
| CIRCLING | 940-1 | 628 (700-1) | 940-1 3/4 628 (700-1 3/4) | 940-2 628 (700-2) |

NE-3, 25 MAR 2021 to 22 APR 2021

NE-3, 25 MAR 2021 to 22 APR 2021