

WAAS CH 58105 W19A	APP CRS 191°	Rwy Idg 11500 TDZE 302 Apt Elev 312
--	------------------------	--

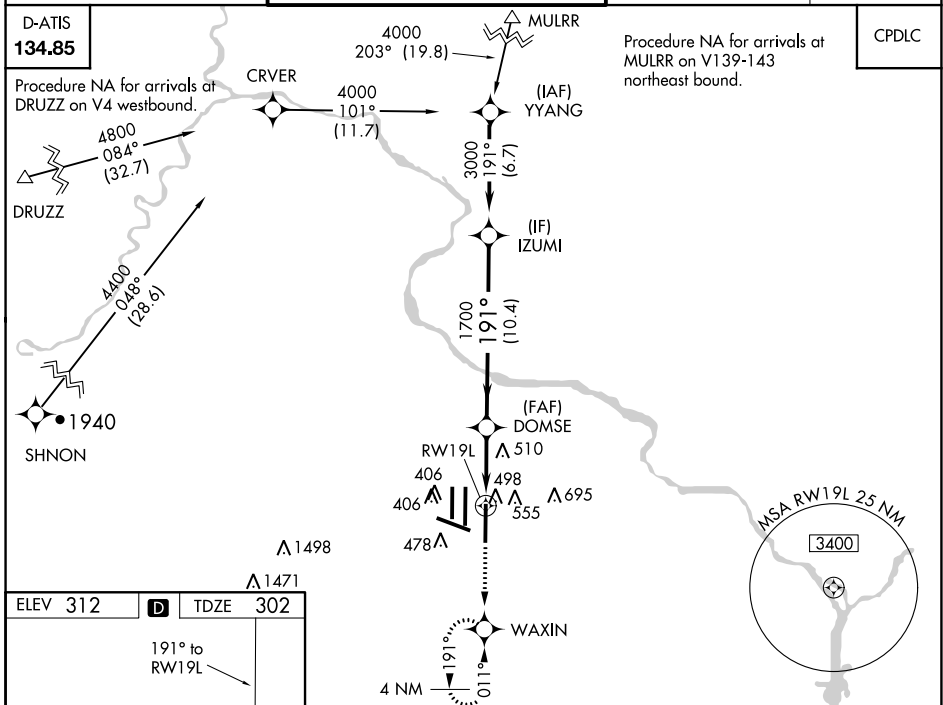
RNAV (GPS) Y RWY 19L

WASHINGTON DULLES INTL (IAD)

▼ For uncompensated Baro-VNAV systems, LNAV/VNAV NA below -15°C (5°F) or above 48°C (118°F). DME/DME RNP-0.3 NA. Simultaneous approach authorized with ILS or LOC/DME Rwy 19R, ILS Rwy 19R (Cat II), ILS Rwy 19R (Cat III). LNAV procedure NA during simultaneous operations. Use of FD or AP providing RNAV track guidance required during simultaneous operations. **RVR 1800 authorized with use of FD or AP or HUD to DA.

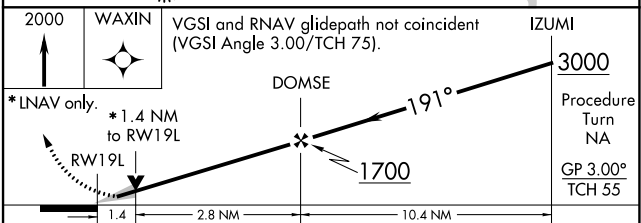
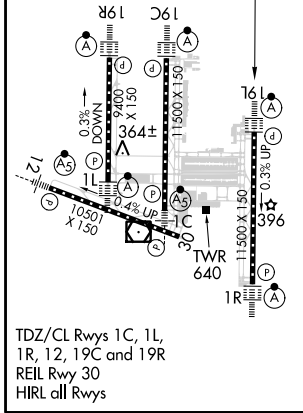
ALSIF-2 	MISSED APPROACH: Climb to 2000 direct WAXIN and hold.
-------------	---

POTOMAC APP CON 120.45 306.925 (241°-330°) 128.525 306.925 (091°-240°) 126.1 338.25 (331°-090°)	DULLES TOWER 120.1 317.8 (Rwy 1R/19L) 120.25 348.6 (Rwy 1C/19C) 134.425 348.6 (Rwys 1L/19R and 12/30)	GND CON 121.9 317.8 (EAST) 121.625 348.6 (WEST)	CLNC DEL 135.7 317.8
---	---	---	--------------------------------



NE-3, 25 MAR 2021 to 22 APR 2021

NE-3, 25 MAR 2021 to 22 APR 2021



CATEGORY	A	B	C	D
LPV DA**	502/24 200 (200-½)			
LNAV/VNAV DA	829/60 527 (600-1¼)			
LNAV MDA	820/24	518 (600-½)	820/50 518 (600-1)	820/60 518 (600-1¼)
CIRCLING	940-1	628 (700-1)	940-1¾ 628 (700-1¾)	940-2 628 (700-2)