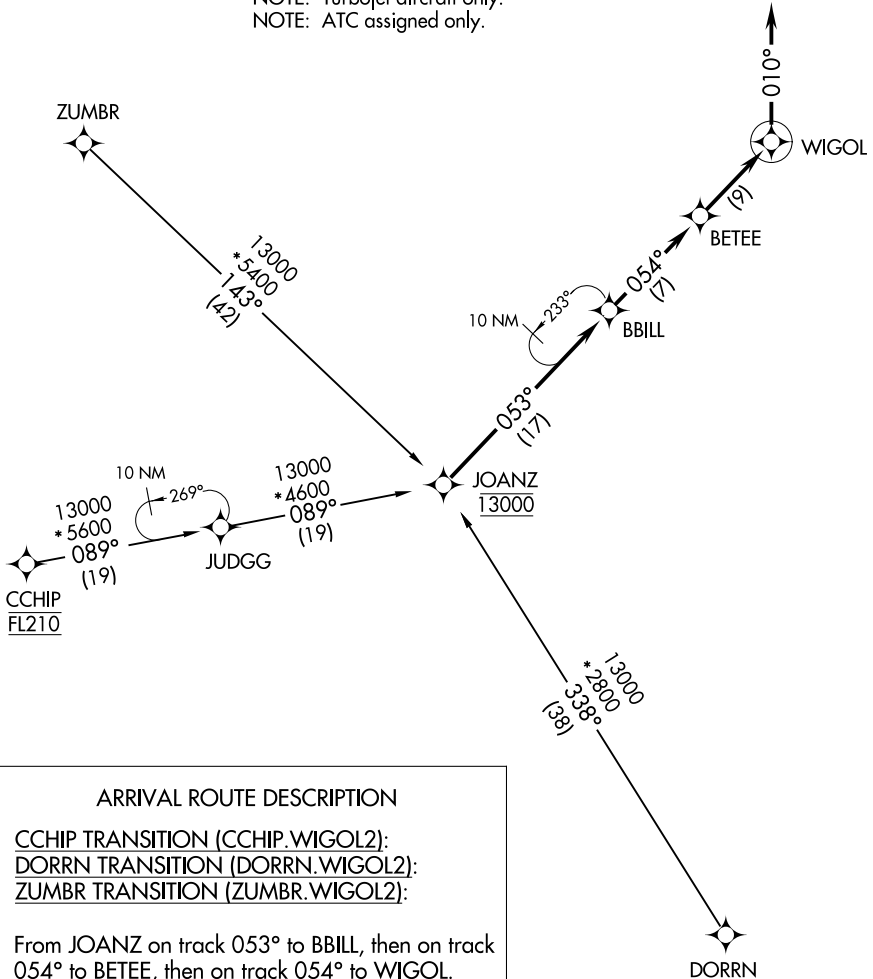


WIGOL TWO ARRIVAL (RNAV)

POTOMAC APP CON
132.85 323.125
D-ATIS
134.85

NOTE: RADAR required.
NOTE: RNAV 1.
NOTE: DME/DME/IRU or GPS required.
NOTE: Turbojet aircraft only.
NOTE: ATC assigned only.



ARRIVAL ROUTE DESCRIPTION

CCHIP TRANSITION (CCHIP.WIGOL2):
DORRN TRANSITION (DORRN.WIGOL2):
ZUMBR TRANSITION (ZUMBR.WIGOL2):

From JOANZ on track 053° to BBILL, then on track 054° to BETEE, then on track 054° to WIGOL.

Landing Rwys 1L/C/R, 19L/C/R, 30: From WIGOL on heading 010°. Expect radar vectors to final approach course.

NOTE: Chart not to scale.

WIGOL TWO ARRIVAL (RNAV)

NE-3, 25 MAR 2021 to 22 APR 2021

NE-3, 25 MAR 2021 to 22 APR 2021