

LOC/DME I-TOA 111.9 Chan 56	APP CRS 294°	Rwy Idg 4461 TDZE 97 Apt Elev 103
---	------------------------	--

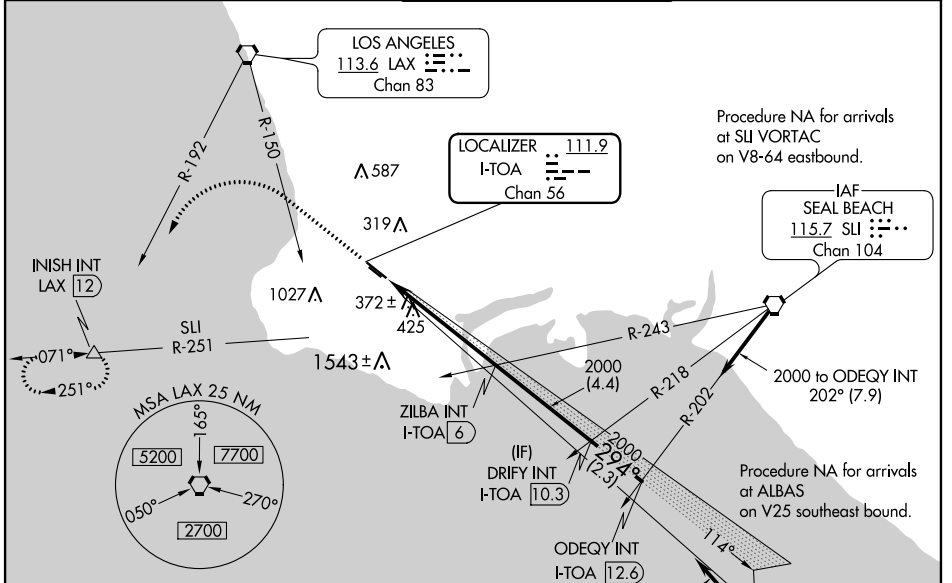
ILS or LOC RWY 29R

ZAMPERINI FIELD (TOA)

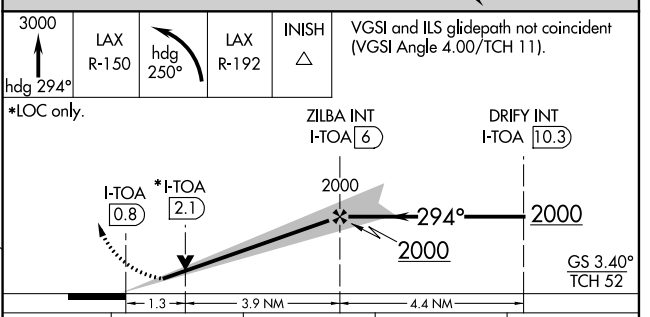
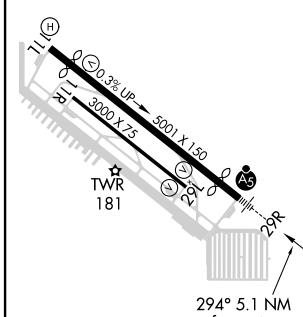
⚠ Circling NA SW of Rwy 11R-29L. When local altimeter setting not received, except for operators with approved weather reporting service, use Los Angeles Intl altimeter setting and increase all DA to 405 feet and increase all MDA 40 feet; Increase S-LOC 29R and Circling Cat C visibility 1/8 SM. For inop ALS, increase S-ILS 29R all Cats visibility to 3/8 SM. For inop ALS when using Los Angeles Intl altimeter setting increase S-ILS 29R all Cats visibility to 1/8 SM. VDP NA when using Los Angeles altimeter setting.

MALS
MISSED APPROACH: Climb to 3000 on heading 294° to cross LAX VORTAC R-150 then climbing left turn on heading 250° and on LAX VORTAC R-192 to INISH INT/LAX 12 DME and hold.

ATIS 125.6	SOCAL APP CON 124.3 363.2 (Rwys 11L, 11R) 127.2 269.6 (Rwys 29L, 29R)	TORRANCE TOWER* 133.075 257.8 (NORTH) 124.0 (CTAF) 257.8 (SOUTH)	GND CON 120.9	UNICOM 122.95
----------------------	---	---	-------------------------	-------------------------



ELEV 103	TDZE 97
----------	---------



CATEGORY	A	B	C	D
S-ILS 29R	381-1/2		284 (300-1/2)	NA
S-LOC 29R	640-1/2	543 (600-1/2)	640-1 1/8 543 (600-1 1/8)	NA
C CIRCLING	640-1 537 (600-1)	680-1 577 (600-1)	680-1 3/8 577 (600-1 3/8)	NA

SW-3, 25 MAR 2021 to 22 APR 2021

SW-3, 25 MAR 2021 to 22 APR 2021