

VORTAC LAX <b>113.6</b> Chan <b>83</b>	APP CRS <b>135°</b>	Rwy ldg TDZE <b>96</b> Apt Elev <b>103</b>
--	------------------------	--

# VOR RWY 11L

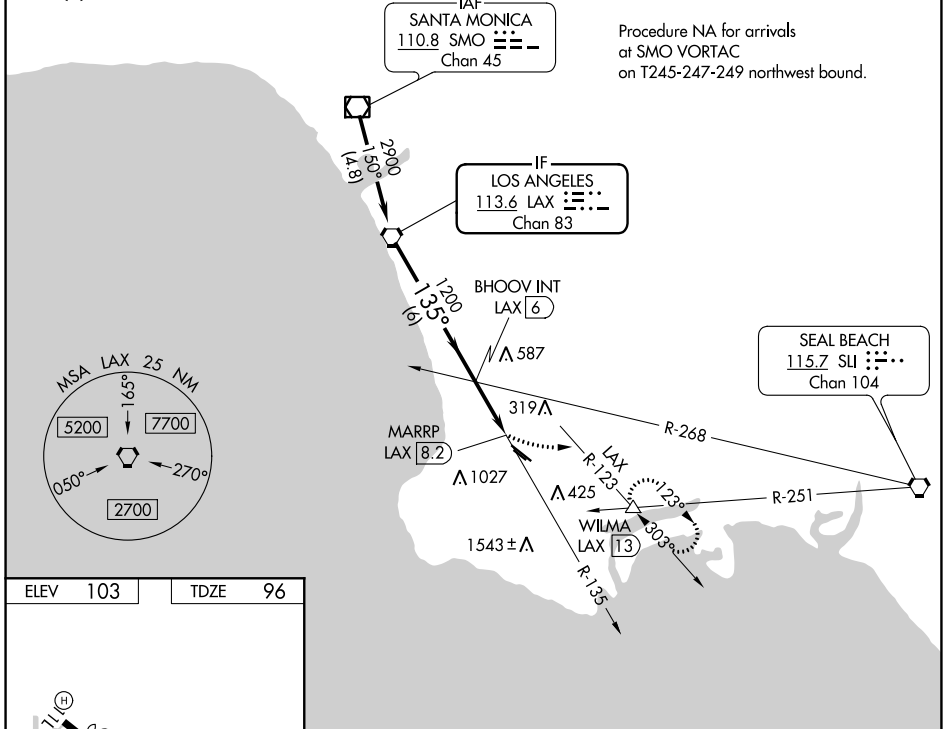
ZAMPERINI FIELD (TOA)

**⚠** Circling NA southwest of Rwy 11R-29L. When local altimeter setting not received, except for operators with approved weather reporting service, use Los Angeles Intl altimeter setting and increase all MDA 40 feet and increase S-11L Cat A visibility and Circling Cat C visibility ¼ SM. Rwy 11L helicopter visibility reduction below ¾ SM NA.

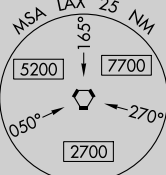
**MISSED APPROACH:** Climbing left turn to 3000 on heading 075° and on LAX VORTAC R-123 to WILMA INT/LAX 13 DME and hold, continue climb-in-hold to 3000.

ATIS <b>125.6</b>	SOCAL APP CON <b>124.3 363.2</b> (Rwys 11L, 11R) <b>127.2 269.6</b> (Rwys 29L, 29R)	TORRANCE TOWER* <b>133.075 257.8</b> (NORTH) <b>124.0</b> (CTAF) <b>257.8</b> (SOUTH)	GND CON <b>120.9</b>	UNICOM <b>122.95</b>
----------------------	---	---	-------------------------	-------------------------

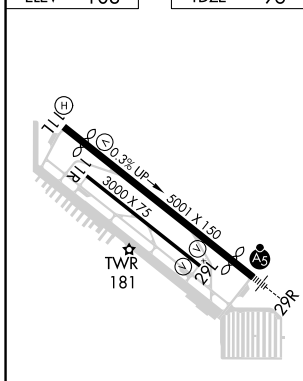
⚠ 2908



Procedure NA for arrivals at SMO VORTAC on T245-247-249 northwest bound.

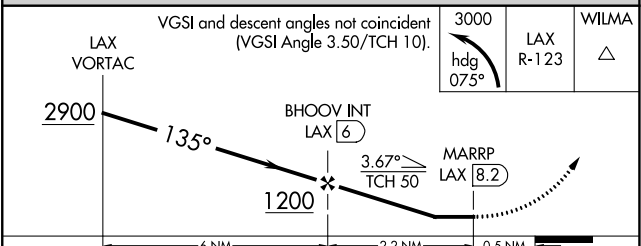


ELEV <b>103</b>	TDZE <b>96</b>
-----------------	----------------



REIL Rwy 29L  
MIRL Rwys 11L-29R and 11R-29L  
FAF to MAP 2.2 NM

Knots	60	90	120	150	180
Min:Sec	2:12	1:28	1:06	0:53	0:44



CATEGORY	A	B	C	D
S-11L	980-1 884 (900-1)	980-1¼ 884 (900-1¼)	980-2½ 884 (900-2½)	NA
<input checked="" type="checkbox"/> CIRCLING	980-1¼	877 (900-1¼)	980-2½ 877 (900-2½)	NA

SW-3, 25 MAR 2021 to 22 APR 2021

SW-3, 25 MAR 2021 to 22 APR 2021