

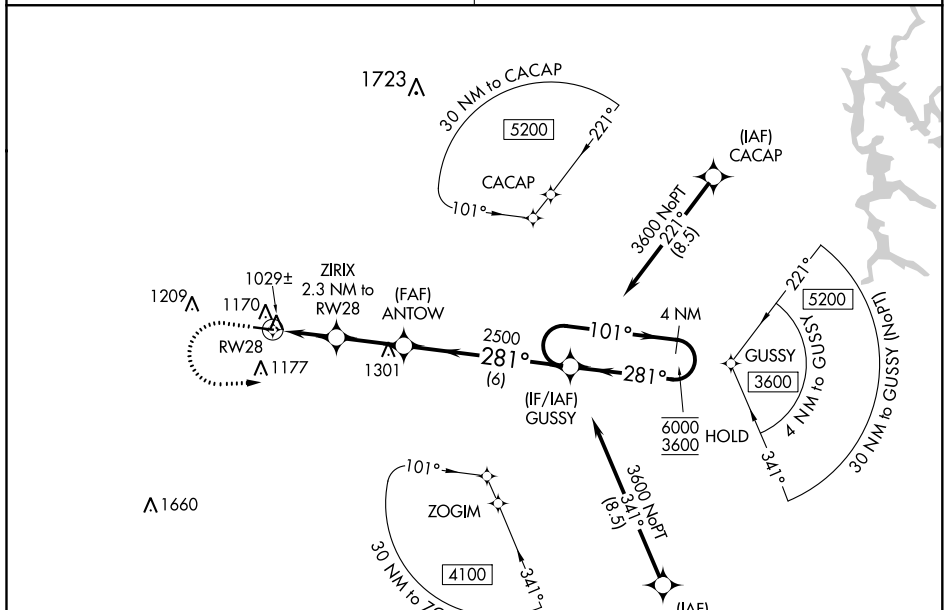
WAAS CH <b>62824</b> <b>W28A</b>	APP CRS <b>281°</b>	Rwy Idg TDZE Apt Elev	<b>4006</b> <b>974</b> <b>974</b>
--	------------------------	-----------------------------	---

# RNAV (GPS) RWY 28

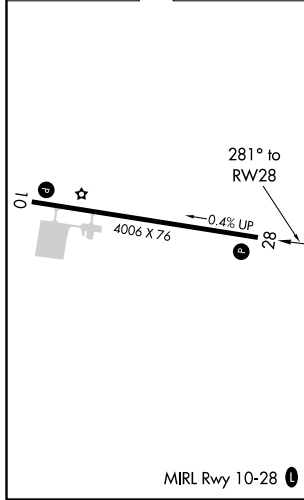
POLK COUNTY AIRPORT-CORNELIUS MOORE FIELD (4A4)

<p>RNP APCH.</p> <p><b>▼</b> Rwy 28 helicopter visibility reduction below 3/4 SM NA. Obtain local altimeter setting on CTAF, when not received, use Cartersville altimeter setting and increase all MDA 80 feet; increase LP and LNAV Cats C/D visibility 1/8 SM.</p> <p><b>▲</b> NA</p>	<p>MISSED APPROACH: Climb to 1500 then climbing left turn to 3600 direct GUSSY and hold.</p>
--	--

<p>ATLANTA CENTER <b>124.5 270.325</b></p>	<p>UNICOM <b>122.8 (CTAF) 0</b></p>
--	---



ELEV 974	TDZE 974
----------	----------



	1500	3600	GUSSY	ZIRIX 2.3 NM to RW28	ANTOW	GUSSY	4 NM Holding Pattern
	↑	↶	✦	↘ 3.00° TCH 41	↘ 281°	↖ 281°	↖ 281°
	0.9 NM	1.4 NM	2.4 NM	6 NM			
CATEGORY	A		B		C		D
LP MDA	1280-1		326 (400-1)				
LNAV MDA	1400-1		446 (500-1)		1400-1 3/8		446 (500-1 3/8)

# RNAV (GPS) RWY 28

SE-4, 25 MAR 2021 to 22 APR 2021

SE-4, 25 MAR 2021 to 22 APR 2021