

LOC I-BJC <b>111.7</b>	APP CRS <b>295°</b>	Rwy Idg 30R <b>9000</b> TDZE <b>5599</b> Apt Elev <b>5673</b>	30L <b>7002</b> <b>5628</b> <b>5673</b>
---------------------------	------------------------	---	--

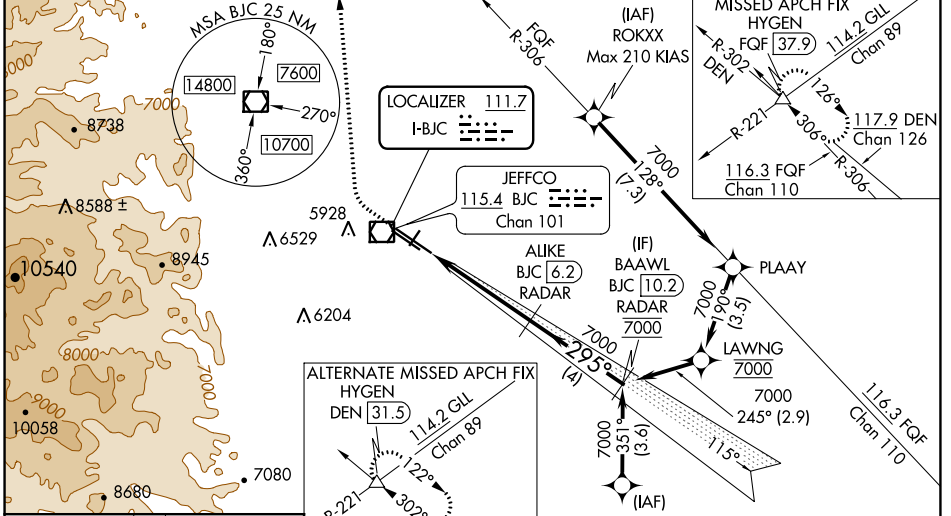
# ILS or LOC RWY 30R

ROCKY MOUNTAIN METROPOLITAN (BJC)

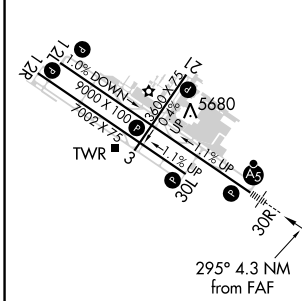
**NA** DME from BJC VOR/DME. Simultaneous reception of I-BJC and BJC DME required. DME or RADAR required. When local altimeter setting not received, use Denver Intl altimeter setting and increase all DA 82 feet and all MDA 100 feet. Increase S-ILS 30R all Cats visibility  $\frac{3}{8}$  mile. Increase S-LOC 30R Cats B/C/D visibility  $\frac{1}{4}$  mile. Increase Sidestep R30L Cats A/B visibility  $\frac{1}{4}$  mile, Cats C/D visibility  $\frac{1}{2}$  mile and Circling Cat C visibility  $\frac{1}{4}$  mile. For inoperative MALS/R, increase S-ILS 30R all Cats visibility  $\frac{1}{2}$  mile and increase S-LOC 30R Cat C/D visibility  $\frac{3}{8}$  mile. For inoperative MALS/R, when using Denver Intl altimeter setting, increase S-ILS 30R all Cats visibility to  $2\frac{1}{4}$  miles. Increase S-LOC 30R Cat B visibility to  $\frac{1}{4}$  mile and Cats C/D visibility to  $2\frac{1}{2}$  miles. For inoperative MALS/R, when using Denver Intl altimeter setting, increase S-ILS 30R\* all Cats visibility to 1 mile.  
\*Missed approach requires a minimum climb of 240 feet per NM to 9700.

**MALS/R**  
Climb to 6380 then climbing right turn to 10200 on heading 360° and on FQF VORTAC R-306 to HYGEN INT/FQF 37.9 DME and hold, continue climb-in-hold to 10200.

ATIS <b>126.25</b>	DENVER APP CON <b>126.1 360.75</b>	METRO TOWER * <b>118.6 (CTAF) 0 233.7</b>	GND CON <b>121.7</b>	CLNC DEL <b>132.6</b>
-----------------------	---------------------------------------	--	-------------------------	--------------------------



ELEV 5673	<b>D</b> TDZE 30R 5599
	TDZE 30L 5628



**RADAR OR GPS REQUIRED**

6380	10200	FQF R-306	HYGEN	ALIKE BJC 6.2 RADAR	BAOWL BJC 10.2 RADAR
↑		hdg 360°	△	7000	7000
				4.3 NM	4 NM
				GS 3.00°	TCH 52

HIRL Rwy 12L-30R  
MIRL Rwy 3-21 and 12R-30L  
REIL Rwy 12L, 12R and 30L

FAF to MAP 4.3 NM

Knots	60	90	120	150	180
Min:Sec	4:18	2:52	2:09	1:43	1:26

**C** CIRCLING

6340-1	667 (700-1)	6340-2	6340-2 1/4	6340-2 1/4	6860-3	1187 (1200-3)
--------	-------------	--------	------------	------------	--------	---------------

CATEGORY	A	B	C	D
S-ILS 30R		* 5799-1/2	200 (200-1/2)	
S-ILS 30L		6124-1 3/8	525 (500-1 3/8)	
S-LOC 30R	6300-1/2	701 (700-1/2)	6300-1 3/8	701 (700-1 3/8)
SIDESTEP 30L	6340-1	712 (700-1)	6340-2	712 (700-2)
			6360-2	6860-3
			687 (700-2)	1187 (1200-3)

SW-1, 25 MAR 2021 to 22 APR 2021

SW-1, 25 MAR 2021 to 22 APR 2021