

VOR/DME BJC <b>115.4</b> Chan 101	APP CRS <b>284°</b>	Rwy Idg TDZE Apt Elev	30L <b>7002</b> <b>5628</b> <b>5673</b>	30R <b>9000</b> <b>5599</b> <b>5673</b>
---	------------------------	-----------------------------	--	--

# VOR/DME RWY 30L/R

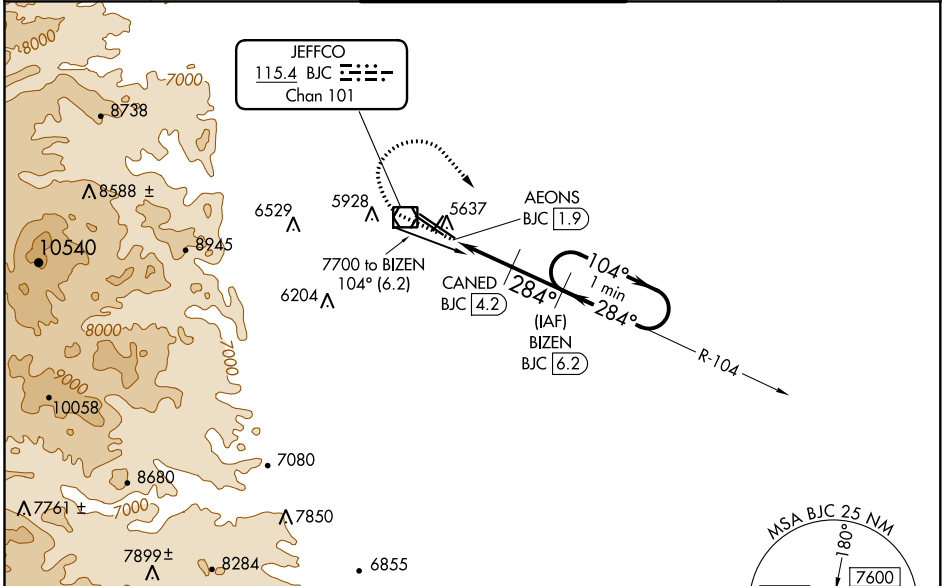
ROCKY MOUNTAIN METROPOLITAN (BJC)

**NA** When local altimeter setting not received, use Denver Intl altimeter setting and increase all MDA 100 feet. Increase S-30L Cats C/D visibility to 1 mile and Circling Cat C to 2 1/4 mile. For inoperative MALSR, increase S-30R all Cats visibility to 1 mile. For inoperative MALSR, when using Denver Intl altimeter setting, increase S-30R Cats C/D visibility to 1 1/2 mile.

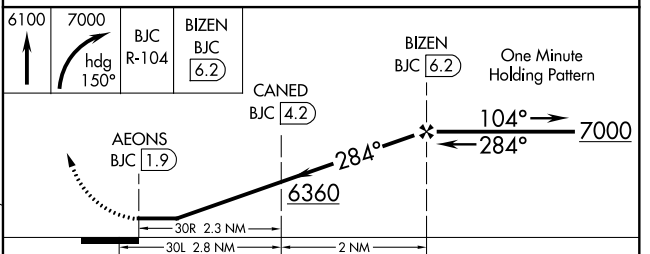
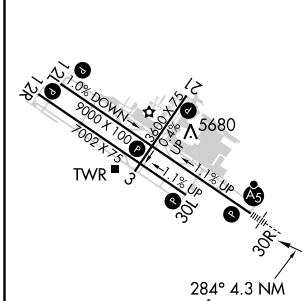
**MALSR Rwy 30R**

**MISSED APPROACH:** Climb to 6100 then climbing right turn to 7000 on heading 150° and on BJC VOR/DME R-104 to BIZEN/BJC 6.2 DME and hold.

ATIS <b>126.25</b>	DENVER APP CON <b>126.1 360.75</b>	METRO TOWER * <b>118.6(CTAF) 233.7</b>	GND CON <b>121.7</b>	CLNC DEL <b>132.6</b>
-----------------------	---------------------------------------	---	-------------------------	--------------------------



ELEV 5673	<b>D</b> TDZE 30L 5628
	TDZE 30R 5599



CATEGORY	A	B	C	D
S-30R	5920-1/2 321 (300-1/2)		5920-3/4 321 (300-3/4)	
S-30L	5920-1 292 (300-1)		5920-7/8 292 (300-7/8)	
<b>C</b> CIRCLING	6180-1 507 (600-1)	6240-1 567 (600-1)	6360-2 687 (700-2)	6860-3 1187 (1200-3)

HIRL Rwy 12L-30R **I**  
MIRL Rwy 3-21 and 12R-30L **I**  
REIL Rwy 12L, 12R and 30L **I**

SW-1, 25 MAR 2021 to 22 APR 2021

SW-1, 25 MAR 2021 to 22 APR 2021