

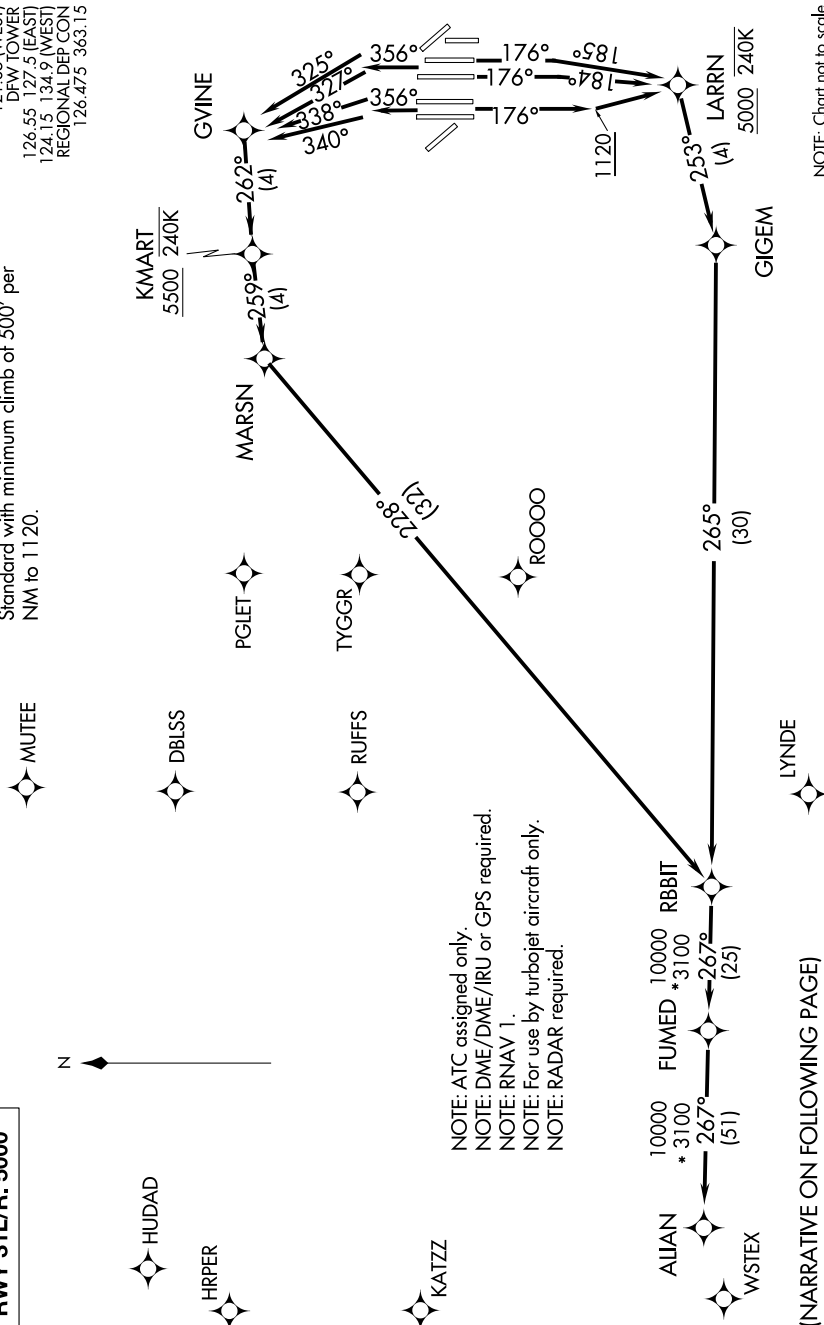
# ALIAN TWO DEPARTURE (RNAV)

SC-2, 25 MAR 2021 to 22 APR 2021

**TOP ALTITUDE:**  
 RWY 17C/R, 18L/R,  
 35C/L, 36L/R: 10000  
 RWY 31L/R: 5000

**TAKEOFF MINIMUMS**  
 Rwy 31L/R: Standard  
 Rwy 17C/R, 18L/R, 35L/C, 36L/R:  
 Standard with minimum climb of 500' per  
 NM to 1120.

D-ATIS DEP: 135.925  
 CLNC DEL: 128.25  
 CPDLC  
 GND CON  
 121.65 121.8 (EAST)  
 121.85 (WEST)  
 DFW TOWER  
 126.55 127.5 (EAST)  
 124.15 134.9 (WEST)  
 REGIONAL DEP CON  
 126.475 363.15



NOTE: ATC assigned only.  
 NOTE: DME/DME/IRU or GPS required.  
 NOTE: RNAV 1.  
 NOTE: For use by turbojet aircraft only.  
 NOTE: RADAR required.

(NARRATIVE ON FOLLOWING PAGE)

NOTE: Chart not to scale

SC-2, 25 MAR 2021 to 22 APR 2021