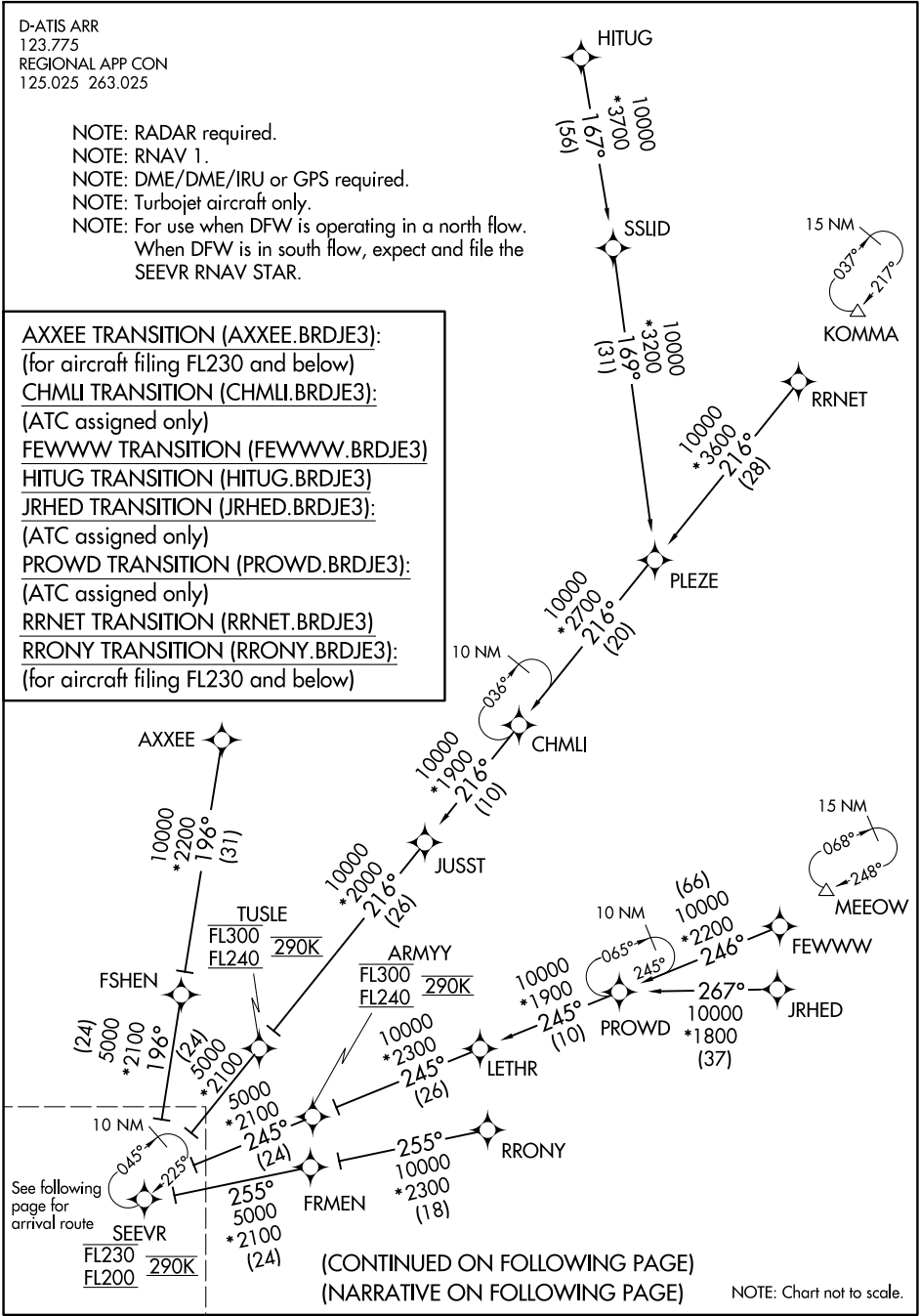


# BRDJE THREE ARRIVAL (RNAV) Transition Routes

D-ATIS ARR  
123.775  
REGIONAL APP CON  
125.025 263.025

- NOTE: RADAR required.
- NOTE: RNAV 1.
- NOTE: DME/DME/IRU or GPS required.
- NOTE: Turbojet aircraft only.
- NOTE: For use when DFW is operating in a north flow.  
When DFW is in south flow, expect and file the SEEVR RNAV STAR.

- AXXEE TRANSITION (AXXEE.BRDJE3):  
(for aircraft filing FL230 and below)
- CHMLI TRANSITION (CHMLI.BRDJE3):  
(ATC assigned only)
- FEWWWW TRANSITION (FEWWWW.BRDJE3)
- HITUG TRANSITION (HITUG.BRDJE3)
- JRHED TRANSITION (JRHED.BRDJE3):  
(ATC assigned only)
- PROWD TRANSITION (PROWD.BRDJE3):  
(ATC assigned only)
- RRNET TRANSITION (RRNET.BRDJE3)
- RRONY TRANSITION (RRONY.BRDJE3):  
(for aircraft filing FL230 and below)



SC-2, 25 MAR 2021 to 22 APR 2021

SC-2, 25 MAR 2021 to 22 APR 2021

# BRDJE THREE ARRIVAL (RNAV) Transition Routes

(CONTINUED ON FOLLOWING PAGE)  
(NARRATIVE ON FOLLOWING PAGE)

NOTE: Chart not to scale.