

CEDAR CREEK ONE ARRIVAL

Arrival Routes

DALLAS-FORT WORTH, TEXAS

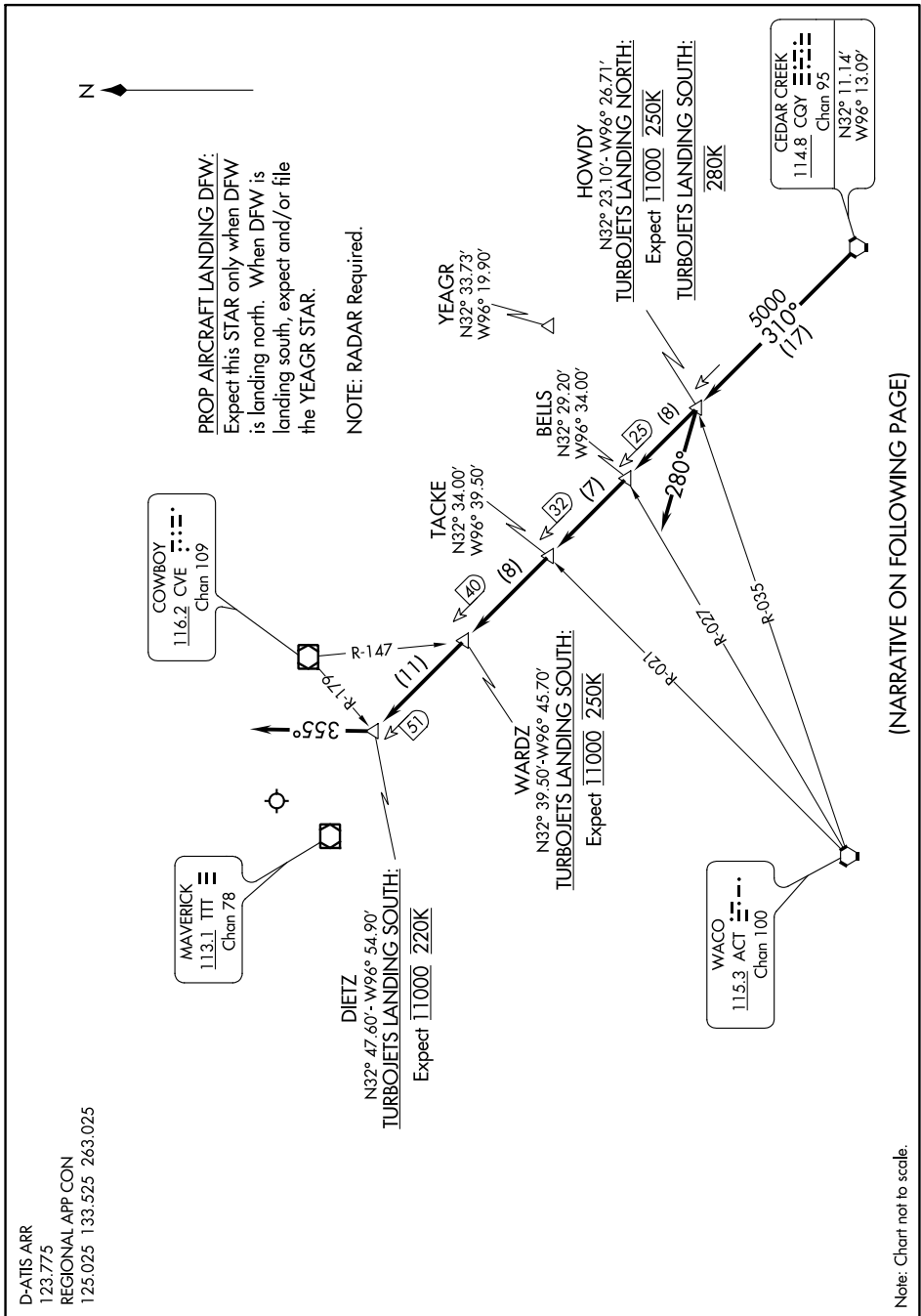
SC-2, 25 MAR 2021 to 22 APR 2021

D-ATIS ARR
123.775
REGIONAL APP CON
125.025 133.525 263.025

CEDAR CREEK ONE ARRIVAL

Arrival Routes

DALLAS-FORT WORTH, TEXAS



(NARRATIVE ON FOLLOWING PAGE)

SC-2, 25 MAR 2021 to 22 APR 2021

Note: Chart not to scale.