

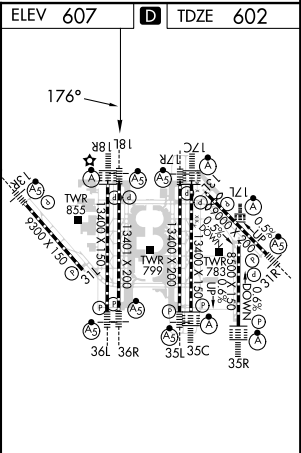
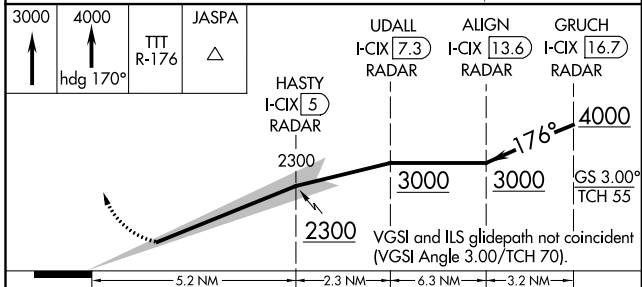
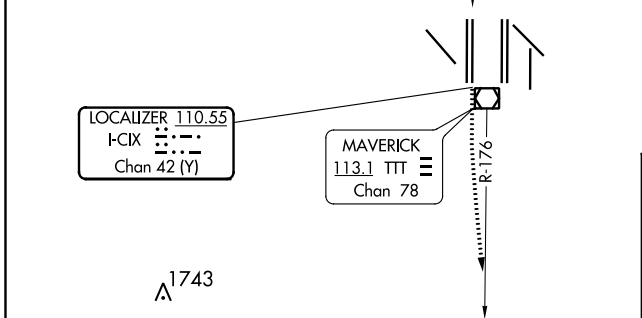
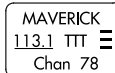
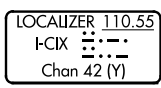
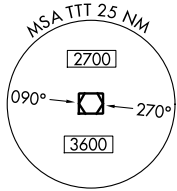
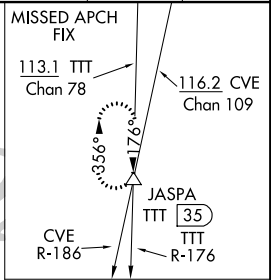
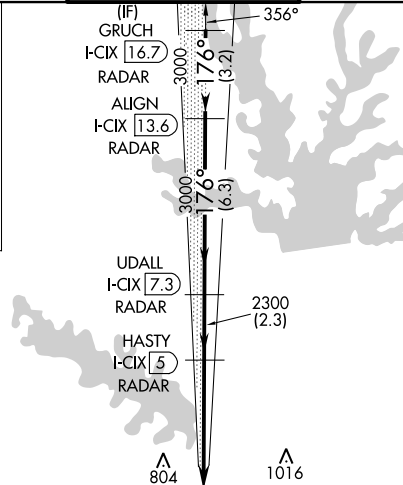
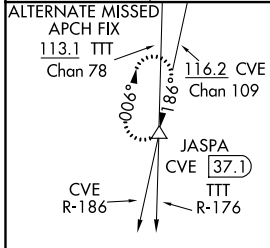
LOC/DME I-CIX <b>110.55</b>	APP CRS <b>176°</b>	Rwy Idg <b>13401</b>
Chan <b>42 (Y)</b>		TDZE <b>602</b>
		Apt Elev <b>607</b>

# CONVERGING ILS RWY 18L

DALLAS-FORT WORTH INTL (DFW)

DME and RADAR required.		MALSR	MISSED APPROACH: Climb to 3000, then climb to 4000 on heading 170° and TTT VOR/DME R-176 to JASPA/TTT 35 DME and hold.
Simultaneous approach authorized with CONVERGING ILS RWY 13R.			

D-ATIS ARR <b>123.775</b> DEP <b>135.925</b>	REGIONAL APP CON <b>118.425</b>	DFW TOWER <b>126.55 127.5 EAST</b> <b>124.15 134.9 WEST</b>	GND CON <b>121.65 121.8 EAST</b> <b>121.85 WEST</b>	CLNC DEL <b>128.25</b>	CPDLC
--	------------------------------------	---	---	---------------------------	-------



CATEGORY	A	B	C	D
S-ILS 18L		802/18	200 (200-1/2)	

HIRL all Rwys  
REIL Rws 13L and 31L  
TDZ/CL all Rws except 13L and 31L

SC-2, 25 MAR 2021 to 22 APR 2021

SC-2, 25 MAR 2021 to 22 APR 2021