

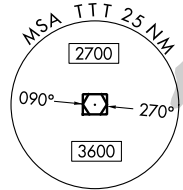
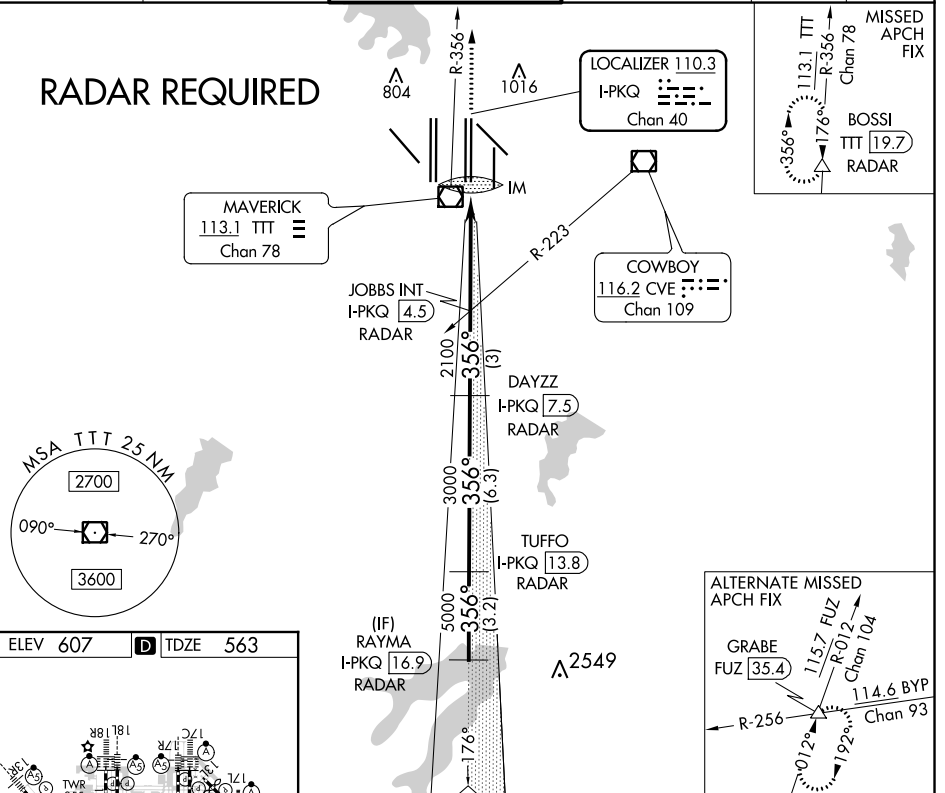
LOC/DME I-PKQ 110.3 Chan 40	APP CRS 356°	Rwy Idg TDZE Apt Elev	13400 563 607
--	------------------------	-----------------------------	--

CONVERGING ILS RWY 35C

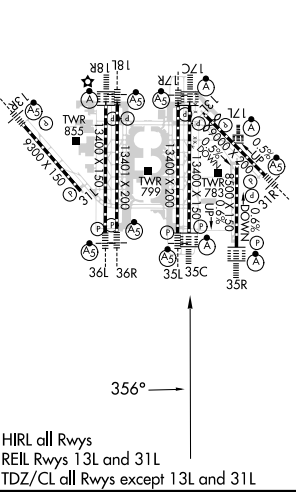
DALLAS-FORT WORTH INTL (DFW)

DME or RADAR required. Simultaneous approach authorized with Converging ILS Rwy 31R.		ALSF-2 	MISSED APPROACH: Climb to 3000 on TTT VOR/DME R-356 to BOSSI/TTT 19.7 DME/RADAR and hold.		
D-ATIS ARR 123.775 DEP 135.925	REGIONAL APP CON 127.075	DFW TOWER 126.55 127.5 EAST 124.15 134.9 WEST	GND CON 121.65 121.8 EAST 121.85 WEST	CLNC DEL 128.25	CPDLC

RADAR REQUIRED



ELEV 607	TDZE 563
----------	----------



DALLAS-FORT WORTH, TEXAS
 Amdt 3 18SEP14

3000	BOSSI	VGSi and ILS glidepath not coincident (VGSi Angle 3.00/TCH 76).			
TTT R-356		JOBBS I-PKQ 4.5 RADAR	DAYZZ I-PKQ 7.5 RADAR	TUFFO I-PKQ 13.8 RADAR	RAYMA I-PKQ 16.9 RADAR
	IM	2100	3000	5000	6000
	663				GS 3.00° TCH 59
	0.1	4.5 NM	3 NM	6.3 NM	3.2 NM
CATEGORY	A	B	C	D	
S-ILS 35C	763/18 200 (200-1/2)				

DALLAS-FORT WORTH INTL (DFW)
 32°54'N-97°02'W
CONVERGING ILS RWY 35C

SC-2, 25 MAR 2021 to 22 APR 2021

SC-2, 25 MAR 2021 to 22 APR 2021