

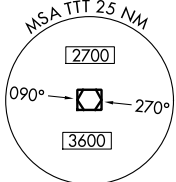
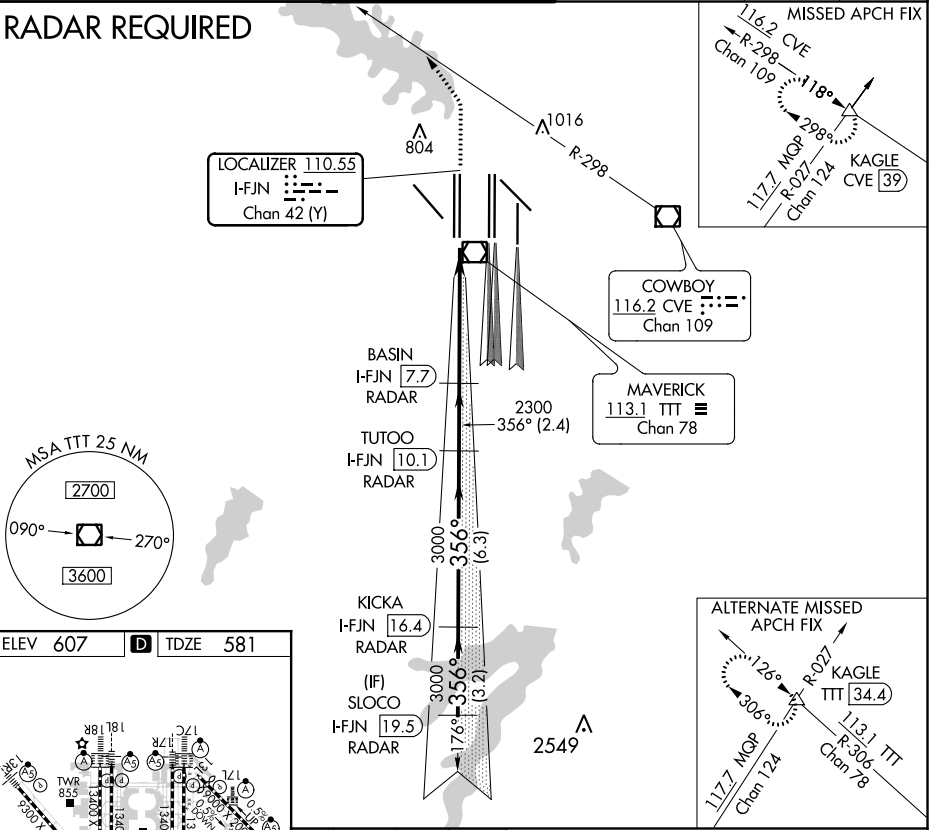
LOC/DME I-FJN 110.55 Chan 42 (Y)	APP CRS 356°	Rwy Idg TDZE Apt Elev	13401 581 607
--	------------------------	-----------------------------	--

CONVERGING ILS RWY 36R

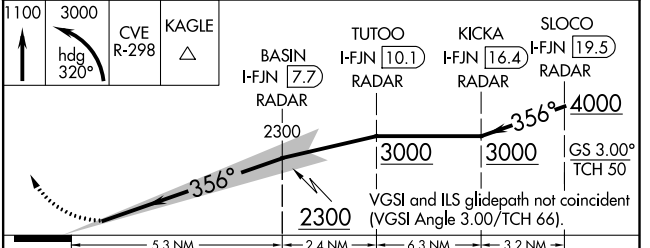
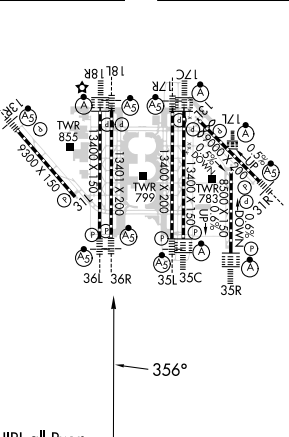
DALLAS-FORT WORTH INTL (DFW)

D-ATIS ARR 123.775 DEP 135.925	REGIONAL APP CON 118.425	DFW TOWER 126.55 127.5 EAST 124.15 134.9 WEST		GND CON 121.65 121.8 EAST 121.85 WEST	CLNC DEL 128.25	CPDLC
		<p>Simultaneous approach authorized with Converging ILS Rwy 31R. DME or Radar required.</p> <p>MALSR </p> <p>MISSED APPROACH: Climb to 1100, then climbing left turn to 3000 on heading 320° and CVE VOR/DME R-298 to KAGLE INT/CVE 39 DME and hold.</p>				

RADAR REQUIRED



ELEV 607	D	TDZE 581
-----------------	----------	-----------------



CATEGORY	A	B	C	D
S-ILS 36R	781/18		200 (200-½)	

SC-2, 25 MAR 2021 to 22 APR 2021

SC-2, 25 MAR 2021 to 22 APR 2021