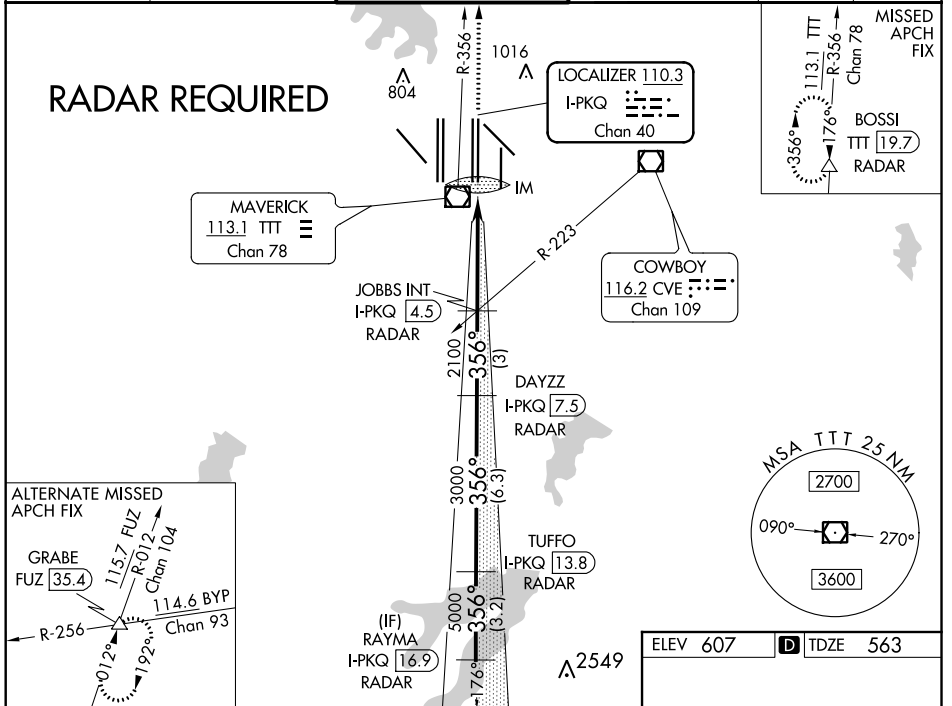


LOC/DME I-PKQ 110.3 Chan 40	APP CRS 356°	Rwy Idg TDZE Apt Elev	13400 563 607
--	------------------------	-----------------------------	--

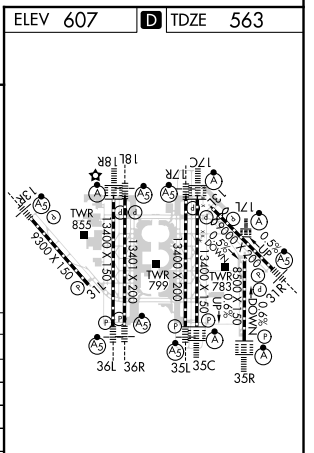
ILS RWY 35C (CAT II & III)

DALLAS-FORT WORTH INTL (DFW)

D-ATIS ARR 123.775 DEP 135.925		REGIONAL APP CON 127.075	DFW TOWER 126.55 127.5 EAST 124.15 134.9 WEST	GND CON 121.65 121.8 EAST 121.85 WEST	CLNC DEL 128.25	CPDLC
--	--	------------------------------------	---	---	---------------------------	-------



3000 TTT R-356	BOSSI	VGSI and ILS glidepath not coincident (VGSI Angle 3.00/TCH 76).		TUFFO I-PKQ 13.8 RADAR	RAYMA I-PKQ 16.9 RADAR
IM 663	2100	3000	5000	6000	GS 3.00° TCH 59
-1050	4.6 NM	3 NM	6.3 NM	3.2 NM	
CATEGORY	A	B	C	D	
S-ILS 35C	CAT II RA 100/12 100 DA 663				
S-ILS 35C	CAT IIIa RVR 07				
S-ILS 35C	CAT IIIb RVR 06				
S-ILS 35C	CAT IIIc NA				



CATEGORY II & III ILS - SPECIAL AIRCREW & AIRCRAFT CERTIFICATION REQUIRED

HIRL all Rwys
REIL Rwys 13L and 31L
TDZ/CL all Rwys except 13L and 31L

SC-2, 25 MAR 2021 to 22 APR 2021

SC-2, 25 MAR 2021 to 22 APR 2021