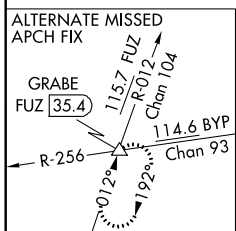
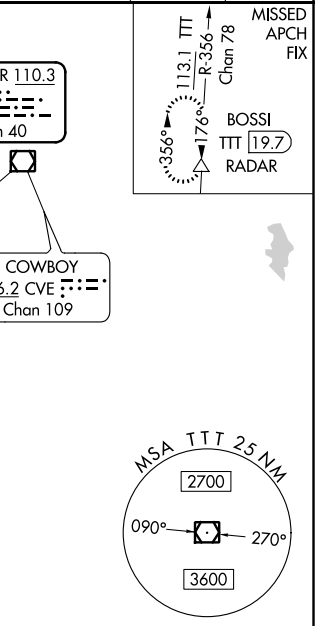
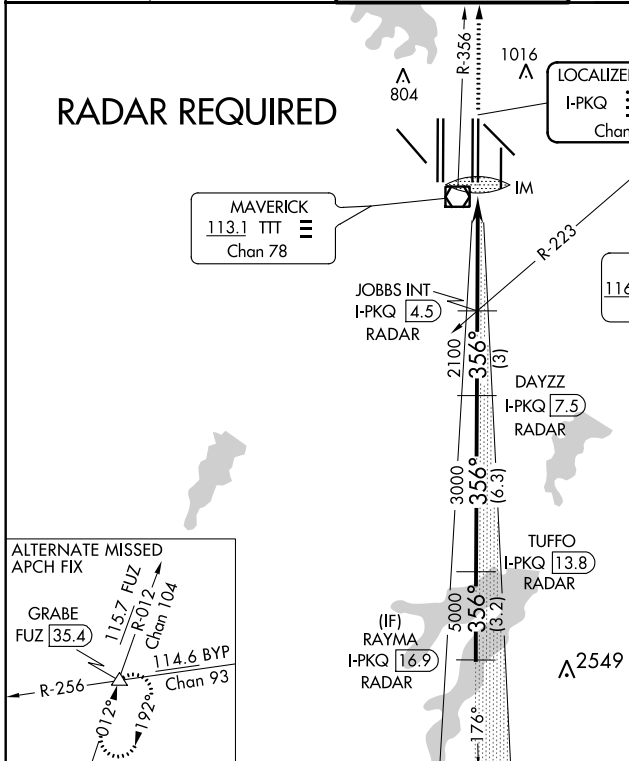


| | | | |
|--|------------------------|-----------------------------|--|
| LOC/DME I-PKQ 110.3 Chan 40 | APP CRS 356° | Rwy Idg TDZE Apt Elev | 13400 563 607 |
|--|------------------------|-----------------------------|--|

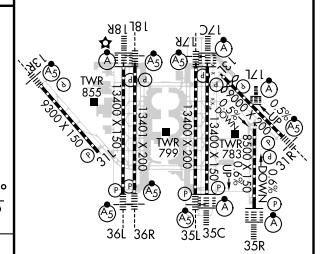
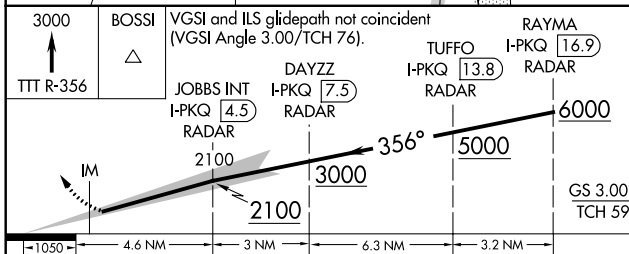
ILS RWY 35C (SA CAT I)

DALLAS-FORT WORTH INTL (DFW)

| | | | | | |
|---|------------|---|------------------------------------|---|---|
| DME or RADAR required. Simultaneous approach authorized with Rwy 35R, Rwy 36L/R. Requires specific OPSPEC, MSPEC, or LOA approval and use of HUD to DA. | ALSF-2 | MISSED APPROACH: Climb to 3000 on TTT VOR/DME R-356 to BOSSI/TTT 19.7 DME/RADAR and hold. | | | |
| | | D-ATIS ARR 123.775 DEP 135.925 | REGIONAL APP CON 127.075 | DFW TOWER 126.55 127.5 EAST 124.15 134.9 WEST | GND CON 121.65 121.8 EAST 121.85 WEST |



| | |
|----------|-------------------|
| ELEV 607 | D TDZE 563 |
|----------|-------------------|



| | | | | |
|-----------|-----------|---|------------|---|
| CATEGORY | A | B | C | D |
| S-ILS 35C | RA 153/14 | | 150 DA 713 | |

SA CATEGORY I ILS - SPECIAL AIRCREW & AIRCRAFT CERTIFICATION REQUIRED

HIRL all Rwys
 REIL Rwy 13L and 31L
 TDZ/CL all Rwys except 13L and 31L

SC-2, 25 MAR 2021 to 22 APR 2021

SC-2, 25 MAR 2021 to 22 APR 2021