

LOC/DME I-LWN 109.5 Chan 32	APP CRS 135°	Rwy Idg TDZE Apt Elev 9300 591 607
---	------------------------	--

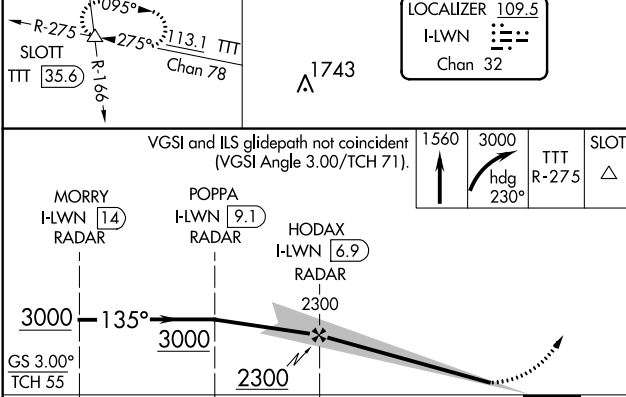
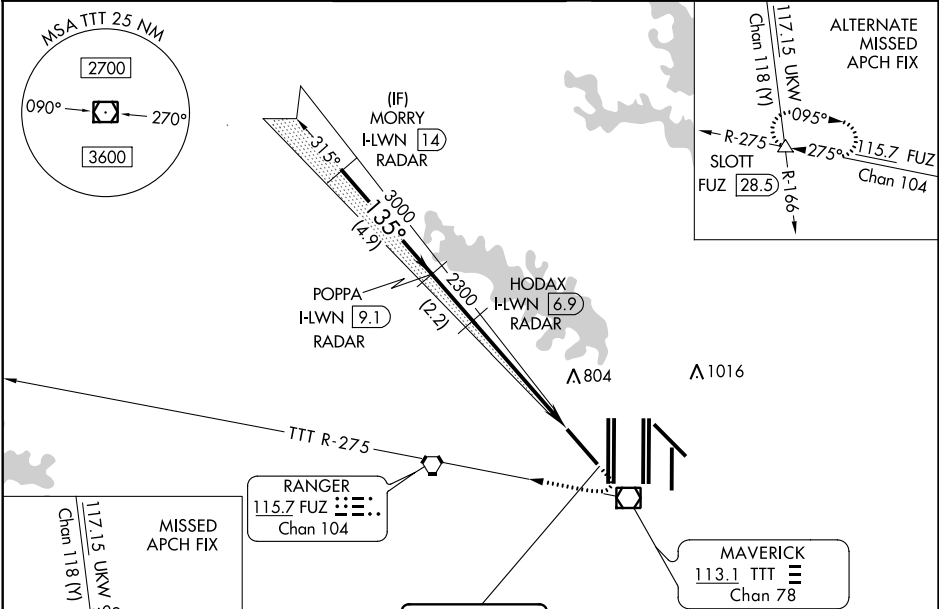
ILS or LOC RWY 13R

DALLAS-FORT WORTH INTL (DFW)

RADAR required for procedure entry.
DME or RADAR required for LOC only.

MALS/R MISSED APPROACH: Climb to 1560 then climbing right turn to 3000 on heading 230° and TTT VOR/DME R-275 to SLOTT INT/TTT 35.6 DME and hold.

D-ATIS ARR 123.775 DEP 135.925	REGIONAL APP CON 133.15 118.1	DFW TOWER 126.55 127.5 EAST 124.15 134.9 WEST	GND CON 121.65 121.8 EAST 121.85 WEST	CLNC DEL 128.25	CPDLC
--	---	---	---	---------------------------	-------



ELEV 607 TDZE 591

135° 5.2 NM from FAF

HIRL all Rwy's
REL Rwy's 13L and 31L
TDZ/CL all Rwy's except 13L, and 31L
FAF to MAP 5.2 NM

Knots	60	90	120	150	180
Min:Sec	5:12	3:28	2:36	2:05	1:44

CATEGORY	A	B	C	D
S-ILS 13R	791/18		200 (200-½)	
S-LOC 13R	1240/24	649 (700-½)	1240-1⅓	649 (700-1⅓)

SC-2, 25 MAR 2021 to 22 APR 2021

SC-2, 25 MAR 2021 to 22 APR 2021