

LOC/DME I-CIX 110.55 Chan 42 (Y)	APP CRS 176°	Rwy 18L Idg 13401 TDZE 602 Apt Elev 607	Rwy 18R Idg 13400 TDZE 607 Apt Elev 607
--	------------------------	--	--

ILS or LOC RWY 18L

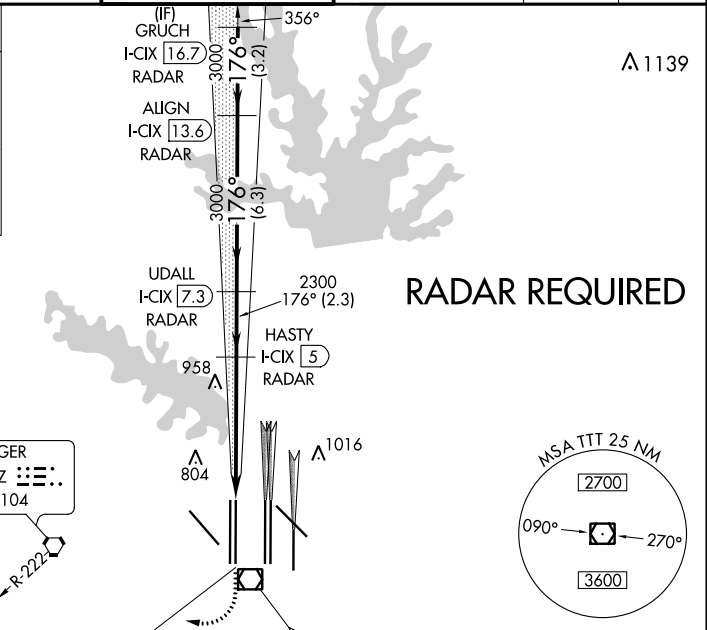
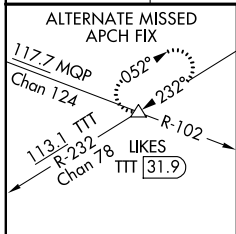
DALLAS-FORT WORTH INTL (DFW)

⚠ Simultaneous approach authorized with Rwy 17L/C/R. For inop MALSR/ALSF, increase S-LOC 18L Cat C/D and sidestep 18R Cat C visibility to 1 1/4 mile. Inop table does not apply to sidestep 18R Cats A and B. DME or RADAR required.

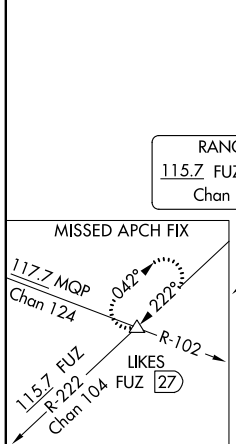
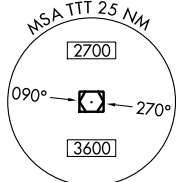
Rwy 18L MALSR (AS) | Rwy 18R ALSF-2 (A)

MISSED APPROACH: Climb to 1100, then climbing right turn to 3000 on heading 245° and FUZ VORTAC R-222 to LIKES INT/FUZ 27 DME and hold.

D-ATIS ARR 123.775 DEP 135.925	REGIONAL APP CON 118.425	DFW TOWER 126.55 127.5 EAST 124.15 134.9 WEST	GND CON 121.65 121.8 EAST 121.85 WEST	CLNC DEL 128.25	CPDLC
--	------------------------------------	---	---	---------------------------	-------



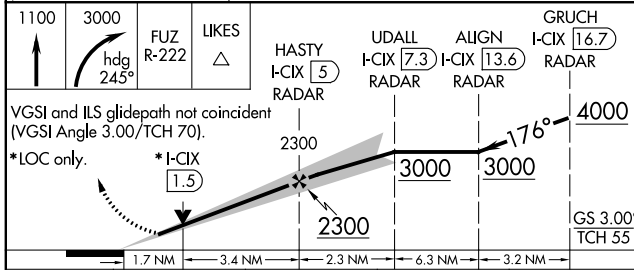
RADAR REQUIRED



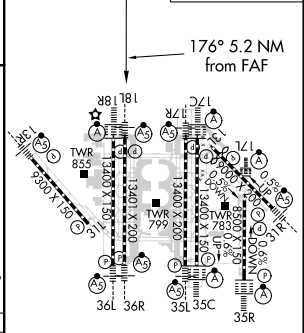
RANGER
115.7 FUZ
Chan 104

LOCALIZER 110.55
I-CIX
Chan 42 (Y)

MAVERICK
113.1 TTT
Chan 78



ELEV 607	TDZE 602 18L
	TDZE 607 18R



CATEGORY	A	B	C	D
S-ILS 18L		802/18	200 (200-1/2)	
S-LOC 18L	1220/24	618 (700-1/2)	1220-1 3/8	618 (700-1 3/8)
SIDESTEP 18R	1220/50	613 (700-1)	1220-1 3/8	1220-1 1/2
			613 (700-1 3/8)	613 (700-1 1/2)

HIRL all Rwys					
REIL Rwys 13L and 31L					
TDZ/CL all Rwys except 13L and 31L					
FAF to MAP 5.2 NM					
Knots	60	90	120	150	180
Min:Sec	5:12	3:28	2:36	2:05	1:44

SC-2, 25 MAR 2021 to 22 APR 2021

SC-2, 25 MAR 2021 to 22 APR 2021