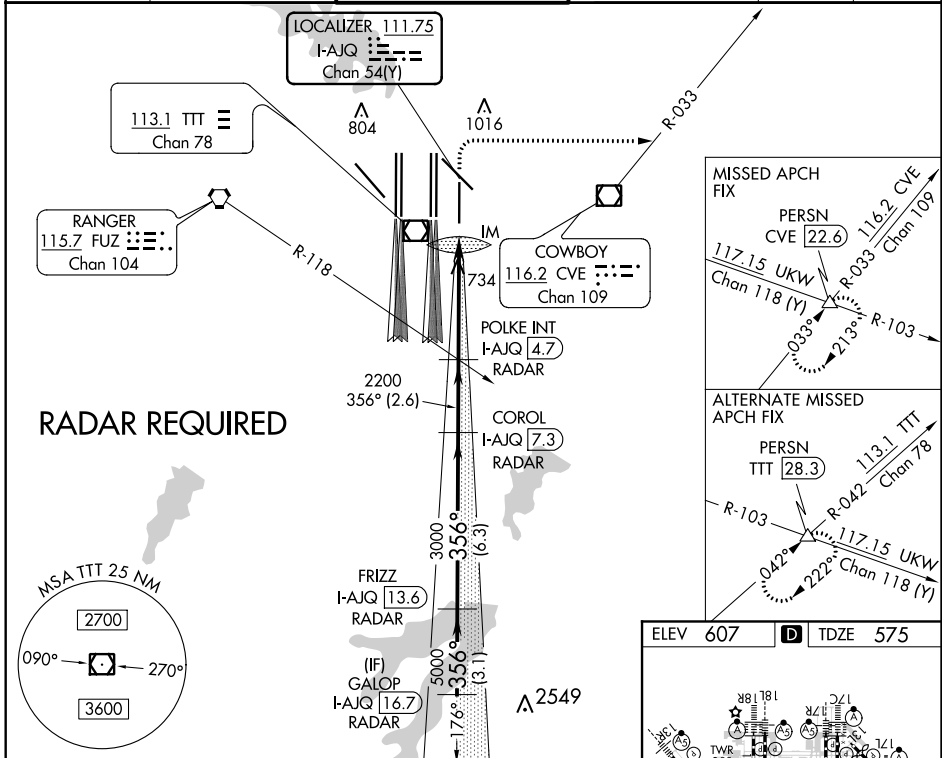


LOC/DME I-AJQ <b>111.75</b> Chan 54(Y)	APP CRS <b>356°</b>	Rwy Idg TDZE Apt Elev <b>8500</b> <b>575</b> <b>607</b>
--	------------------------	--

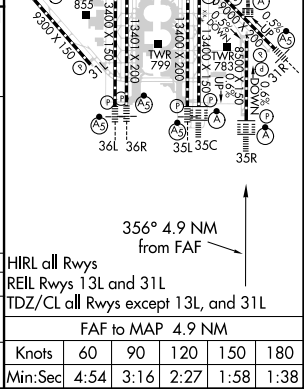
# ILS or LOC RWY 35R

DALLAS-FORT WORTH INTL (DFW)

D-ATIS ARR <b>123.775</b> DEP <b>135.925</b>		REGIONAL APP CON <b>119.4</b>	DFW TOWER <b>126.55 127.5</b> EAST <b>124.15 134.9</b> WEST	GND CON <b>121.65 121.8</b> EAST <b>121.85</b> WEST	CLNC DEL <b>128.25</b>	CPDLC
--	--	----------------------------------	---	---	---------------------------	-------



GALOP I-AJQ 16.7 RADAR	FRIZZ I-AJQ 13.6 RADAR	COROL I-AJQ 7.3 RADAR	POLKE INT I-AJQ 4.7 RADAR	1040 3000	PERSN CVE R-033
5000 356° GS 3.00° TCH 58 VGS1 and ILS glidepath not coincident (VGS1 Angle 3.00/TCH 73).				*I-AJQ 1.1 I-AJQ DME ANTENNA IM I-AJQ 0.2	*LOC only
3.1 NM 6.3 NM 2.6 NM 3.7 NM 1.1 0.1			HIRL all Rwys REIL Rwys 13L and 31L TDZ/CL all Rwys except 13L, and 31L FAF to MAP 4.9 NM		
S-ILS 35R		775/18 200 (200-½)			
S-LOC 35R		1040/24	465 (500-½)	1040/50	465 (500-1)



SC-2, 25 MAR 2021 to 22 APR 2021

SC-2, 25 MAR 2021 to 22 APR 2021