

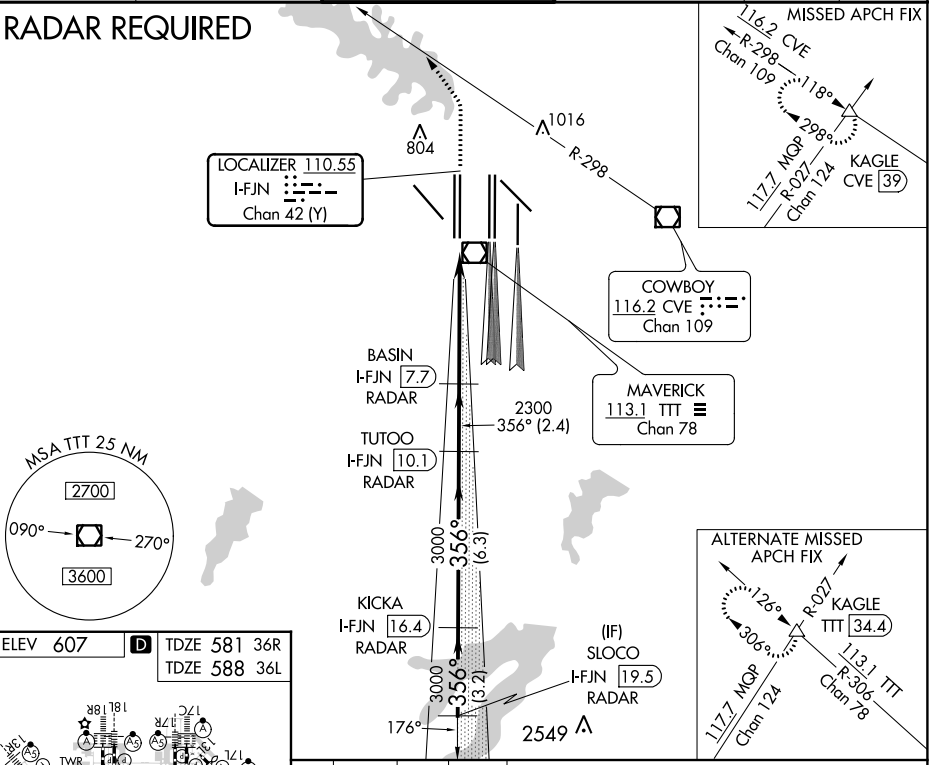
| | | | |
|---|------------------------|--|--|
| LOC/DME I-FJN 110.55 Chan 42 (Y) | APP CRS 356° | Rwy 36R Idg 13401 TDZE 581 Apt Elev 607 | Rwy 36L Idg 13400 TDZE 588 Apt Elev 607 |
|---|------------------------|--|--|

ILS or LOC RWY 36R

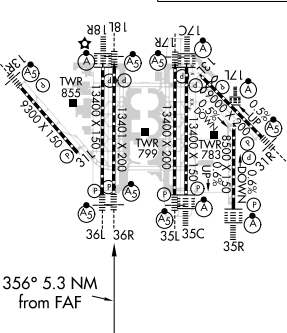
DALLAS-FORT WORTH INTL (DFW)

| | | | | | |
|--|------------------------------------|---|--|---------------------------|-------|
| Simultaneous approach authorized with Rwy 35L/C/R. Inop table does not apply to Sidestep 36L Cats A and B. DME or RADAR required. | | Rwy 36R/L MALSR | MISSED APPROACH: Climb to 1100, then climbing left turn to 3000 on heading 320° and CVE VOR/DME R-298 to KAGLE INT/CVE 39 DME and hold. | | |
| D-ATIS ARR 123.775 DEP 135.925 | REGIONAL APP CON 118.425 | DFW TOWER 126.55 127.5 EAST 124.15 134.9 WEST | GND CON 121.65 121.8 EAST 121.85 WEST | CLNC DEL 128.25 | CPDLC |

RADAR REQUIRED



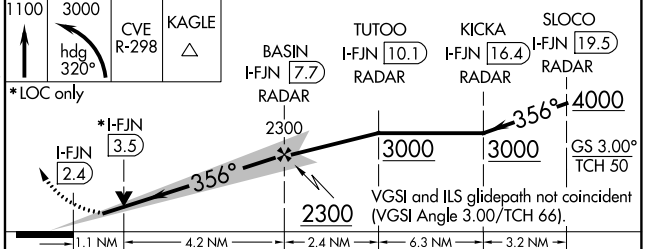
| | | | |
|----------|----------|--------------|--------------|
| ELEV 607 | D | TDZE 581 36R | TDZE 588 36L |
|----------|----------|--------------|--------------|



HIRL all Rwy
REIL Rwy 13L and 31L
TDZ/CL all Rwy except 13L and 31L

FAF to MAP 5.3 NM

| | | | | | |
|---------|------|------|------|------|------|
| Knots | 60 | 90 | 120 | 150 | 180 |
| Min:Sec | 5:18 | 3:32 | 2:39 | 2:07 | 1:46 |



| | | | | |
|--------------|---------------------|-------------|---------|----------------------|
| CATEGORY | A | B | C | D |
| S-ILS 36R | 781/18 200 (200-½) | | | |
| S-LOC 36R | 1000/24 | 419 (400-½) | 1000/40 | 419 (400-¾) |
| SIDESTEP 36L | 1080/50 492 (500-1) | | | 1080-1½ 492 (500-1½) |

SC-2, 25 MAR 2021 to 22 APR 2021

SC-2, 25 MAR 2021 to 22 APR 2021