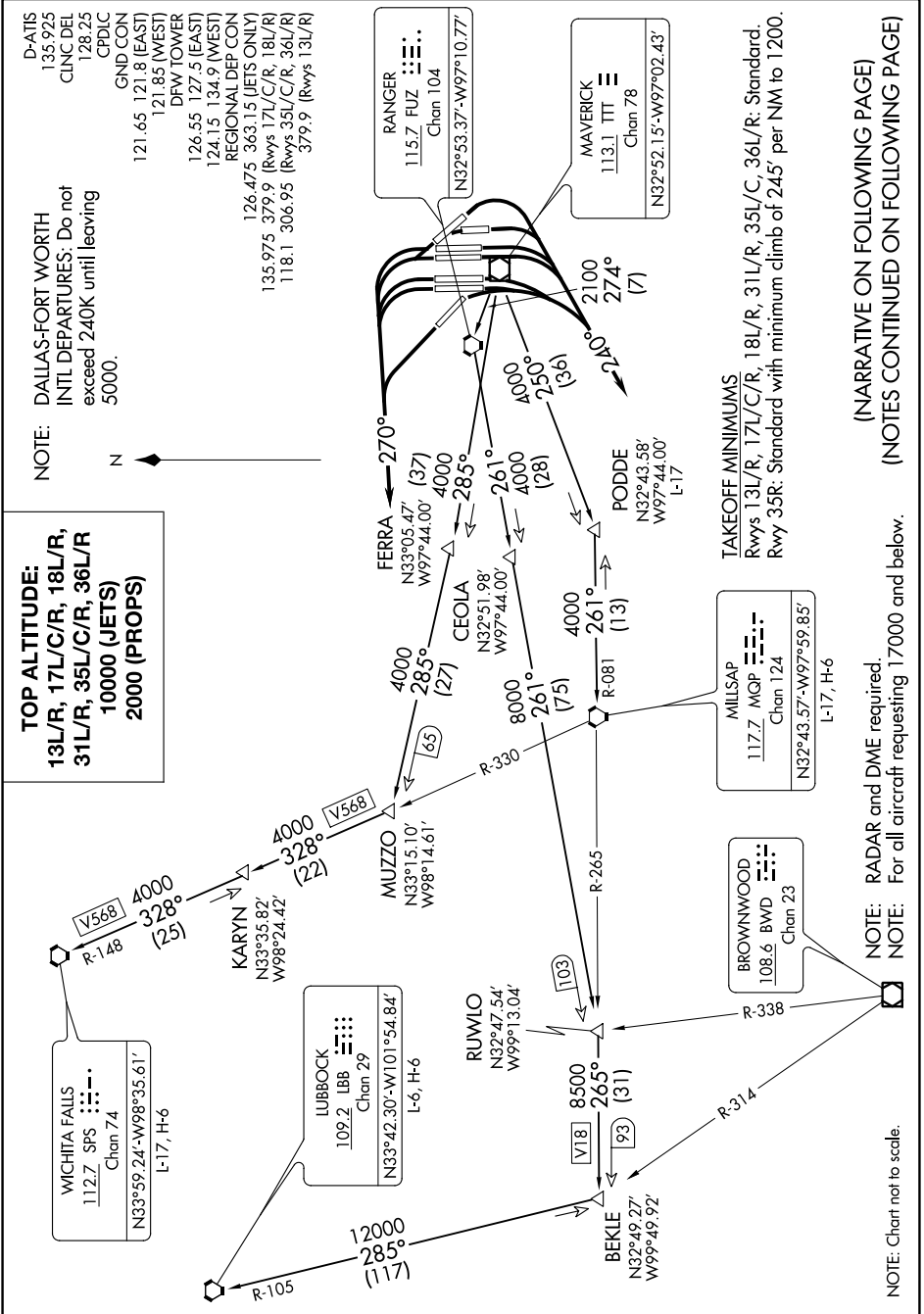


# KINGDOM EIGHT DEPARTURE

SC-2, 25 MAR 2021 to 22 APR 2021



**TOP ALTITUDE:**  
**13L/R, 17L/C/R, 18L/R,**  
**31L/R, 35L/C/R, 36L/R**  
**10000 (JETS)**  
**2000 (PROPS)**

**NOTE: DALLAS-FORT WORTH INTL DEPARTURES: Do not exceed 240K until leaving 5000.**



**(NARRATIVE ON FOLLOWING PAGE)**  
**(NOTES CONTINUED ON FOLLOWING PAGE)**

**NOTE: RADAR and DME required.**  
**NOTE: For all aircraft requesting 17000 and below.**

**NOTE: Chart not to scale.**

# KINGDOM EIGHT DEPARTURE

SC-2, 25 MAR 2021 to 22 APR 2021