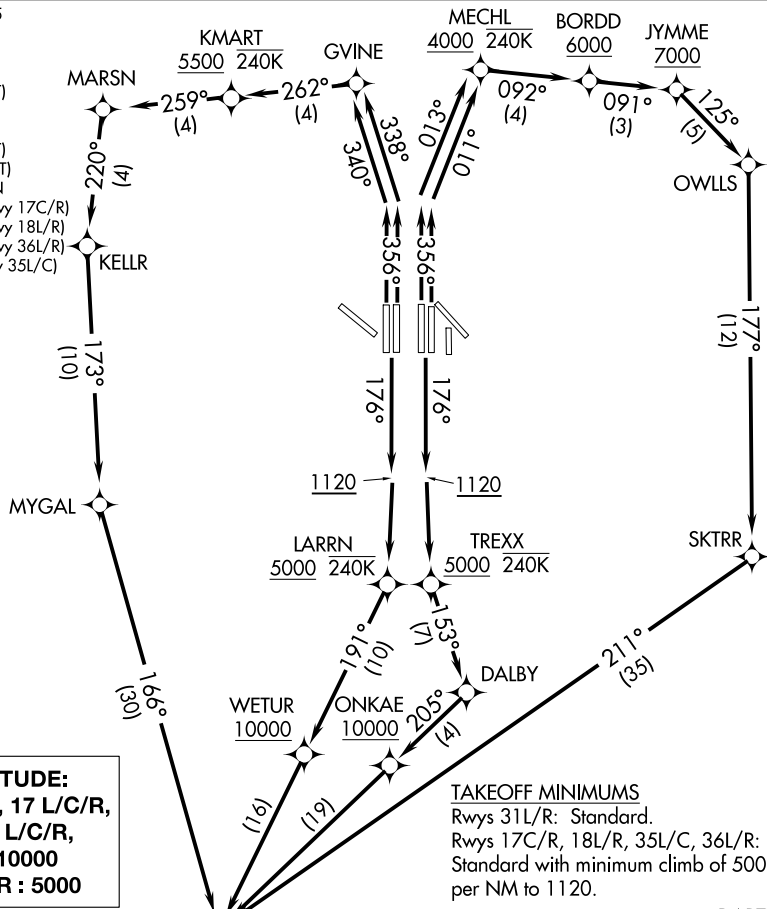


NELYN SIX DEPARTURE (RNAV)

D-ATIS DEP 135.925
 CLNC DEL 128.25
 CPDLC
 GND CON
 121.65 121.8 (EAST)
 121.85 (WEST)
 DFW TOWER
 126.55 127.5 (EAST)
 124.15 134.9 (WEST)
 REGIONAL DEP CON
 125.125 353.95 (Rwy 17C/R)
 125.125 353.95 (Rwy 18L/R)
 126.475 363.15 (Rwy 36L/R)
 118.55 290.35 (Rwy 35L/C)



TOP ALTITUDE:
 RWYS 13 L/R, 17 L/C/R,
 18 L/R, 35 L/C/R,
 36 L/R : 10000
 RWY 31 L/R : 5000

TAKEOFF MINIMUMS
 Rwy 31L/R: Standard.
 Rwy 17C/R, 18L/R, 35L/C, 36L/R:
 Standard with minimum climb of 500'
 per NM to 1120.

- NOTE: SAN ANTONIO TRANSITION: For aircraft overflying CENTEX and SAN ANTONIO.
- NOTE: WACO TRANSITION: For aircraft inbound to Waco or Gray terminal airports.
- NOTE: DME/DME/IRU or GPS required.
- NOTE: RNAV 1.
- NOTE: For use by turbo-jets only.
- NOTE: Turbo-jet aircraft landing San Antonio and Austin terminals areas expect the JASPA DEPARTURE.
- NOTE: Props file and expect KEENE or TRI-GATE DEPARTURE.
- NOTE: RADAR required.

(NARRATIVE ON FOLLOWING PAGE)

NOTE: Chart not to scale.

SC-2, 25 MAR 2021 to 22 APR 2021

SC-2, 25 MAR 2021 to 22 APR 2021

NELYN SIX DEPARTURE (RNAV)