

WAAS CH 99407 W18B	APP CRS 176°	Rwy Idg 13400 TDZE 607 Apt Elev 607
--	------------------------	--

RNAV (GPS) RWY 18R

DALLAS-FORT WORTH INTL (DFW)

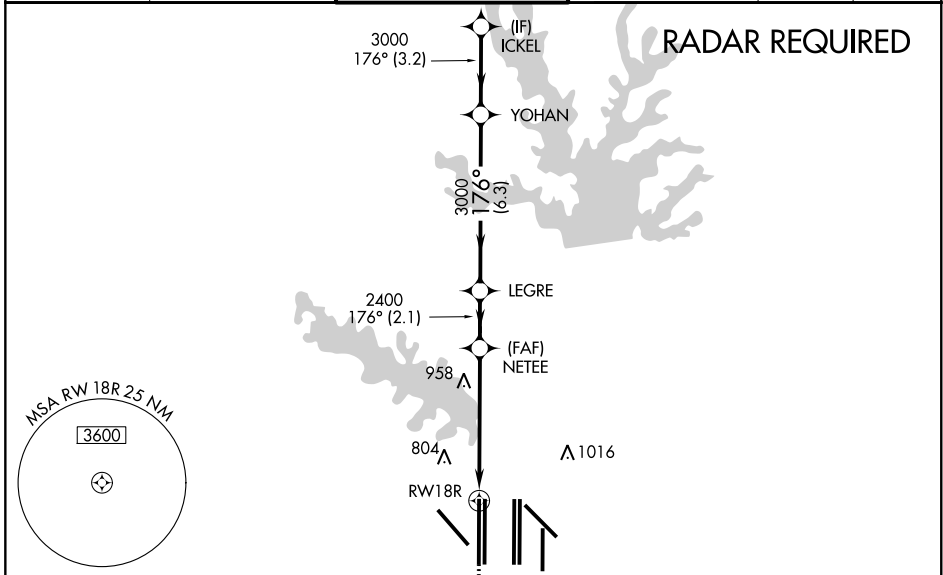
▽ For uncompensated Baro-VNAV systems, LNAV/VNAV NA below -4°C (25°F) or above 54°C (130°F). For inop ALSF, increase LNAV Cat C/D visibility to 1¼ mile. Simultaneous approach authorized with Rwy 17L/C/R. DME/DME RNP-0.3 NA. LNAV procedure NA during simultaneous operations. Use of FD or AP providing RNAV track guidance required during simultaneous operations.

ALSF-2

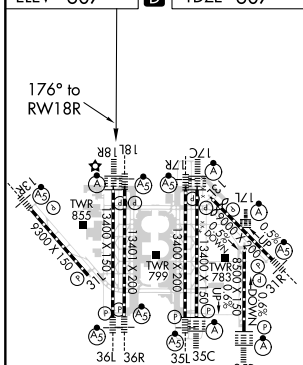


MISSED APPROACH: Climb to 1100 then climbing right turn to 3000 direct LIKES and hold.

D-ATIS ARR 123.775 DEP 135.925	REGIONAL APP CON 118.425	DFW TOWER 126.55 EAST 127.5 EAST 124.15 WEST 134.9 WEST	GND CON 121.65 EAST 121.8 EAST 121.85 WEST	CLNC DEL 128.25	CPDLC
--	------------------------------------	---	--	---------------------------	-------



ELEV 607	D	TDZE 607
----------	----------	----------



CATEGORY	A	B	C	D
LPV DA		807/18	200 (200-½)	
LNAV/VNAV DA		980/40	373 (400-¾)	
LNAV MDA	1220/24	613 (700-½)	1220-1¾	613 (700-1¾)

HIRL all Rwys
REIL Rwys 13L and 31L
TDZ/CL all Rwys except 13L and 31L

SC-2, 25 MAR 2021 to 22 APR 2021

SC-2, 25 MAR 2021 to 22 APR 2021