

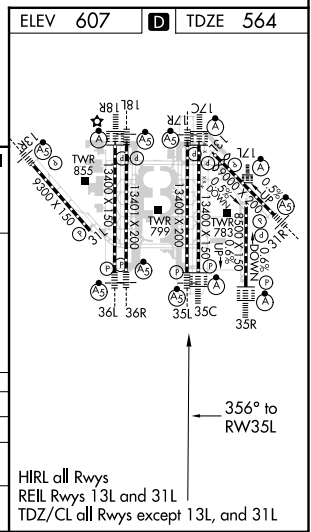
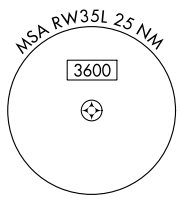
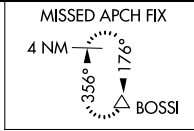
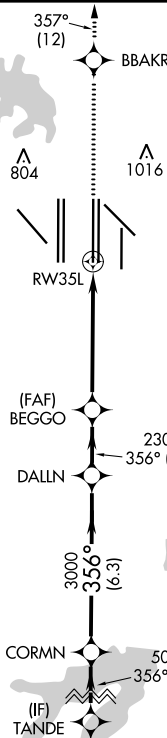
WAAS CH <b>45805</b> <b>W35B</b>	APP CRS <b>356°</b>	Rwy Idg <b>13400</b> TDZE <b>564</b> Apt Elev <b>607</b>
--	------------------------	--

# RNAV (GPS) RWY 35L

DALLAS-FORT WORTH INTL (DFW)

<p><b>▽</b> For uncompensated Baro-VNAV systems, LNAV/VNAV NA below -4°C (25°F) or above 54°C (130°F). Simultaneous approach authorized with Rwy 36L/R and Rwy 35R. DME/DME RNP-0.3 NA. LNAV procedure NA during simultaneous operations. Use of FD or AP providing RNAV track guidance required during simultaneous operations.</p>		<p>MALSRL</p>	<p>MISSED APPROACH: Climb to 3000 direct BBAKR and on track 357° to BOSSI and hold.</p>		
D-ATIS ARR <b>123.775</b> DEP <b>135.925</b>	REGIONAL APP CON <b>127.075</b>	DFW TOWER <b>126.55 127.5</b> EAST <b>124.15 134.9</b> WEST	GND CON <b>121.65 121.8</b> EAST <b>121.85</b> WEST	CLNC DEL <b>128.25</b>	CPDLC

## RADAR REQUIRED



VGSI and RNAV glidepath not coincident (VGSI Angle 3.00/TCH 63).

TANDE	CORMN	DALLN	BEGGO	BBAKR	BOSSI
6000	5000	3000	2300	tr 357°	△
GP 3.00° TCH 47	*LNAV only.				
3.2 NM		6.3 NM	2.4 NM	4.1 NM	1.2
A		B	C	D	
CATEGORY	LPV DA		LNAV/VNAV DA		LNAV MDA
	764/18 200 (200-1/2)		928/40 364 (400-3/4)		1020/24 456 (500-1/2)   1020/45 456 (500-7/8)

SC-2, 25 MAR 2021 to 22 APR 2021

SC-2, 25 MAR 2021 to 22 APR 2021