

# RNAV (RNP) Z RWY 13R

DALLAS-FORT WORTH INTL (DFW)

APP CRS <b>135°</b>	Rwy Idg <b>9300</b>
	TDZE <b>591</b>
	Apt Elev <b>606</b>

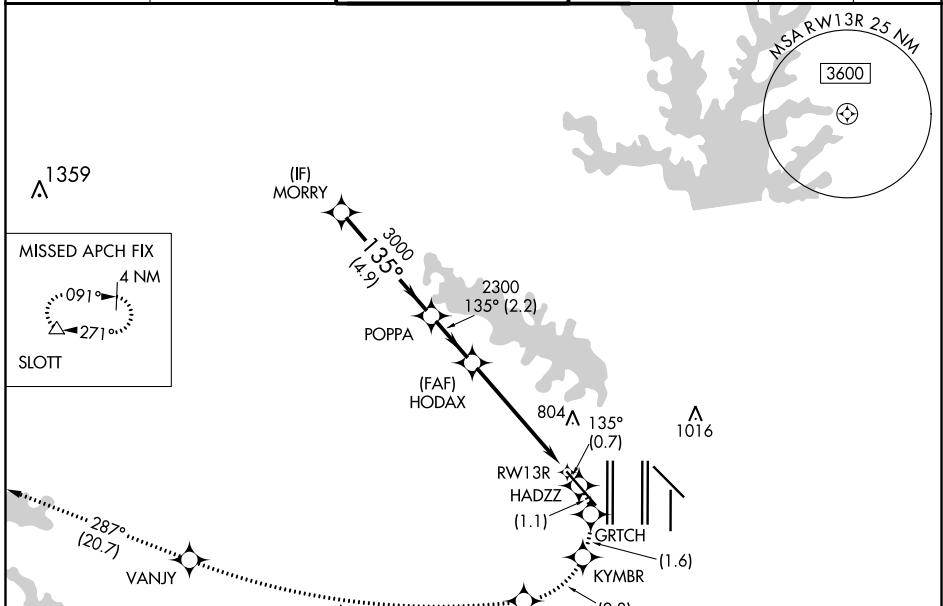
RNP AR APCH. RF required.

**▽** For uncompensated Baro-VNAV systems, procedure NA below -6°C or above 54°C. Missed approach requires RNP less than 1.0.

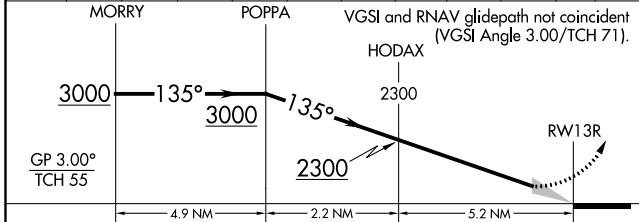
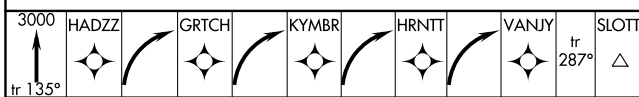
MALSR

MISSED APPROACH: (Do not exceed 185K until HRNTT) Climb to 3000 on the RNAV missed approach route to SLOTT and hold.

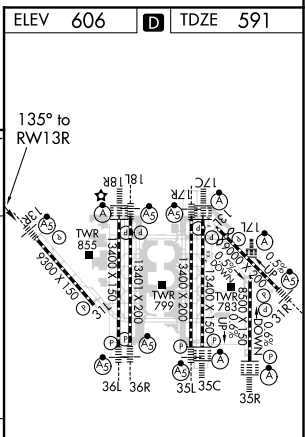
D-ATIS ARR <b>123.775</b> DEP <b>135.925</b>	REGIONAL APP CON <b>133.15 118.1</b>	DFW TOWER <b>126.55 127.5 EAST</b> <b>124.15 134.9 WEST</b>	GND CON <b>121.65 121.8 EAST</b> <b>121.85 WEST</b>	CLNC DEL <b>128.25</b>	CPDLC
--	---	---	---	---------------------------	-------



ELEV 606	<b>D</b>	TDZE 591
----------	----------	----------



CATEGORY	A	B	C	D
RNP 0.30 DA		1041/45	450 (500-7%)	



HIRL all Rwys  
REIL Rwy 13L and 31L  
TDZ/CL all Rwys except 13L and 31L

## AUTHORIZATION REQUIRED

SC-2, 25 MAR 2021 to 22 APR 2021

SC-2, 25 MAR 2021 to 22 APR 2021