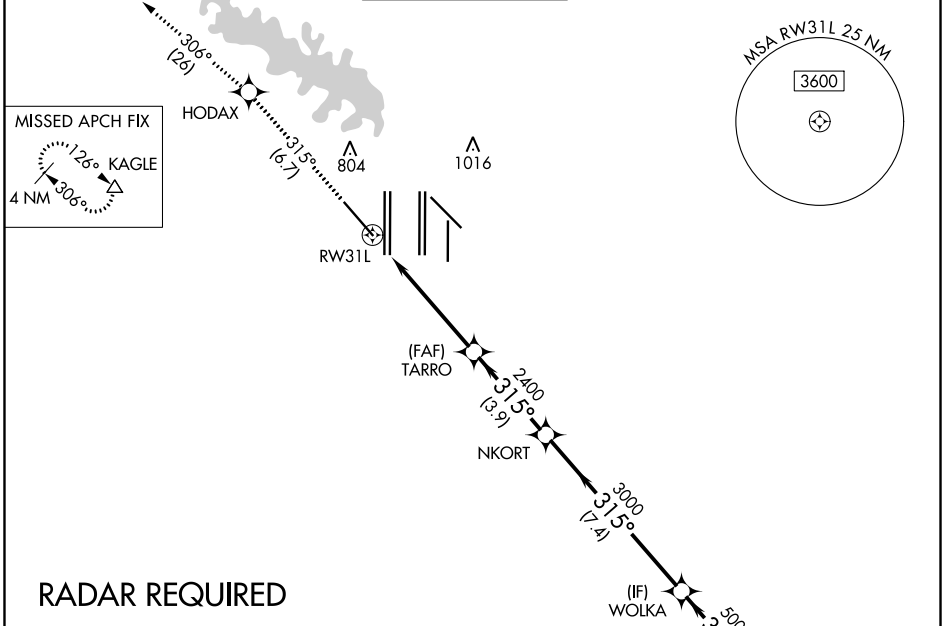


APP CRS 315°	Rwy Idg 9300
	TDZE 581
	Apt Elev 607

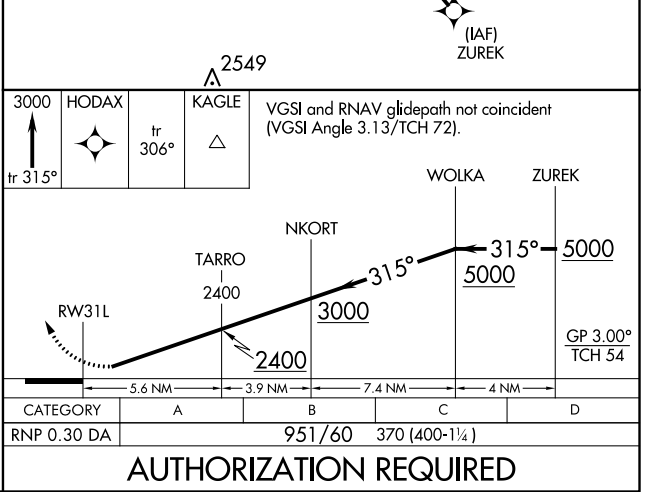
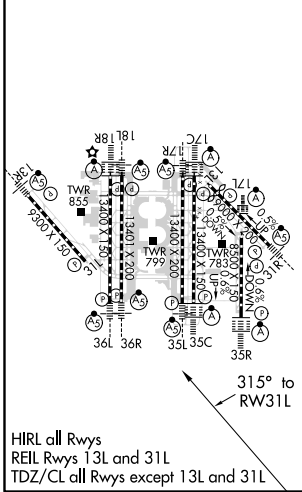
RNAV (RNP) Z RWY 31L

DALLAS-FORT WORTH INTL (DFW)

<p>▼ For uncompensated Baro-VNAV systems, procedure NA below -4°C (25°F) or above 54°C (130°F). Simultaneous approach authorized with Rwy 31R. GPS Required. Use of FD or AP providing RNAV track guidance required during simultaneous operations.</p>				<p>MISSED APPROACH: Climb to 3000 on track 315° to HODAX and on track 306° to KAGLE and hold.</p>		
D-ATIS ARR DEP	REGIONAL APP CON	DFW TOWER	GND CON	CLNC DEL	CPDLC	
123.775 135.925	118.425 127.075 119.4	126.55 127.5 EAST 124.15 134.9 WEST	121.65 121.8 EAST 121.85 WEST	128.25		



ELEV	607	D	TDZE	581
------	-----	----------	------	-----



SC-2, 25 MAR 2021 to 22 APR 2021

SC-2, 25 MAR 2021 to 22 APR 2021