

(BOOVE.SOCKK3) 17117

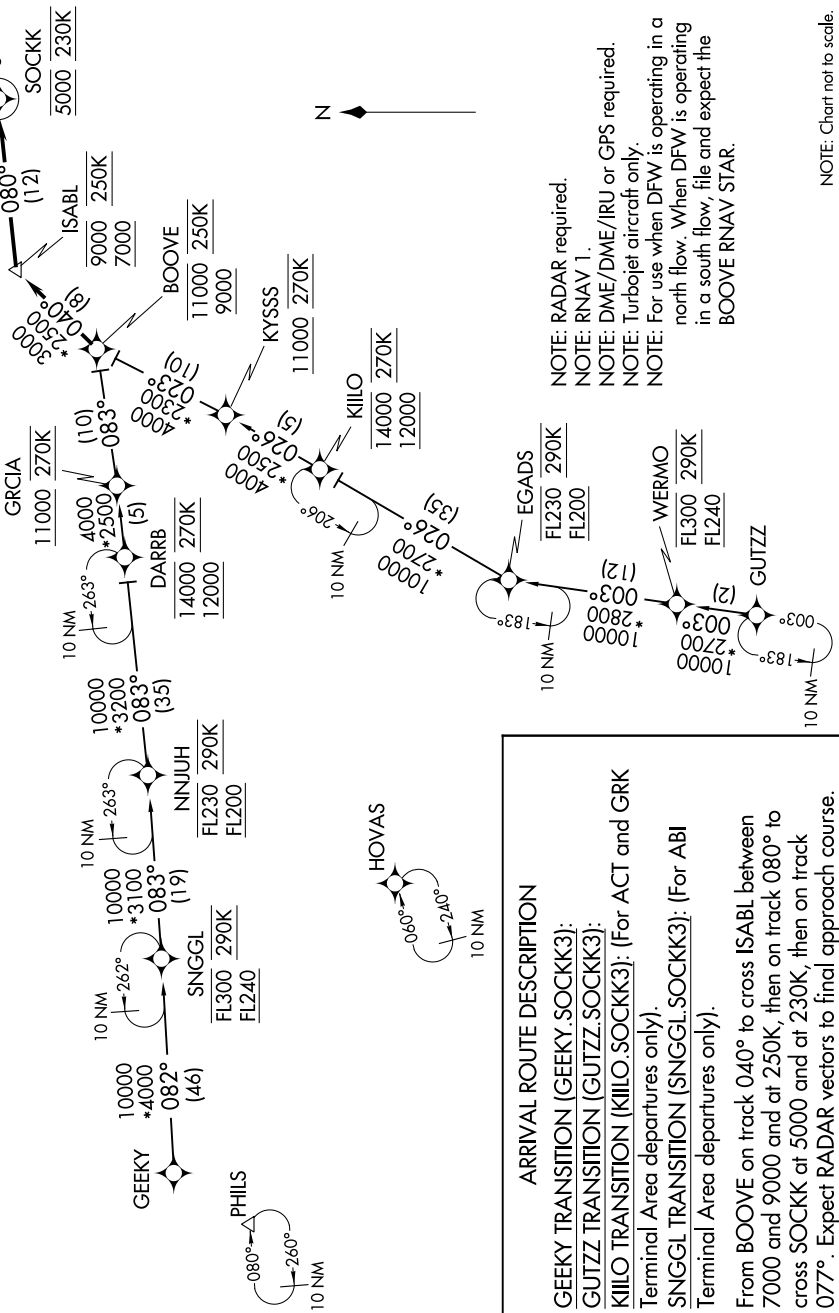
# SOCKK THREE ARRIVAL (RNAV)

AL-6039 (FAA)

DALLAS-FORT WORTH INTL (DFW)  
DALLAS-FORT WORTH, TEXAS

SC-2, 25 MAR 2021 to 22 APR 2021

D-ATIS.ARR  
123.775  
REGIONAL APP CON  
119.875 133.625 284.65



**ARRIVAL ROUTE DESCRIPTION**

**GEEKY TRANSITION (GEEKY.SOCKK3):**  
**GUTZZ TRANSITION (GUTZZ.SOCKK3):**  
**KILLO TRANSITION (KILLO.SOCKK3):** (For ACT and GRK Terminal Area departures only).  
**SNGGL TRANSITION (SNGGL.SOCKK3):** (For ABI Terminal Area departures only).  
 From BOOVE on track 040° to cross ISABL between 7000 and 9000 and at 250K, then on track 080° to cross SOCKK at 5000 and at 230K, then on track 077°. Expect RADAR vectors to final approach course.

**NOTE: RADAR required.**  
**NOTE: RNAV 1.**  
**NOTE: DME/DME/IRU or GPS required.**  
**NOTE: Turbojet aircraft only.**  
**NOTE: For use when DFW is operating in a north flow. When DFW is operating in a south flow, file and expect the BOOVE RNAV STAR.**

NOTE: Chart not to scale.

# SOCKK THREE ARRIVAL (RNAV)

(BOOVE.SOCKK3) 26MAY16

DALLAS-FORT WORTH, TEXAS  
DALLAS-FORT WORTH INTL (DFW)

SC-2, 25 MAR 2021 to 22 APR 2021