


| | | | |
|--|------------------------|-----------------------------|---|
| LOC/DME I-EFE 109.35 Chan 30 (Y) | APP CRS 179° | Rwy Idg TDZE Apt Elev | 7002 576 589 |
|--|------------------------|-----------------------------|---|

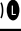
ILS or LOC RWY 18

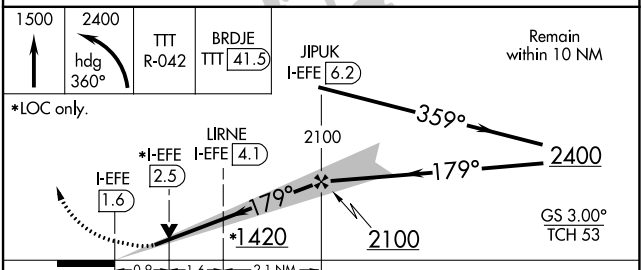
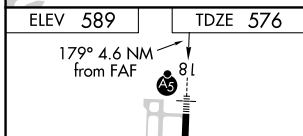
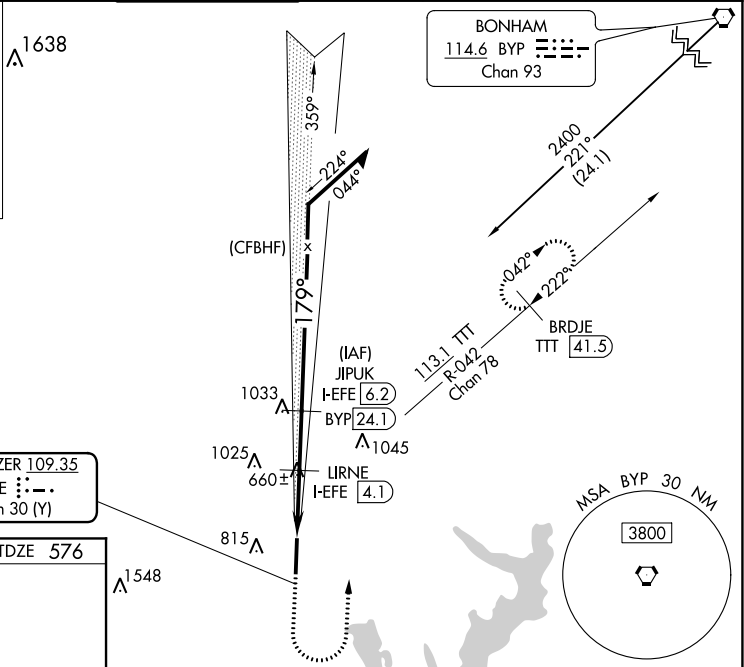
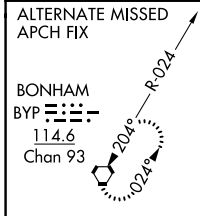
MCKINNEY NATIONAL (TKI)


DME required for procedure entry.
DME required.

▼ VDP NA when using Dallas Love Field altimeter setting. When local altimeter setting not received, use Dallas Love Field altimeter setting and increase all DA 70 feet and all MDA 80 feet, increase S-LOC 18 Cats C/D visibility 1/2 SM, increase Circling visibility Cat C 1/2 SM, Cat D 1/4 SM. For inop ALS, increase S-LOC 18 Cats C/D visibility to 1 SM. For inop ALS when using Dallas Love Field altimeter setting, increase S-ILS 18 all Cats visibility to 1/2 SM and increase S-LOC 18 Cats C/D to 1 1/4 SM.

MALSRL

 MISSED APPROACH:
 Climb to 1500 then climbing left turn to 2400 on heading 360° and on TTT VOR/DME R-042 to BRDJE/TTT 41.5 DME and hold.

| | | | | | |
|------------------------|--|---|---------------------------|--|-------------------------|
| ASOS 119.925 | REGIONAL APP CON 124.3 282.275 | MCKINNEY TOWER ★ 118.825 (CTAF)  | GND CON 121.875 | CLNC DEL 121.35 (When twr closed) | UNICOM 122.95 |
|------------------------|--|---|---------------------------|--|-------------------------|



| CATEGORY | A | B | C | D |
|--|-----------------------|-----------------------|-------------------------------|-------------------------------|
| S-ILS 18 | | 776-1/2 | 200 (200-1/2) | |
| S-LOC 18 | 920-1/2 | 344 (400-1/2) | 920-5/8 | 344 (400-5/8) |
|  CIRCLING | 1040-1 451 (500-1) | 1120-1 531 (600-1) | 1200-1 3/4 611 (700-1 3/4) | 1380-2 1/2 791 (800-2 1/2) |

SC-2, 25 MAR 2021 to 22 APR 2021

SC-2, 25 MAR 2021 to 22 APR 2021