

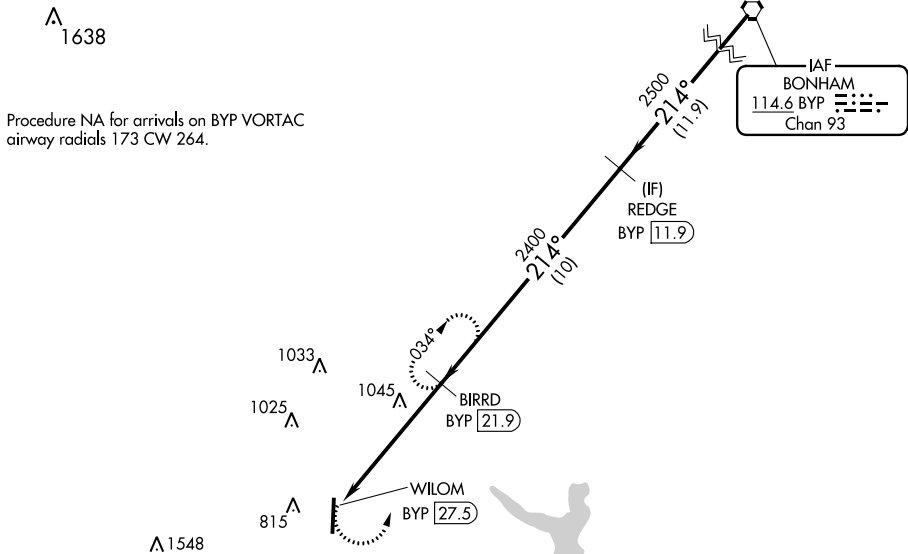
VORTAC BYP <b>114.6</b> Chan <b>93</b>	APP CRS <b>214°</b>	Rwy Idg TDZE Apt Elev <b>589</b>	<b>N/A</b> <b>N/A</b> <b>589</b>
--	------------------------	---	--

**VOR/DME-A**  
MCKINNEY NATIONAL (TKI)

When local altimeter setting not received use Dallas Love Field altimeter setting and increase all MDA 80 feet and Cats C and D visibility 1/4 mile.

MISSED APPROACH: Climbing left turn to 2400 on BYP VORTAC R-214 to BIRRD/BYP 21.9 DME and hold.

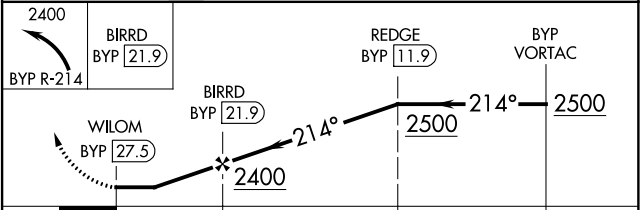
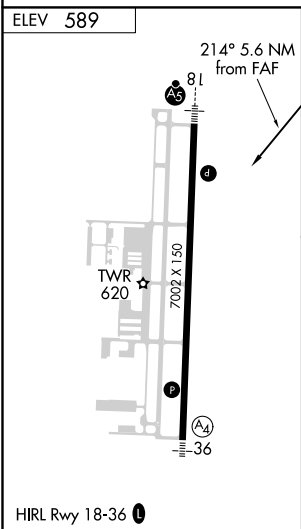
ASOS <b>119.925</b>	REGIONAL APP CON <b>124.3 282.275</b>	MCKINNEY TOWER ★ <b>118.825</b> (CTAF) <b>0</b>	GND CON <b>121.875</b>	CLNC DEL <b>121.35</b> (When twr closed)	UNICOM <b>122.95</b>
------------------------	--	--	---------------------------	--	-------------------------



IAF  
BONHAM  
114.6 BYP  
Chan 93

SC-2, 25 MAR 2021 to 22 APR 2021

SC-2, 25 MAR 2021 to 22 APR 2021



CATEGORY	A	B	C	D
<b>CIRCLING</b>	1360-1 771 (800-1)	1360-1¼ 771 (800-1¼)	1360-2¼ 771 (800-2¼)	1380-2½ 791 (800-2½)