

WAAS Ch 70440 W16A	APP CRS 158°	Rwy Idg TDZE 1023 Apt Elev 1023	4099
--	------------------------	---	-------------

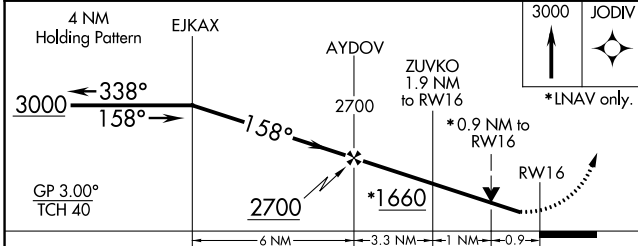
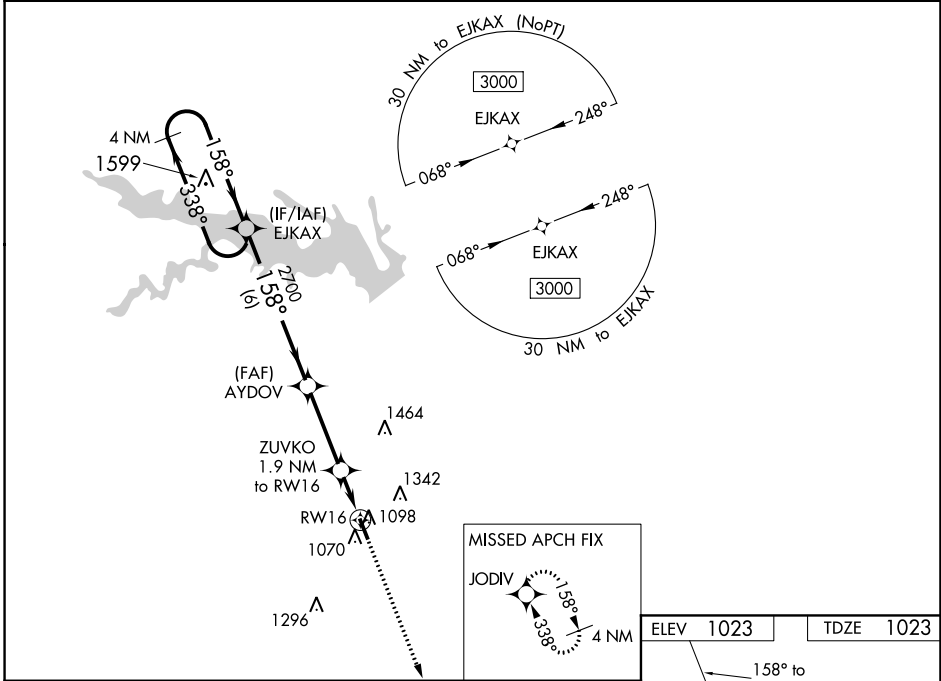
RNAV (GPS) RWY 16

CENTERVILLE MUNI (TVK)

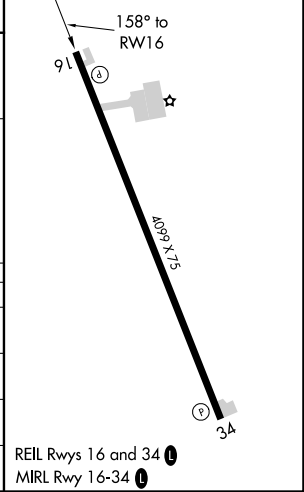
⚠ For uncompensated Baro-VNAV systems, LNAV/VNAV NA below -17°C (2°F) or above 54°C (130°F). DME/DME RNP-0.3 NA. Rwy 16 helicopter visibility reduction below ¾ SM NA. Baro-VNAV and VDP NA when using Chariton altimeter setting. When local altimeter setting not received, use Chariton altimeter setting and increase all DA 71 feet and all visibilities ¼ SM and all MDA 80 feet.

MISSED APPROACH: Climb to 3000 direct JODIV and hold.

AWOS-3 123.775	CHICAGO CENTER 118.15 335.575	UNICOM 122.8 (CTAF) 0
--------------------------	---	---------------------------------



ELEV 1023	TDZE 1023
-----------	-----------



CATEGORY	A	B	C	D
LPV DA	1273-1	250 (300-1)		NA
LNAV/ DA VNAV	1273-1	250 (300-1)		NA
LNAV MDA	1360-1	337 (400-1)		NA
C CIRCLING	1420-1 397 (400-1)	1480-1 457 (500-1)		NA

NC-3, 25 MAR 2021 to 22 APR 2021

NC-3, 25 MAR 2021 to 22 APR 2021