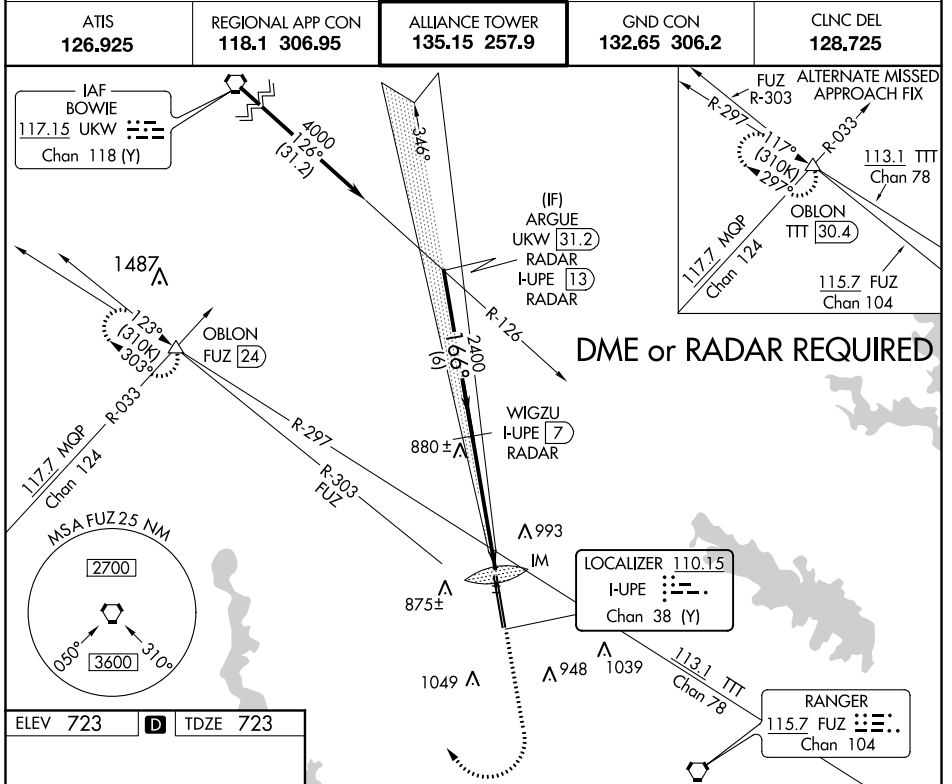


LOC/DME I-UIPE 110.15 Chan 38 (Y)	APP CRS 166°	Rwy Idg 10600 TDZE 723 Apt Elev 723
---	------------------------	--

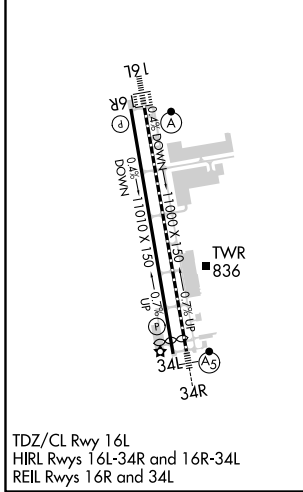
ILS RWY 16L (CAT II & III)

FORT WORTH ALLIANCE (AFW)

	MISSED APPROACH: Climb to 1200 then climbing right turn to 3000 on heading 330° and FUZ VORTAC R-303 to OBLON INT/FUZ 24 DME and hold.			
	ATIS 126.925	REGIONAL APP CON 118.1 306.95	ALLIANCE TOWER 135.15 257.9	GND CON 132.65 306.2



ELEV 723	D	TDZE 723
----------	----------	----------



TDZ/CL Rwy 16L
HIRL Rwys 16L-34R and 16R-34L
REIL Rwys 16R and 34L

ARGUE I-UIPE 13 RADAR	WIGZU I-UIPE 7 RADAR	1200	3000	OBLON
4000 — 166° — 2400 GS 3.00° TCH 55		↑ hdg 330° FUZ R-303	IM 797	
6 NM		5.1 NM		1049'
CATEGORY	A	B	C	D
S-ILS 16L	CAT II RA 101/12		100 DA 823	
S-ILS 16L	CAT III		RVR 06	

CATEGORY II & III ILS - SPECIAL AIRCREW & AIRCRAFT CERTIFICATION REQUIRED

SC-2, 25 MAR 2021 to 22 APR 2021

SC-2, 25 MAR 2021 to 22 APR 2021