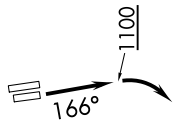


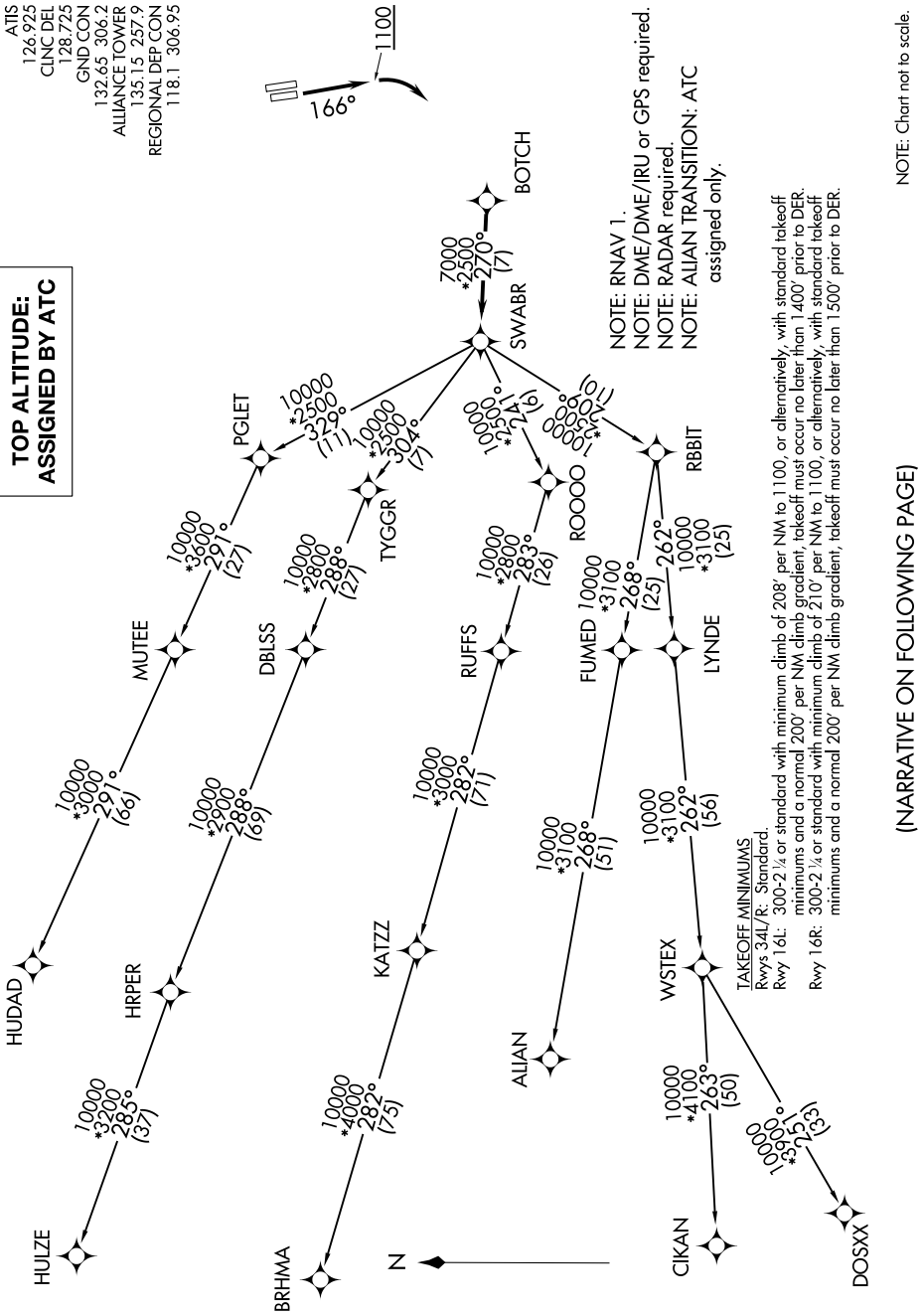
# SWABR SEVEN DEPARTURE (RNAV)

FORT WORTH, TEXAS

ATIS  
126.925  
CINC DEL  
128.725  
GND CON  
132.65 306.2  
ALLIANCE TOWER  
135.15 257.9  
REGIONAL DEP CON  
118.1 306.95



## TOP ALTITUDE: ASSIGNED BY ATC



NOTE: RNAV 1.  
NOTE: DME/DME/IRU or GPS required.  
NOTE: RADAR required.  
NOTE: ALIAN TRANSITION: ATC assigned only.

**TAKEOFF MINIMUMS**  
Rwy 34L/R: Standard.  
Rwy 16L: 300-2 1/4 or standard with minimum climb of 208' per NM to 1100, or alternatively, with standard takeoff minimums and a normal 200' per NM climb gradient, takeoff must occur no later than 1400' prior to DER.  
Rwy 16R: 300-2 1/4 or standard with minimum climb of 210' per NM to 1100, or alternatively, with standard takeoff minimums and a normal 200' per NM climb gradient, takeoff must occur no later than 1500' prior to DER.

NOTE: Chart not to scale.

(NARRATIVE ON FOLLOWING PAGE)