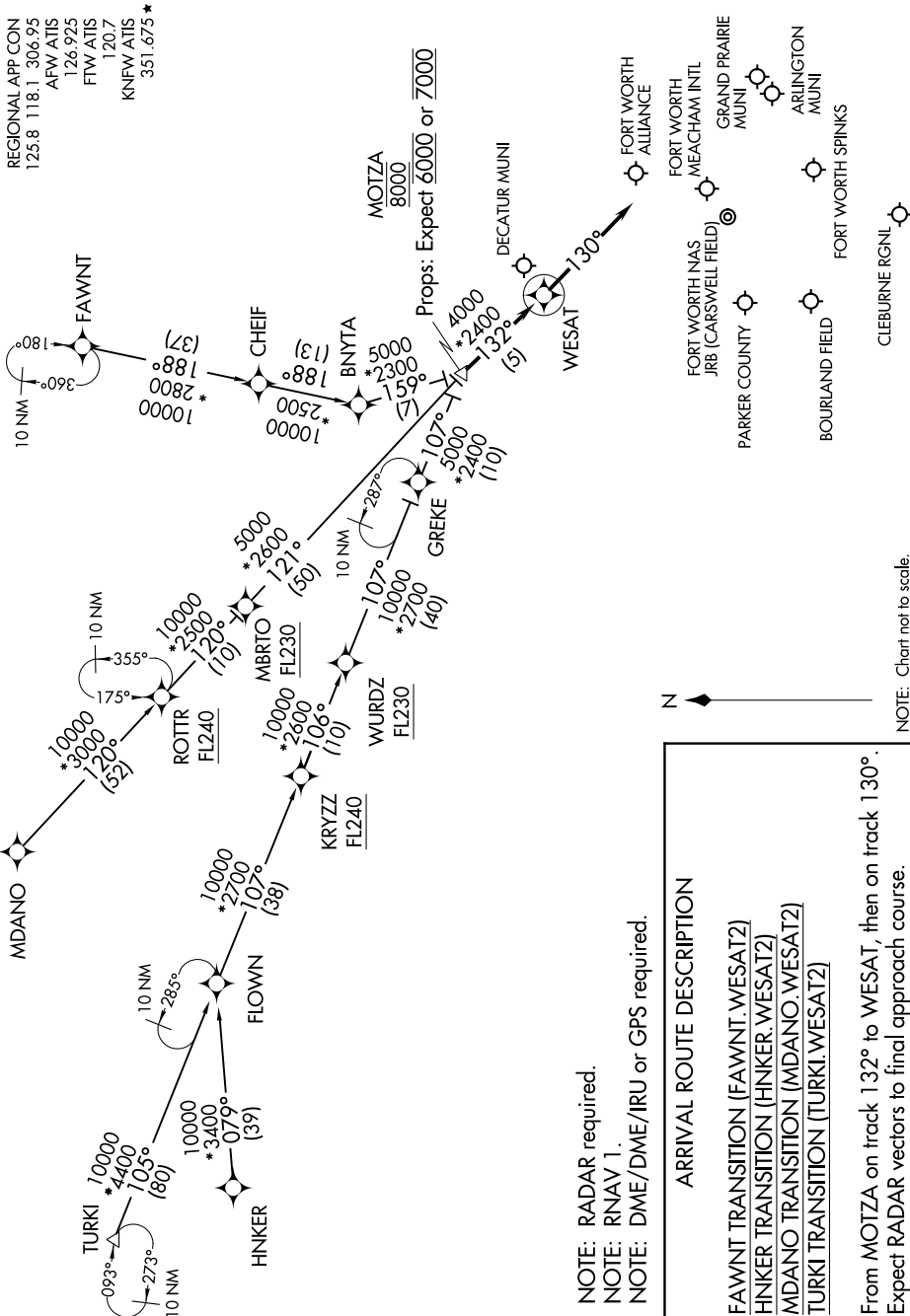


WESAT TWO ARRIVAL (RNAV)

DALLAS-FORT WORTH, TEXAS



REGIONAL APP CON
125.8 118.1 306.95
AFW ATIS
126.925
FTW ATIS
120.7
KNFW ATIS
351.675 *

- NOTE: RADAR required.
- NOTE: RNAV 1.
- NOTE: DME/DME/IRU or GPS required.

ARRIVAL ROUTE DESCRIPTION

FAWNT TRANSITION (FAWNT.WESAT2)
HNKER TRANSITION (HNKER.WESAT2)
MDANO TRANSITION (MDANO.WESAT2)
TURKI TRANSITION (TURKI.WESAT2)

From MOTZA on track 132° to WESAT, then on track 130°. Expect RADAR vectors to final approach course.

NOTE: Chart not to scale.

SC-2, 25 MAR 2021 to 22 APR 2021

SC-2, 25 MAR 2021 to 22 APR 2021

WESAT TWO ARRIVAL (RNAV)

(MOTZA.WESAT2) 25JUN15

DALLAS-FORT WORTH, TEXAS