

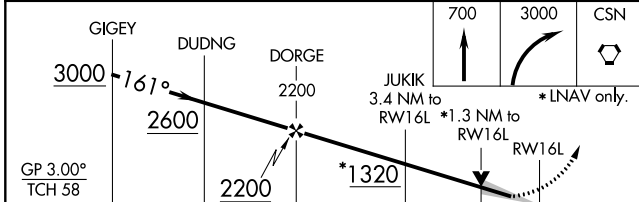
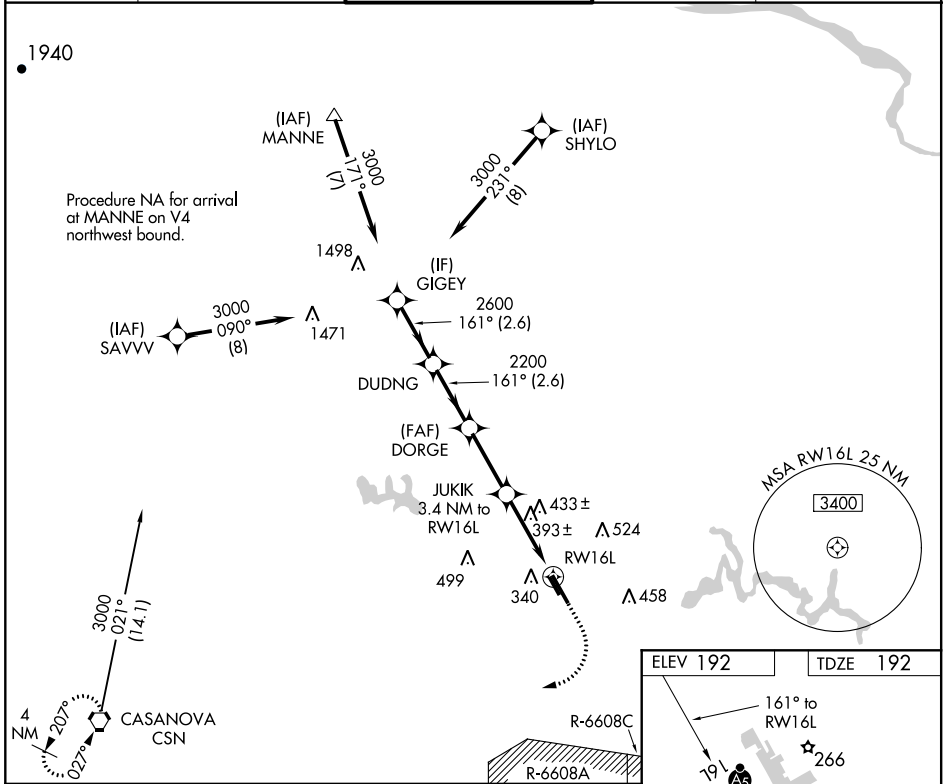
WAAS CH 70302 W16A	APP CRS 161°	Rwy ldg TDZE 192 Apt Elev 192
--	------------------------	---

RNAV (GPS) RWY 16L

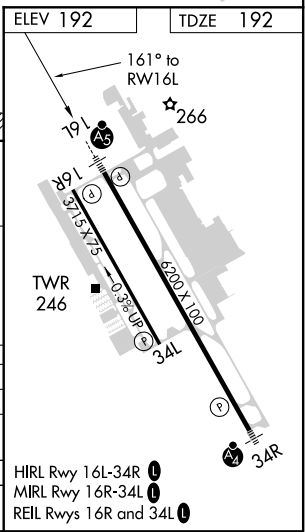
MANASSAS RGNL/HARRY P DAVIS FLD (HEF)

RNP APCH. RADAR required.	MALSR	MISSED APPROACH: Climb to 700 then climbing right turn to 3000 direct CSN VORTAC and hold.
▽ For uncompensated Baro-VNAV systems, LNAV/VNAV NA below -15°C or above 54°C. For inop ALS, increase LNAV Cat C/D visibility to 1 3/8 SM.	AS	

ATIS 125.175	POTOMAC APP CON 128.525 306.925	MANASSAS TOWER ★ 133.1 (CTAF) 360.75	GND CON 121.8	CLNC DEL 120.2
------------------------	---	--	-------------------------	--------------------------



CATEGORY	A	B	C	D
LPV DA		442-1/2	250 (300-1/2)	
LNAV/VNAV DA		635-1	443 (500-1)	
LNAV MDA	660-1/2	468 (500-1/2)	660-1	468 (500-1)
C CIRCLING	720-1 528 (600-1)	740-1 548 (600-1)	840-1 3/4 648 (700-1 3/4)	880-2 1/4 688 (700-2 1/4)



NE-3, 22 APR 2021 to 20 MAY 2021

NE-3, 22 APR 2021 to 20 MAY 2021