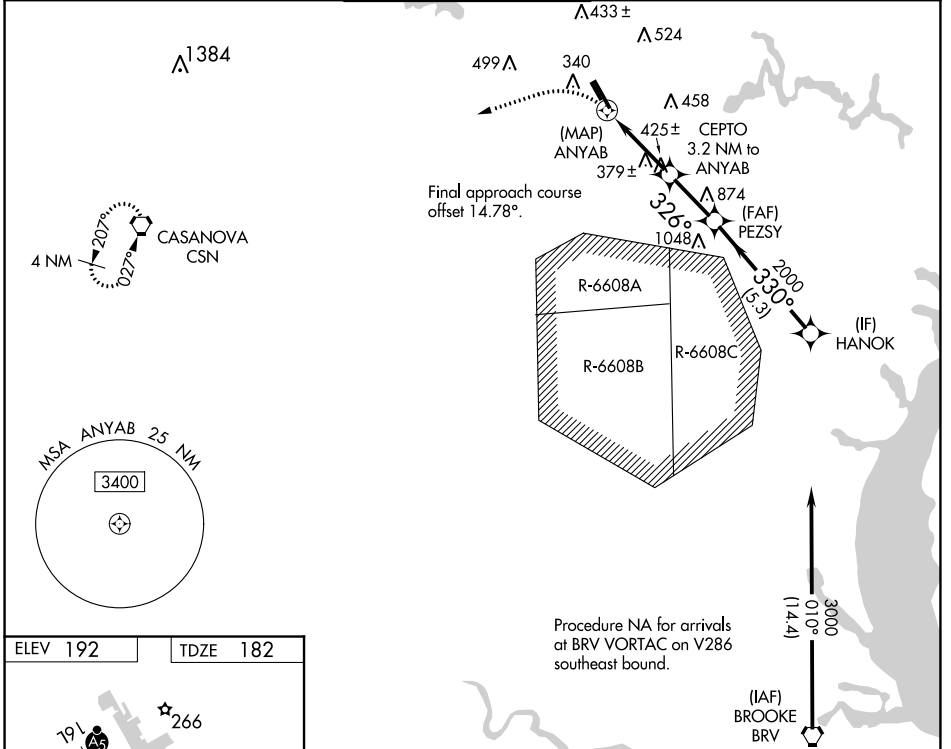


WAAS CH <b>56239</b> <b>W34B</b>	APP CRS <b>326°</b>	Rwy Idg <b>3715</b> TDZE <b>182</b> Apt Elev <b>192</b>
--	------------------------	---

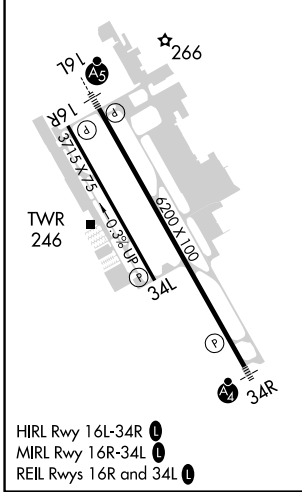
# RNAV (GPS) RWY 34L

MANASSAS RGNL/HARRY P DAVIS FLD (HEF)

<p><b>⚠</b> DME/DME RNP-0.3 NA. When local altimeter setting not received, use Washington Dulles Intl altimeter setting and increase all MDA 60 feet; increase LNAV Cat C/D and Circling Cat C and D visibility 1/4 mile. Helicopter visibility reduction below 3/4 SM NA.</p>		<p><b>MISSED APPROACH:</b> Climbing left turn to 3000 direct CSN VORTAC and hold.</p>		
ATIS <b>125.175</b>	POTOMAC APP CON <b>128.525 306.925</b>	<b>MANASSAS TOWER ★</b> <b>133.1 (CTAF) 360.75</b>	GND CON <b>121.8</b>	CLNC DEL <b>120.2</b>



ELEV 192	TDZE 182
----------	----------



3000	CSN	VGSI and descent angles not coincident (VGSI Angle 3.00/TCH 40).	HANOK		
<p>CEPTO 3.2 NM to ANYAB</p> <p>0.9 NM to ANYAB</p> <p>ANYAB</p> <p>1260 <math>\leq 2.79^\circ</math> TCH 40</p>		PEZSY	3000		
<p>0.4</p>		0.9	2.4 NM	2.3 NM	5.3 NM
CATEGORY	A	B	C	D	
LP MDA	640-1	458 (500-1)	640-1 3/8	458 (500-1 3/8)	
LNAV MDA	680-1	498 (500-1)	680-1 3/8	498 (500-1 3/8)	
<b>C</b> CIRCLING	720-1 528 (600-1)	740-1 548 (600-1)	840-1 3/4 648 (700-1 3/4)	880-2 1/4 688 (700-2 1/4)	

NE-3, 22 APR 2021 to 20 MAY 2021

NE-3, 22 APR 2021 to 20 MAY 2021