

WAAS CH 93931 W18A	APP CRS 179°	Rwy Idg TDZE 682 Apt Elev 684	3899
--	------------------------	---	-------------

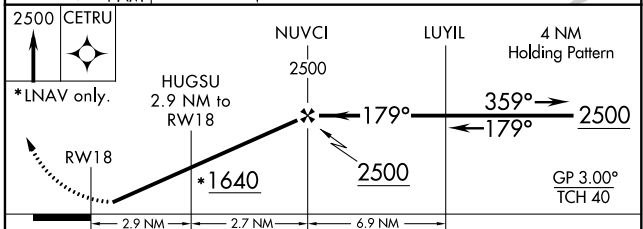
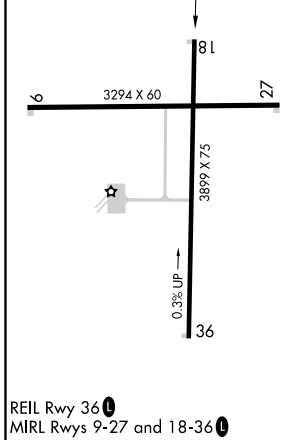
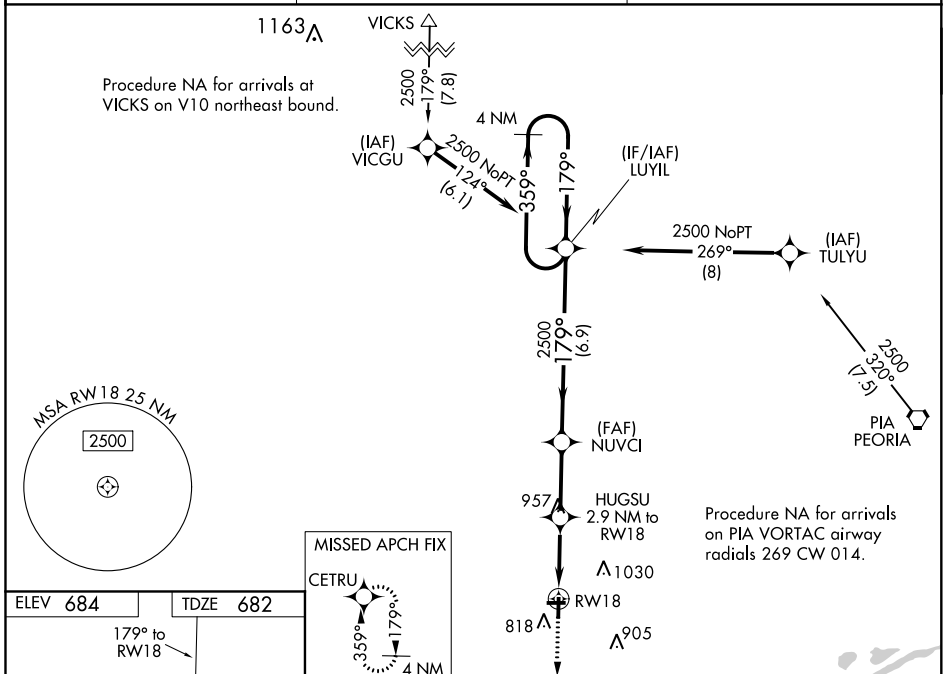
RNAV (GPS) RWY 18

INGERSOLL (CTK)

⚠ Baro-VNAV NA when using General Downring-Peoria Intl altimeter setting. DME/DME RNP-0.3 NA. When local altimeter not received use General Downring-Peoria Intl altimeter setting and increase all DA 46 feet and all MDA 60 feet; increase LNAV/VNAV all Cats visibility 1/8 mile and LNAV and Circling Cat C visibility 1/4 mile. Helicopter visibility reduction below 1 SM NA. Rwy 18 Straight-In and Circling and Rwy 9, 27 Circling NA at night. For uncompensated Baro-VNAV, LNAV/VNAV NA below -16°C (4°F) or above 54°C (130°F).

MISSED APPROACH:
Climb to 2500 direct CETRU and hold.

AWOS-A 122.8	PEORIA APP CON 124.675 269.2	UNICOM 122.8 (CTAF) 0
------------------------	--	---------------------------------



CATEGORY	A	B	C	D
LPV DA	949-1	267 (300-1)		NA
LNAV/VNAV DA	1082-1 ³ / ₈	400 (400-1 ³ / ₈)		NA
LNAV MDA	1220-1	538 (600-1)	1220-1 ¹ / ₂ 538 (600-1 ¹ / ₂)	NA
CIRCLING	1220-1 536 (600-1)	1380-1 696 (700-1)	1380-2 696 (700-2)	NA

EC-3, 22 APR 2021 to 20 MAY 2021

EC-3, 22 APR 2021 to 20 MAY 2021