

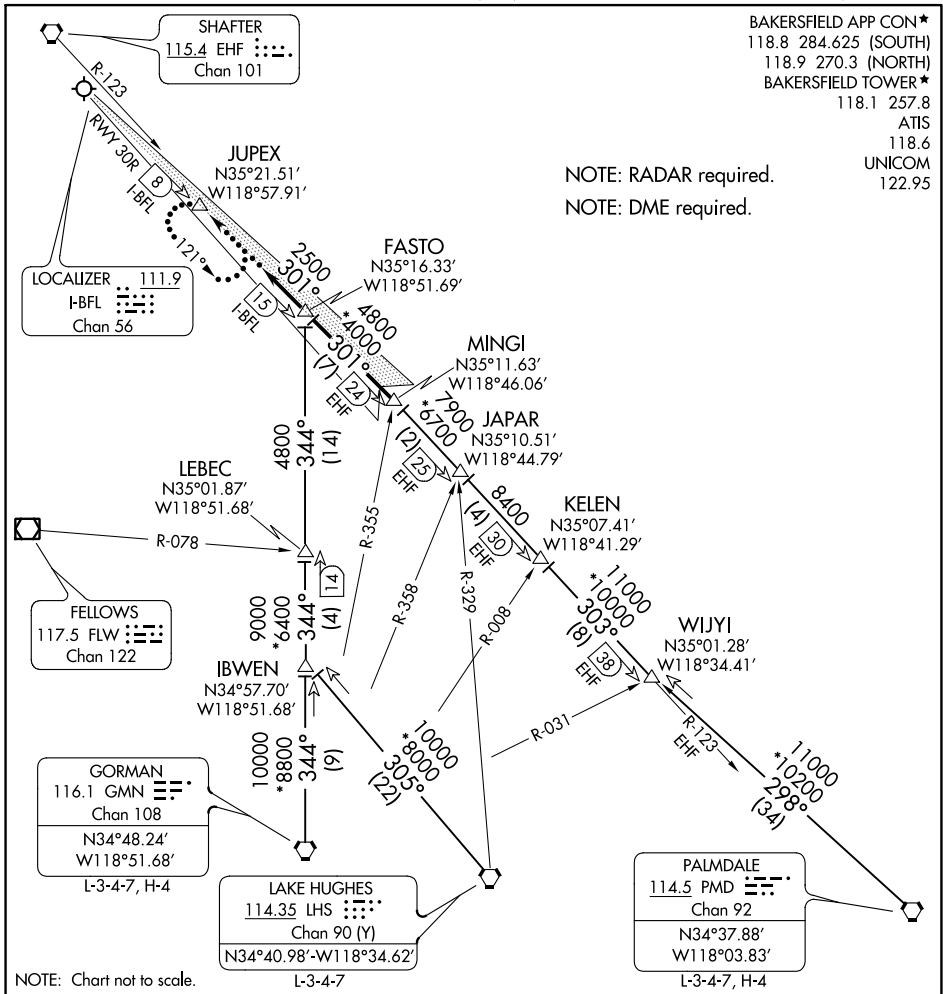
(FASTO.FASTO2) 21112  
**FASTO TWO ARRIVAL**

AL-36 (FAA)

MEADOWS FLD (BFL)  
 BAKERSFIELD, CALIFORNIA

BAKERSFIELD APP CON\*  
 118.8 284.625 (SOUTH)  
 118.9 270.3 (NORTH)  
 BAKERSFIELD TOWER\*  
 118.1 257.8  
 ATIS  
 118.6  
 UNICOM  
 122.95

NOTE: RADAR required.  
 NOTE: DME required.



SW-3, 09 SEP 2021 to 07 OCT 2021

SW-3, 09 SEP 2021 to 07 OCT 2021

NOTE: Chart not to scale.

**ARRIVAL ROUTE DESCRIPTION**

**GORMAN TRANSITION (GMN.FASTO2):** From over GMN VORTAC on GMN R-344 to FASTO INT. Thence . . . .

**LAKE HUGHES TRANSITION (LHS.FASTO2):** From over LHS VORTAC on LHS R-305 and GMN R-344 to FASTO INT. Thence . . . .

**PALMDALE TRANSITION (PMD.FASTO2):** From over PMD VORTAC on PMD R-298 and EHF R-123 to MINGI INT, then on I-BFL LOC course to FASTO INT. Thence . . . .

. . . . From over FASTO INT on the I-BFL Localizer for the ILS or LOC RWY 30R procedure.

**LOST COMMUNICATIONS:** From FASTO INT direct to JUPEX INT maintain 2500; intercept and execute ILS or LOC RWY 30R approach. If unable, proceed to JUPEX INT and hold and maintain 2500.

**FASTO TWO ARRIVAL**  
 (FASTO.FASTO2) 05JAN17

BAKERSFIELD, CALIFORNIA  
 MEADOWS FLD (BFL)