

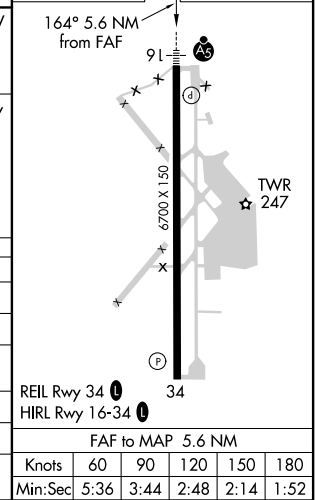
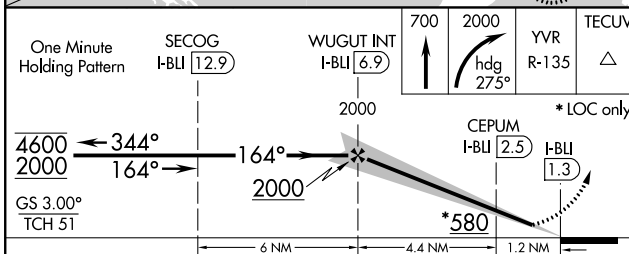
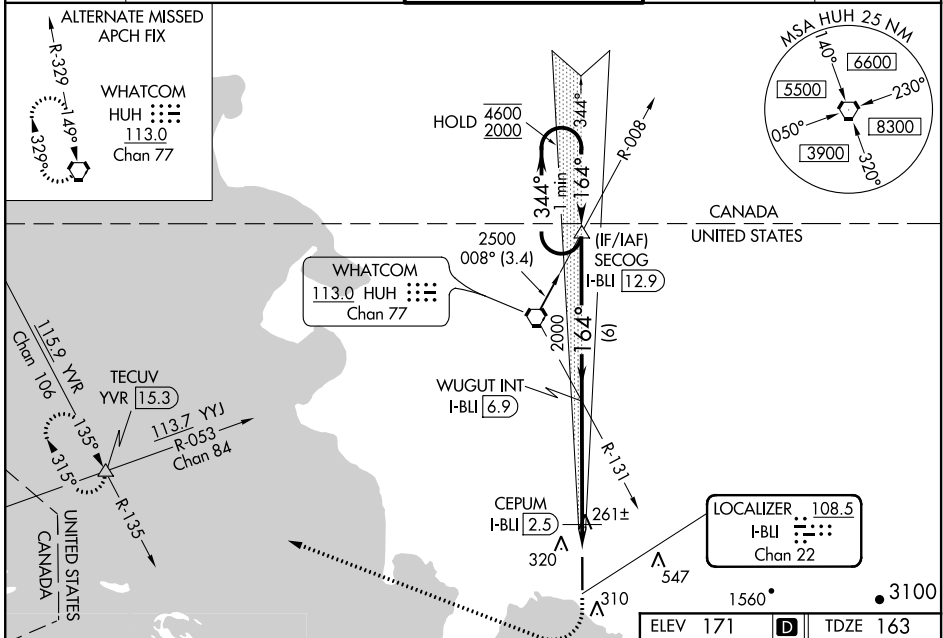
LOC/DME I-BLI <b>108.5</b> Chan 22	APP CRS <b>164°</b>	Rwy Idg TDZE Apt Elev	<b>6700</b> <b>163</b> <b>171</b>
--	------------------------	-----------------------------	---

# ILS or LOC RWY 16

BELLINGHAM INTL (BLI)

DME or RADAR required.	MALSR	MISSED APPROACH: Climb to 700 then climbing right turn to 2000 on heading 275° and on YVR VOR/DME R-135 to TECUV INT/YVR 15.3 DME and hold.
<p>▲ For inop ALS, increase S-LOC Cat C/D visibility to RVR 6000 and CEPUM fix minimums S-LOC 16 Cat C/D to RVR 5500. # RVR 1800 authorized with use of FD or AP or HUD to DA.</p>		

ATIS <b>134.45</b>	VICTORIA TERMINAL APP CON <b>132.7 290.8</b>	BELLINGHAM TOWER ★ <b>124.9 (CTAF) 379.3</b>	GND CON <b>127.4 379.3</b>	UNICOM <b>122.95</b>
-----------------------	---	---	-------------------------------	-------------------------



CATEGORY	A	B	C	D
S-ILS 16#	363/24 200 (200-½)			
S-LOC 16	580/24	417 (500-½)	580/40	417 (500-¾)
CIRCLING	640-1	469 (500-1)	900-2 729 (800-2)	1160-3 989 (1000-3)
CEPUM FIX MINIMUMS (DME REQUIRED)				
S-LOC 16	520/24	357 (400-½)	520/30	357 (400-¾)
CIRCLING	640-1	469 (500-1)	900-2 729 (800-2)	1160-3 989 (1000-3)

NW-1, 09 SEP 2021 to 07 OCT 2021

NW-1, 09 SEP 2021 to 07 OCT 2021