

WAAS CH 86223 W34A	APP CRS 344°	Rwy Idg TDZE 170 Apt Elev 170	6700
--	------------------------	---	-------------

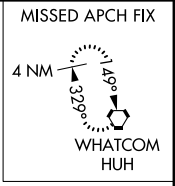
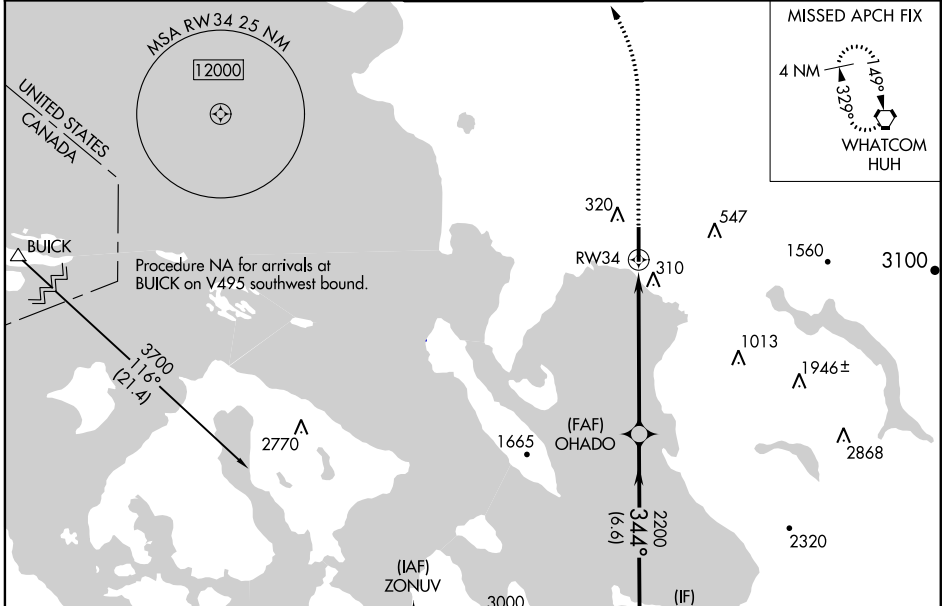
RNAV (GPS) Y RWY 34

BELLINGHAM INTL (BLI)

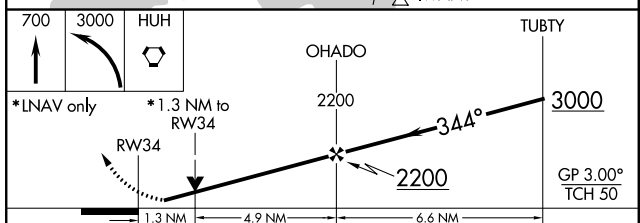
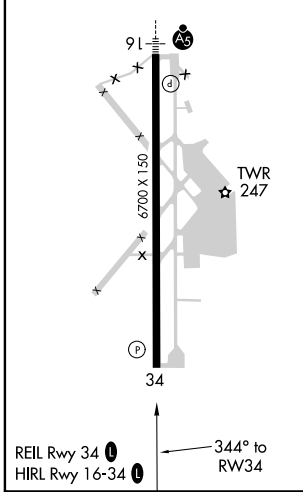
⚠ For uncompensated Baro-VNAV systems, LNAV/VNAV NA below -10°C (14°F) or above 54°C (130°F). DME/DME RNP-0.3 NA. Baro-VNAV and VDP NA when using Friday Harbor altimeter setting. When local altimeter setting not received, use Friday Harbor altimeter setting and increase all DAs 67 feet and all MDA 80 feet; increase LPV all Cats visibility, LNAV/VNAV all Cats visibility, LNAV Cats C/D and Circling Cat C 1/4 mile. Helicopter visibility reduction below 3/4 SM NA.

MISSED APPROACH: Climb to 700 then climbing left turn to 3000 direct HUH VORTAC and hold, continue climb-in-hold to 3000.

ATIS 134.45	VICTORIA TERMINAL APP CON 132.7 290.8	BELLINGHAM TOWER ★ 124.9 (CTAF) 0 379.3	GND CON 127.4 379.3	UNICOM 122.95
-----------------------	---	---	-------------------------------	-------------------------



ELEV 170	D	TDZE 170
----------	----------	----------



CATEGORY	A	B	C	D
LPV DA		420-3/4	250 (300-3/4)	
LNAV/VNAV DA		502-1 1/8	332 (400-1 1/8)	
LNAV MDA	640-1	470 (500-1)	640-1 3/8	470 (500-1 3/8)
C CIRCLING	640-1	470 (500-1)	900-2 730 (800-2)	1160-3 990 (1000-3)

NW-1, 09 SEP 2021 to 07 OCT 2021

NW-1, 09 SEP 2021 to 07 OCT 2021