

LOC/DME I-BOI <b>111.1</b> Chan 48	APP CRS <b>102°</b>	Rwy Idg TDZE Apt Elev	10R <b>9763</b> <b>2836</b> <b>2871</b>	10L <b>10000</b> <b>2844</b> <b>2871</b>
--	------------------------	-----------------------------	--	---

# ILS Y or LOC Y RWY 10R

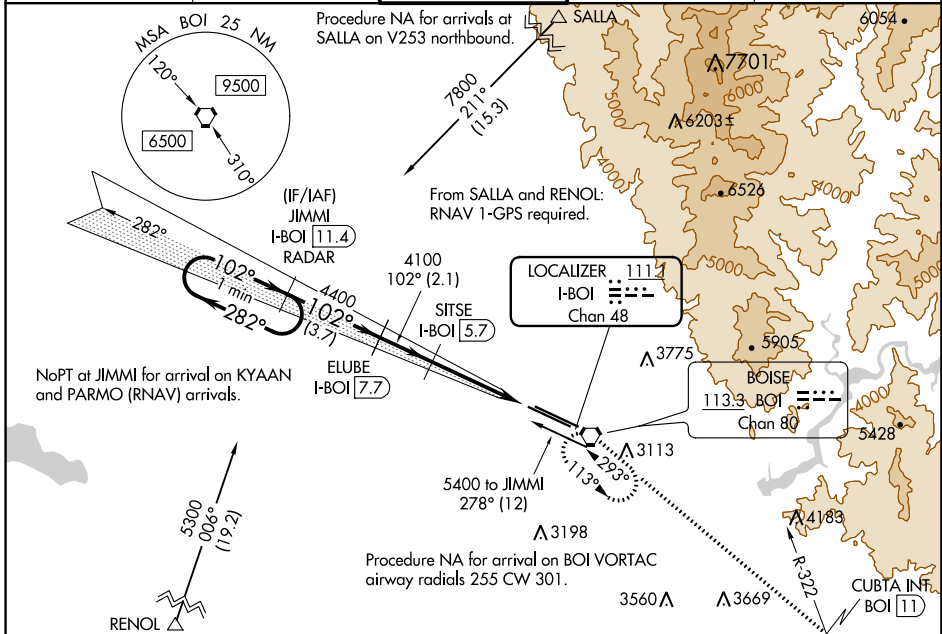
BOISE AIR TRML/GOWEN FLD (BOI)

**⚠** Circling NA north of Rwy 10L-28R. DME required.  
For inop ALS, increase S-LOC 10R Cats C/D visibility to RVR 5500.

ALSF-2 Rwy 10R

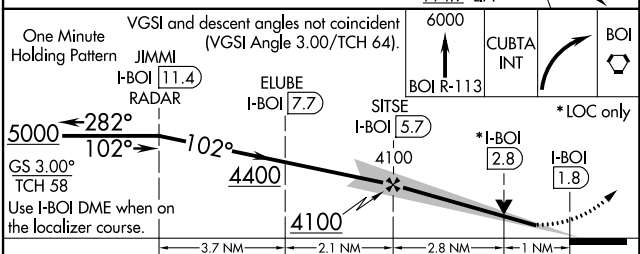
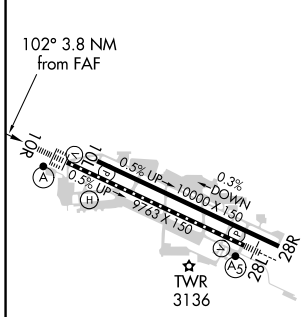
**MISSED APPROACH:** Climb to 6000 on BOI VORTAC R-113 to CUBTA INT/BOI VORTAC 11 DME and right turn direct BOI VORTAC and hold.

D-ATIS <b>123.9 290.4</b>	BIG SKY APP CON <b>119.6 269.4</b>	<b>BOISE TOWER</b> <b>118.1 257.8</b>	GND CON <b>121.7 348.6</b>	CLNC DEL <b>125.9 323.2</b>
------------------------------	---------------------------------------	--	-------------------------------	--------------------------------



ELEV 2871	<b>D</b> TDZE 10R 2836
	TDZE 10L 2844

## RADAR or DME REQUIRED



CATEGORY	A	B	C	D
S-ILS 10R	3036/18		200 (200-½)	
S-LOC 10R	3200/24	364 (400-½)	3200/35	364 (400-¾)
SIDESTEP 10L	3220-1	376 (400-1)	3220-1½ 376 (400-1½)	3220-2 376 (400-2)
<b>C</b> CIRCLING	3440-1	569 (600-1)	3740-2½ 869 (900-2½)	3820-3 949 (1000-3)

REIL Rwy 10L  
TDZ/CL Rws 10R and 28L  
HIRL Rws 10L-28R and 10R-28L

NW-1, 09 SEP 2021 to 07 OCT 2021

NW-1, 09 SEP 2021 to 07 OCT 2021