

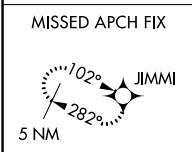
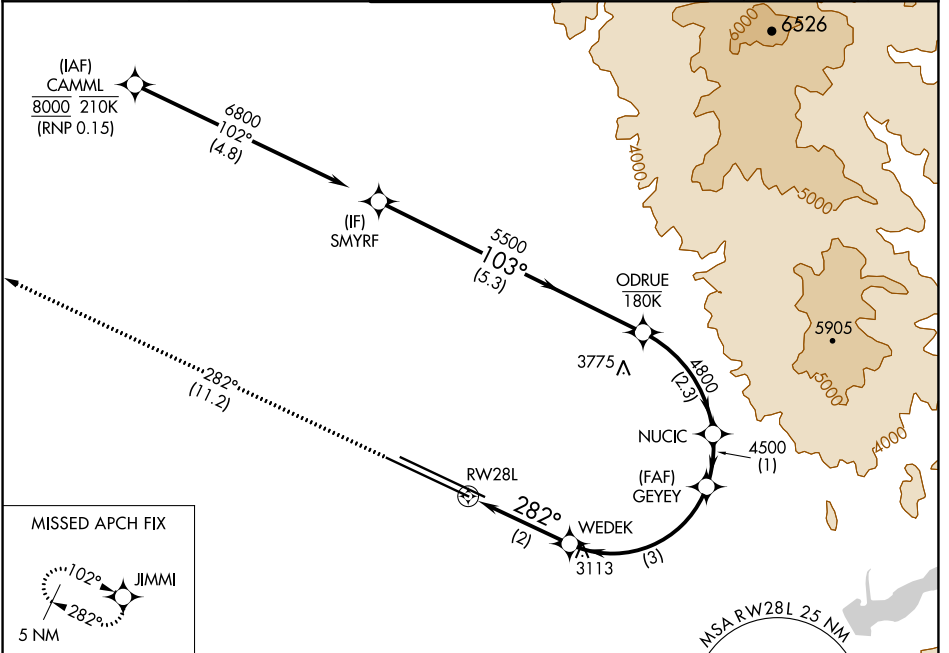
APP CRS	Rwy Idg	<b>9763</b>
<b>282°</b>	TDZE	<b>2858</b>
	Apt Elev	<b>2871</b>

# RNAV (RNP) X RWY 28L

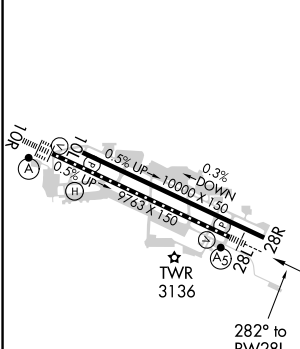
BOISE AIR TRML/GOWEN FLD (BOI)

 	For uncompensated Baro-VNAV systems, procedure NA below -1.4°C (7°F) or above 53°C (128°F). RF required. GPS required.	MALSR 	MISSED APPROACH: Climb to 6000 on track 282° to JIMMI and hold, continue climb-in-hold to 6000.

D-ATIS	BIG SKY APP CON	BOISE TOWER	GND CON	CLNC DEL
<b>123.9 290.4</b>	<b>119.6 269.4</b>	<b>118.1 257.8</b>	<b>121.7 348.6</b>	<b>125.9 323.2</b>



ELEV 2871	<b>D</b>	TDZE 2858
-----------	----------	-----------



6000	JIMMI	WEDEK	GEYEE	NUCIC	ODRUE	SMYRF
↑	fr 282°	3548	4500	4800	5500	6800
		2 NM	3 NM	1 NM	2.3 NM	5.3 NM
CATEGORY RNP 0.15 DA	A	B	C	D		
	3276/47		418 (500-1)			

REL Rwy 10L  
 TDZ/CL Rws 10R and 28L  
 HIRL Rws 10L-28R and 10R-28L

BOISE, IDAHO  
 Orig-A 07DEC17

43°34'N-116°13'W

## AUTHORIZATION REQUIRED

BOISE AIR TRML/GOWEN FLD (BOI)  
 RNAV (RNP) X RWY 28L

NW-1, 09 SEP 2021 to 07 OCT 2021

NW-1, 09 SEP 2021 to 07 OCT 2021