

WAAS CH <b>45724</b> W17A	APP CRS <b>166°</b>	Rwy Idg TDZE Apt Elev	<b>5502</b> <b>4759</b> <b>4759</b>
---------------------------------	------------------------	-----------------------------	---

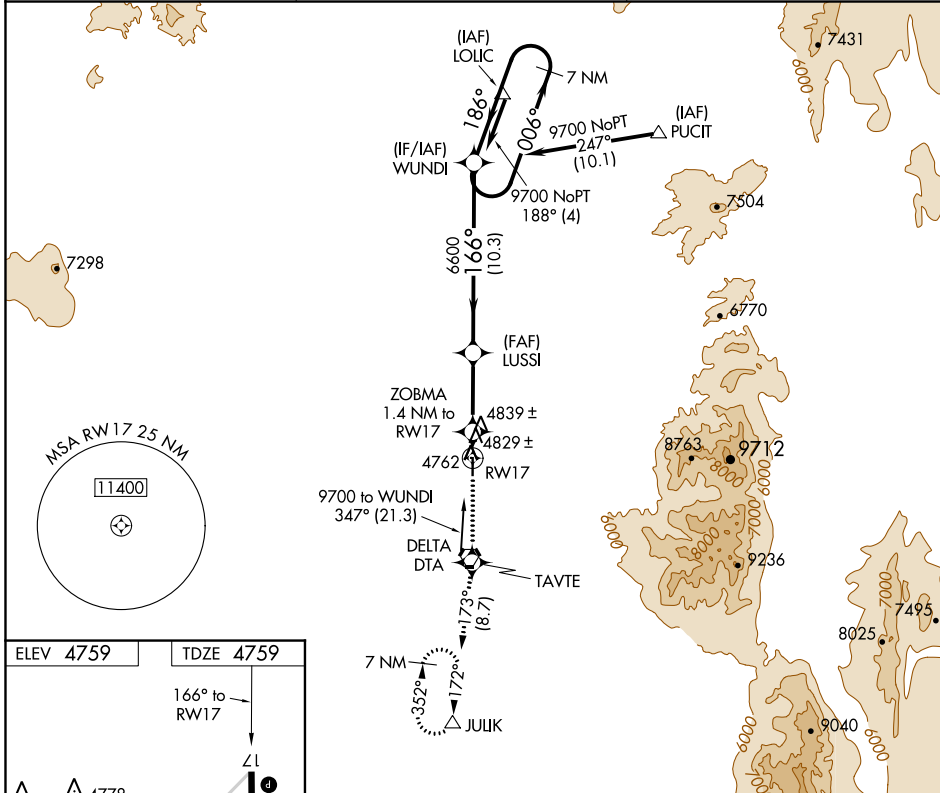
# RNAV (GPS) RWY 17

DELTA MUNI (DTA)

RNP APCH.  
 ▼ Rwy 17 helicopter visibility reduction below 3/4 SM NA.  
 ▲ NA When local altimeter setting not received, procedure NA.

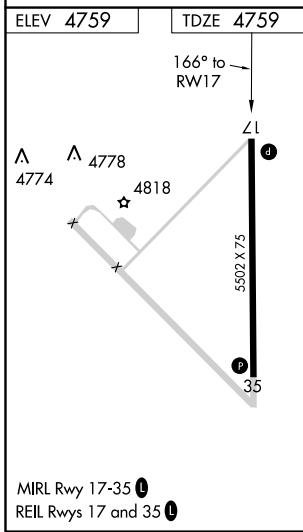
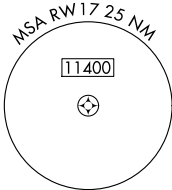
MISSED APPROACH: Climb to 12000 direct TAVTE and on track 173° to JULIK and hold, continue climb-in-hold to 12000.

AWOS-3 <b>127.75</b>	SALT LAKE CENTER <b>127.825 239.025</b>	UNICOM <b>122.8 (CTAF) 0</b>
-------------------------	--	---------------------------------



SW-4, 09 SEP 2021 to 07 OCT 2021

SW-4, 09 SEP 2021 to 07 OCT 2021



12000	TAVTE	JULIK	VGSI and descent angles not coincident (VGSI Angle 3.00/TCH 31).
↑	✦	tr 173°	7 NM Holding Pattern WUNDI
ZOBMA 1.4 NM to RWY 17		LUSI	9700
≤ 3.00° TCH 40		6600	006° →
5240		166°	← 186°
-1.4 NM - 4.3 NM		-10.3 NM	
CATEGORY	A	B	C
LP MDA	5080-1 321 (400-1)		
LNAV MDA	5100-1 341 (400-1)		