

RNAV (GPS) RWY 22

APCH CRS	Rwy Idg	13.554
216°	TDZE	3947
	Arprt Elev	3947

AL-133 [USA]

BIGGS AAF (KBIF)

RNP APCH.

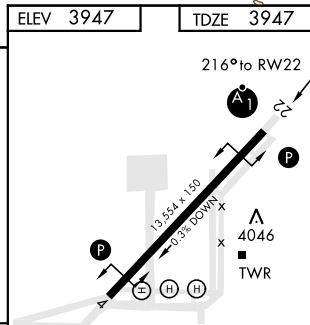
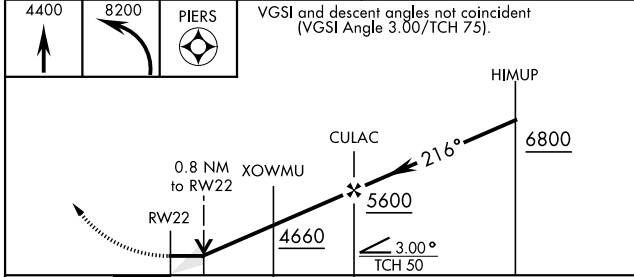
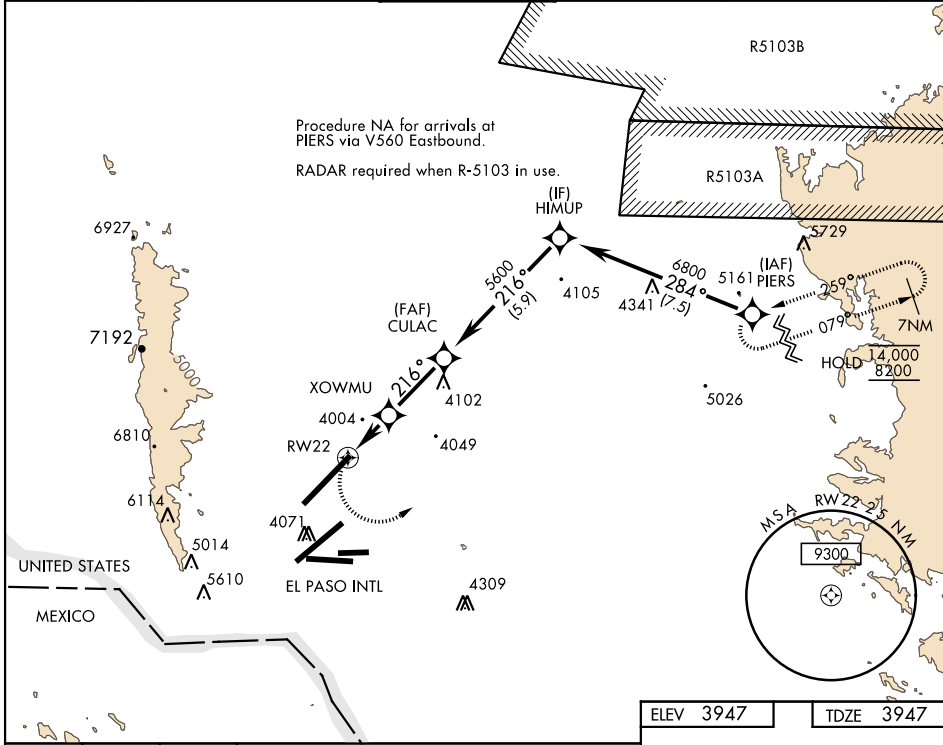
- ▼ * When ALS inop, increase CAT AB vis to 1 mile, CAT CD vis to 1/2 mile.
- ▲ ** Circling NA for CAT D West of Rwy 4-22.

ALSF-1



MISSED APPROACH: Climb to 4400 then climbing left turn to 8200 direct PIERS and hold, continue climb-in-hold to 8200.

ATIS	EL PASO APP CON	TOWER *	GND CON	EL PASO CLNC DEL	ASR
120.0 254.3	119.15 353.5 S of V16 124.25 298.85 N of V16	127.9 0 342.25	121.6 251.125	125.0 379.1	



ELEV	3947	TDZE	3947	
CATEGORY	A	B	C	D
LNNAV MDA *	4260-3/4	313	(400-3/4)	
CIRCLING **	4400-1	453 (500-1)	4540-1 1/2 593 (600-1 1/2)	4540-2 593 (600-2)

RNAV (GPS) RWY 22

SC-3, 09 SEP 2021 to 07 OCT 2021

SC-3, 09 SEP 2021 to 07 OCT 2021