

FORT BLISS, TEXAS

VOR or TACAN RWY 22

BIGGS AAF (KBIF)

EWM VORTAC 112.4 Chan 71	APCH CRS 210°	Rwy Idg 13,554 TDZE 3947 Arprt Elev 3947
--	-------------------------	--

AL-133 [USA]

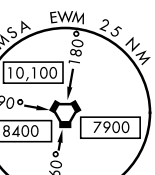
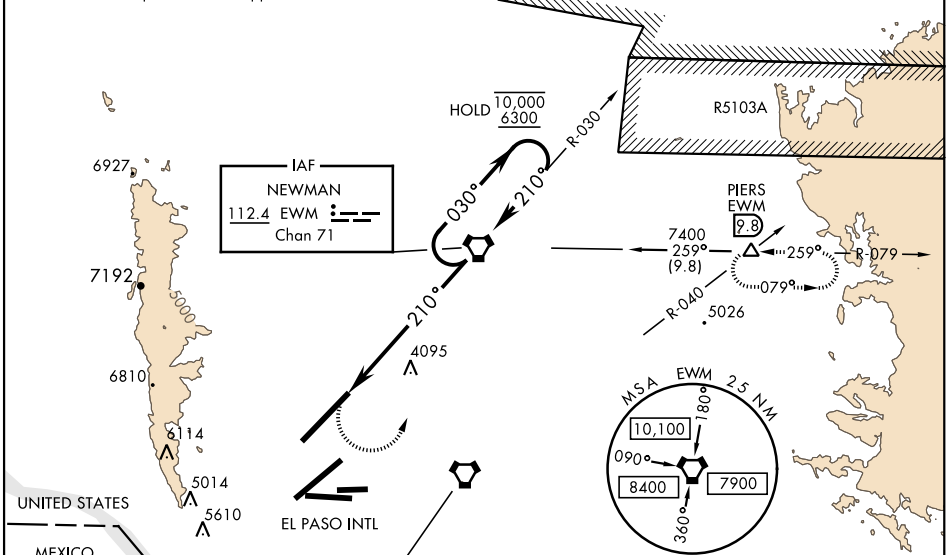
Use El Paso Intl altimeter setting.
 * When ALS inop, increase CAT E vis to 3 miles.
 ** When ALS inop, increase CAT AB vis to 1 mile and CAT CDE to 1/2 miles.



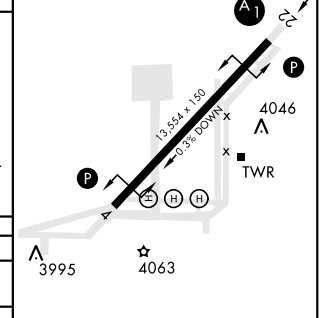
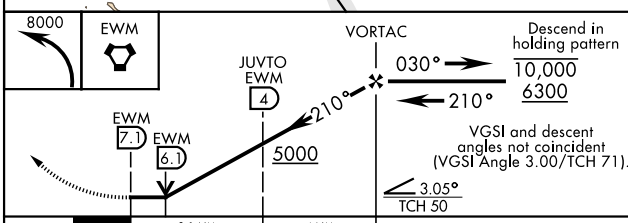
MISSED APPROACH: Climbing left turn to 8000 direct EWM VORTAC and hold, continue climb-in-hold to 8000. [TACAN only aircraft continue on EWM R-079 to PIERS INT/ EWM 9.8 DME and hold, continue climb-in-hold to 8200].

ATIS 120.0 254.3	EL PASO APP CON S of V16 119.15 353.5 N of V16 124.25 298.85	TOWER ★ 127.9 0 342.25	GND CON 121.6 251.125	EL PASO CLNC DEL 125.0 379.1	ASR
----------------------------	--	----------------------------------	---------------------------------	--	-----

*** Circling CAT DE NA W of Rwy 3-21.
 TACAN only equipped a/cf.
 Final apch from holding pattern NA.
 RADAR vectors required to final approach course.



ELEV 3947	TDZE 3947
-----------	-----------



CATEGORY	A	B	C	D	E
S-22*	5000-3/4 1053(1100-3/4)	5000-1 1053(1100-1)	5000-2 1/2	1053	(1100-2 1/2)
*** CIRCLING	5000-1 1/4 1053(1100-1 1/4)	5000-1 1/2 1053(1100-1 1/2)	5000-3	1053	(1100-3)
JUWTO FIX MINIMUMS					
S-22**	4360-3/4		413	(500-3/4)	
*** CIRCLING	4400-1	453 (500-1)	4540-1 1/2 593(600-1 1/2)	4540-2	593 (600-2)

HIRL Rwy 4-22	REL Rwys 4 and 22				
FAF to MAP 7.1 NM					
Knots	60	90	120	150	180
Min:Sec	7:06	4:44	3:33	2:50	2:22

FORT BLISS, TEXAS
Amdt 8A 16JUL20

31° 51' N-106° 23' W

BIGGS AAF (KBIF)

VOR or TACAN RWY 22

SC-3, 09 SEP 2021 to 07 OCT 2021

SC-3, 09 SEP 2021 to 07 OCT 2021