

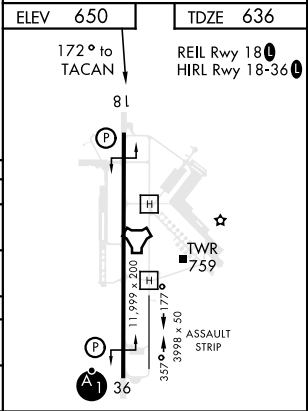
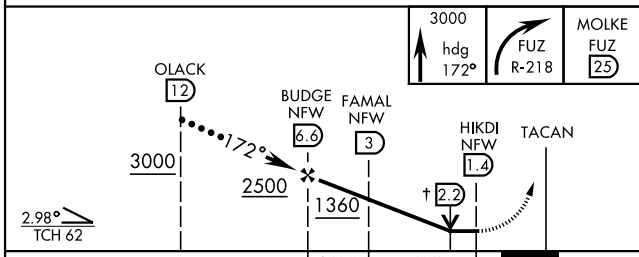
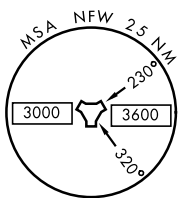
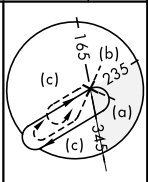
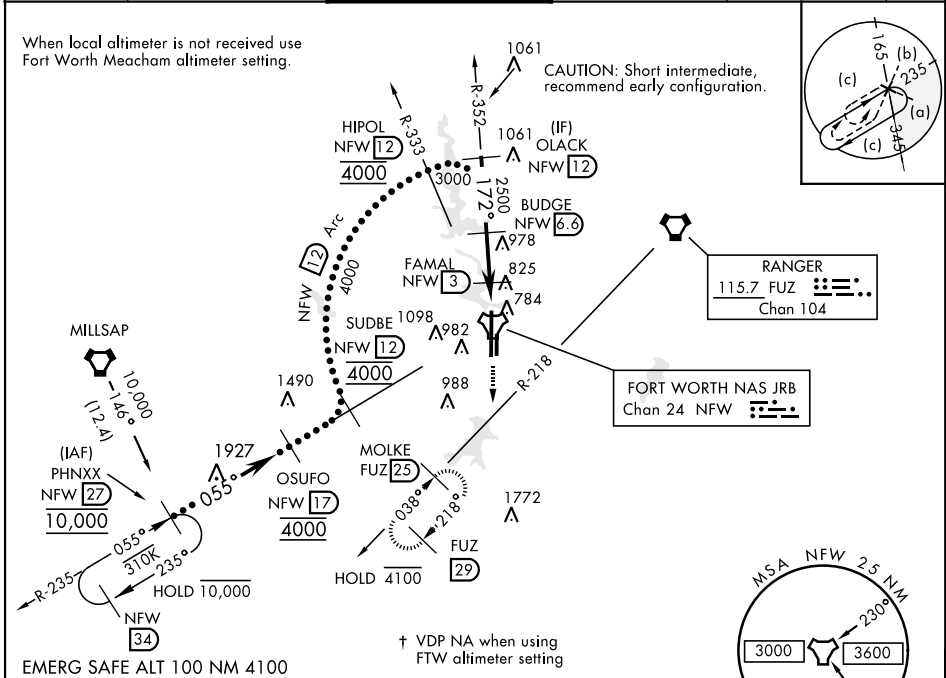
HI-TACAN RWY 18

TACAN NFW Chan 24	APCH CRS 172°	Rwy Idg 11,999 TDZE 636 Arpt Elev 650	AL-160 [USN]	FORT WORTH NAS JRB (CARSWELL FLD) (KNFW)
-----------------------------	-------------------------	--	--------------	--

▼ * Circling not authorized E of Rwy 18-36.

MISSED APPROACH: Climb to 3000 heading 172° and FUZ VORTAC R-218 to MOLKE and hold.

ATIS* 351.675	REGIONAL APP CON 125.8 257.95	NAVY FORT WORTH TOWER* 120.950 269.325	GND CON 121.675 279.575	CLNC DEL 126.4 254.325	ASR/PAR
-------------------------	---	--	-----------------------------------	----------------------------------	---------



CATEGORY	C	D	E
S-18	1120-1 ³ / ₈	484	(500-1 ³ / ₈)
CIRCLING*	1320-1 ³ / ₄ 670 (700-1 ³ / ₄)	1320-2 670 (700-2)	1440-2 ³ / ₄ 790 (800-2 ³ / ₄)
FORT WORTH MEACHAM ALTIMETER			
S-18	1140-1 ³ / ₈	504	(500-1 ³ / ₈)
CIRCLING*	1340-2 690 (700-1)	1340-2 ¹ / ₄ 690 (700-2 ¹ / ₄)	1460-2 ³ / ₄ 810 (900-2 ³ / ₄)

FORT WORTH, TEXAS 32°46'N-97°26'W FORT WORTH NAS JRB (CARSWELL FLD) (KNFW)

Amtd 1 18JUN20

HI-TACAN RWY 18

SC-2, 09 SEP 2021 to 07 OCT 2021

SC-2, 09 SEP 2021 to 07 OCT 2021