

FORT WORTH, TEXAS

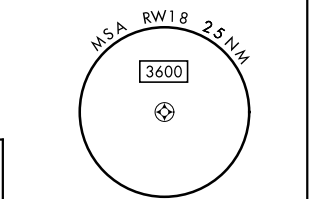
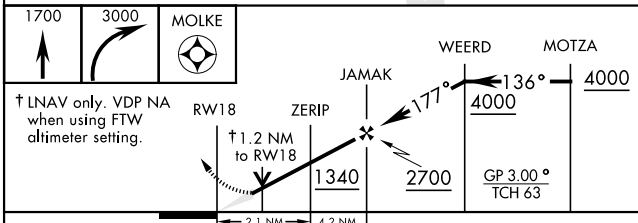
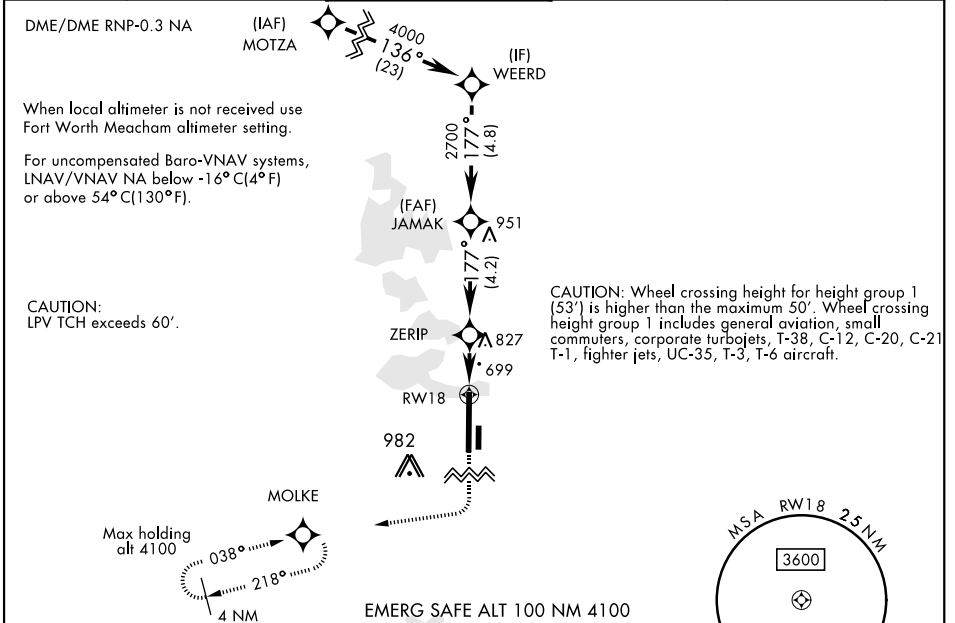
RNAV (GPS) RWY 18

WAAS CH 71215 W18A	APCH CRS 177°	Rwy Idg 11,999 TDZE 636 Arprt Elev 650	AL-160 [USN]	FORT WORTH NAS JRB (CARSWELL FLD) (KNFW)
--	-------------------------	---	--------------	--

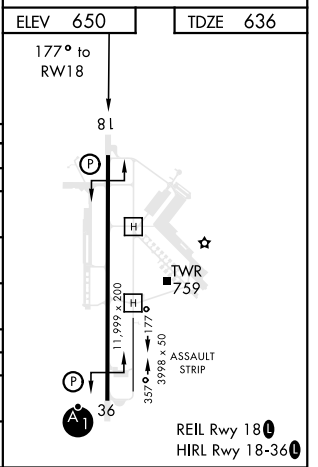
⚠ * Circling not authorized E of Rwy 18-36.
 ** Baro VNAV NA when local altimeter not received.

MISSED APPROACH: Climb to 1700, then climbing right turn to 3000 direct MOLKE and hold.

ATIS* 351.675	REGIONAL APP CON 125.8 257.95	NAVY FORT WORTH TOWER* 120.950 269.325	GND CON 121.675 279.575	CLNC DEL 126.4 254.325	ASR/PAR
-------------------------	---	--	-----------------------------------	----------------------------------	---------



CATEGORY	A	B	C	D
LPV DA	836-3/4	200	(200-3/4)	
LNAV/VNAV DA **	1043-1 1/8	407	(400-1 1/8)	
LNAV MDA	1080-1	444 (500-1)	1080-1 3/8 444 (500-1 3/8)	
C CIRCLING *	1240-1 590 (600-1)	1280-1 630 (700-1)	1320-1 3/4 670 (700-1 3/4)	1320-2 670 (700-2)
FORT WORTH MEACHAM ALTIMETER				
LPV DA	856-3/4	220	(300-3/4)	
LNAV MDA	1100-1	464 (500-1)	1100-1 1/8 464 (500-1 1/8)	
C CIRCLING *	1260-1 610 (700-1)	1300-1 650 (700-1)	1340-2 690 (700-2)	1340-2 1/4 690 (700-2 1/4)



FORT WORTH, TEXAS 32°46'N-97°26'W FORT WORTH NAS JRB (CARSWELL FLD) (KNFW)

Amdt 1 18JUN20

RNAV (GPS) RWY 18

SC-2, 09 SEP 2021 to 07 OCT 2021

SC-2, 09 SEP 2021 to 07 OCT 2021